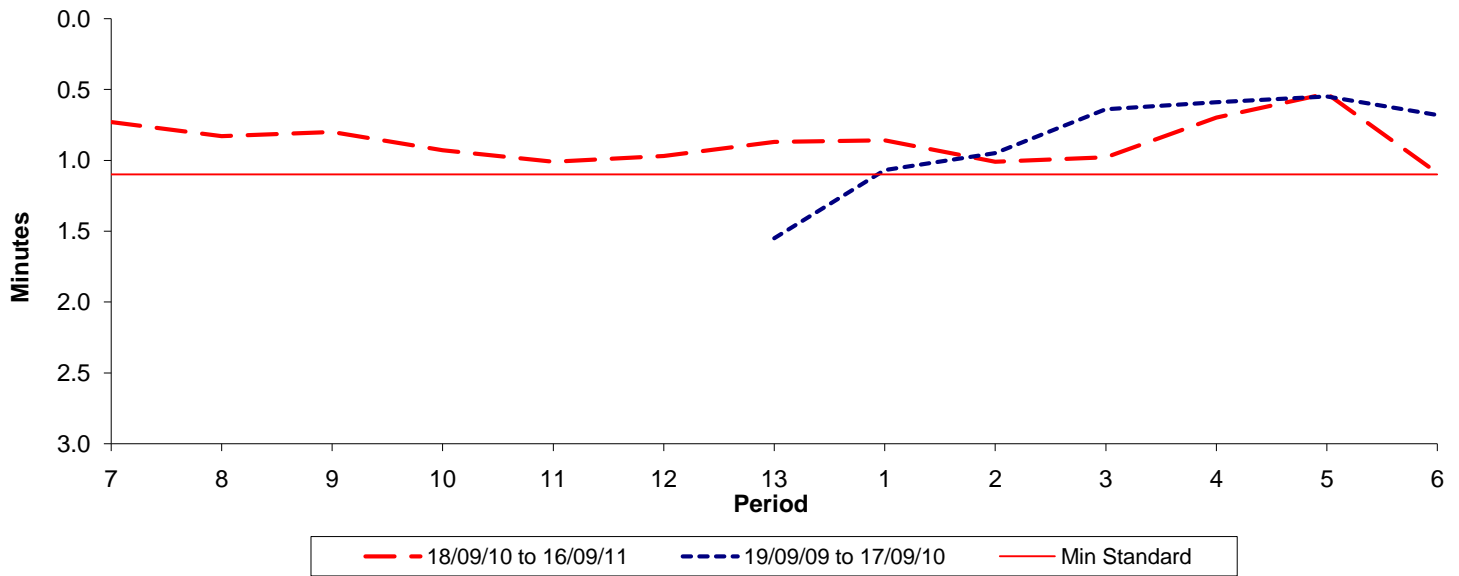




Reliability Performance (High Frequency)

Excess Waiting Time (minutes)

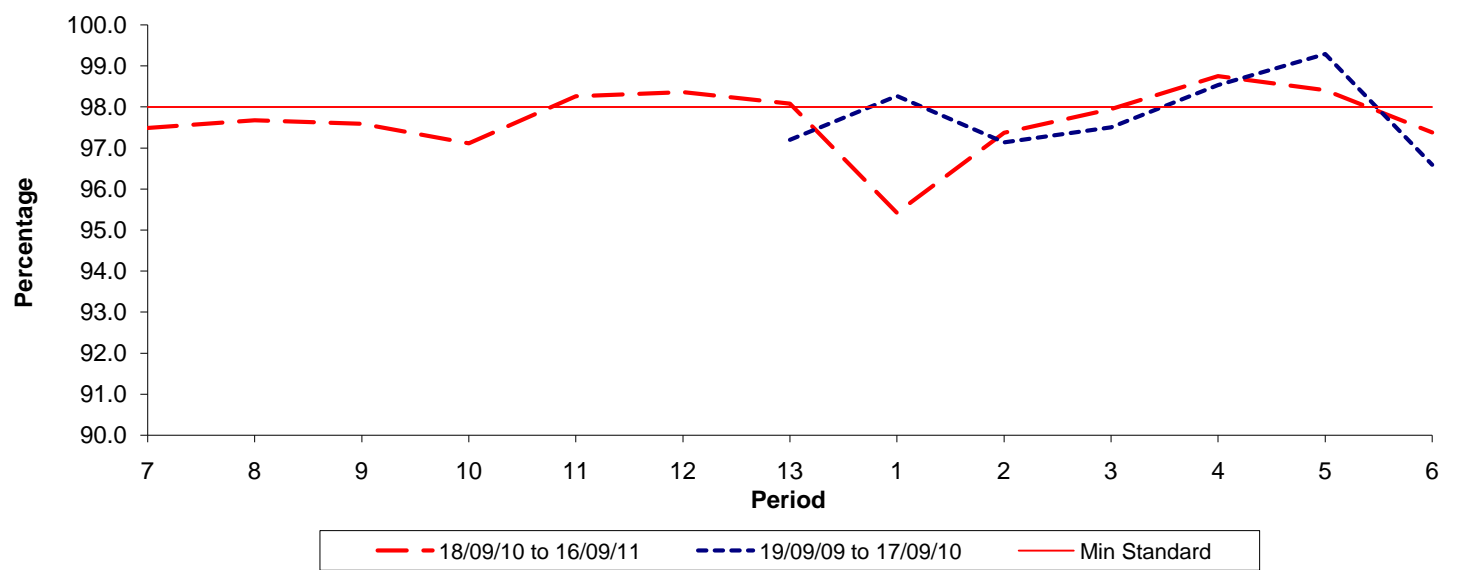


Date Range / Period	7	8	9	10	11	12	13	1	2	3	4	5	6
18/09/10 to 16/09/11	0.73	0.83	0.80	0.93	1.01	0.97	0.87	0.86	1.01	0.98	0.70	0.53	1.09
19/09/09 to 17/09/10							1.55	1.07	0.95	0.64	0.59	0.55	0.68
Min Standard	1.10	1.10	1.10	1.10	1.10	1.10	1.10	1.10	1.10	1.10	1.10	1.10	1.10

Excess Waiting Time figures are based on 12 weeks data

Kilometre Performance

% Kilometres Operated



Date Range / Period	7	8	9	10	11	12	13	1	2	3	4	5	6
18/09/10 to 16/09/11	97.48	97.67	97.59	97.11	98.26	98.36	98.08	95.42	97.37	97.95	98.75	98.41	97.38
19/09/09 to 17/09/10							97.20	98.27	97.13	97.50	98.53	99.29	96.59
Min Standard	98.00	98.00	98.00	98.00	98.00	98.00	98.00	98.00	98.00	98.00	98.00	98.00	98.00

Kilometre figures are based on 4 weeks data