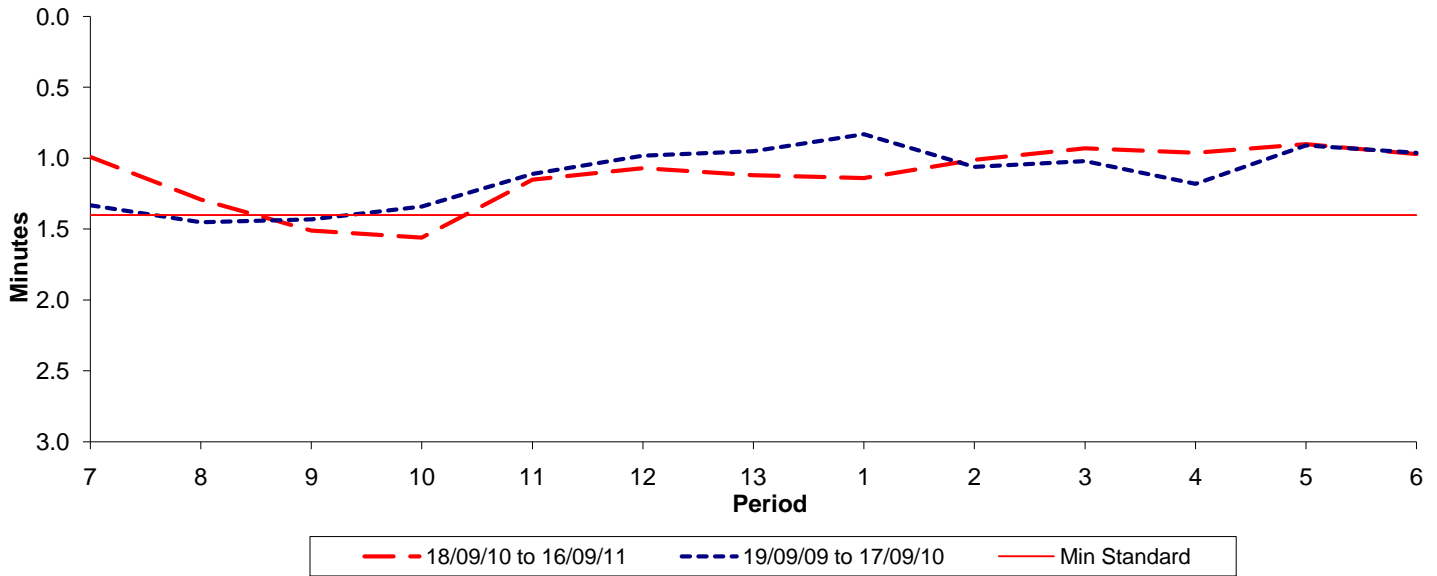




Reliability Performance (High Frequency)

Excess Waiting Time (minutes)

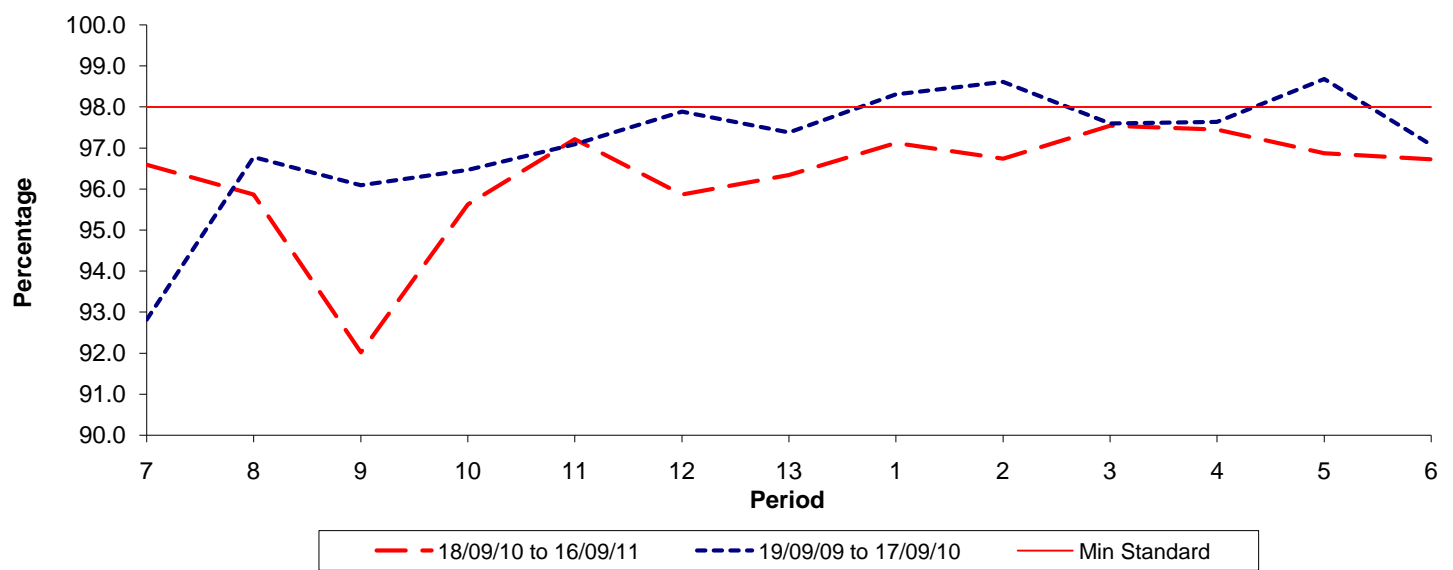


Date Range / Period	7	8	9	10	11	12	13	1	2	3	4	5	6
18/09/10 to 16/09/11	0.99	1.29	1.51	1.56	1.15	1.07	1.12	1.14	1.01	0.93	0.96	0.90	0.97
19/09/09 to 17/09/10	1.33	1.45	1.43	1.34	1.11	0.98	0.95	0.83	1.06	1.02	1.18	0.91	0.96
Min Standard	1.40	1.40	1.40	1.40	1.40	1.40	1.40	1.40	1.40	1.40	1.40	1.40	1.40

Excess Waiting Time figures are based on 12 weeks data

Kilometre Performance

% Kilometres Operated



Date Range / Period	7	8	9	10	11	12	13	1	2	3	4	5	6
18/09/10 to 16/09/11	96.59	95.87	92.02	95.62	97.21	95.86	96.34	97.12	96.74	97.54	97.45	96.87	96.72
19/09/09 to 17/09/10	92.81	96.78	96.09	96.47	97.09	97.89	97.38	98.31	98.61	97.60	97.64	98.68	97.07
Min Standard	98.00	98.00	98.00	98.00	98.00	98.00	98.00	98.00	98.00	98.00	98.00	98.00	98.00

Kilometre figures are based on 4 weeks data