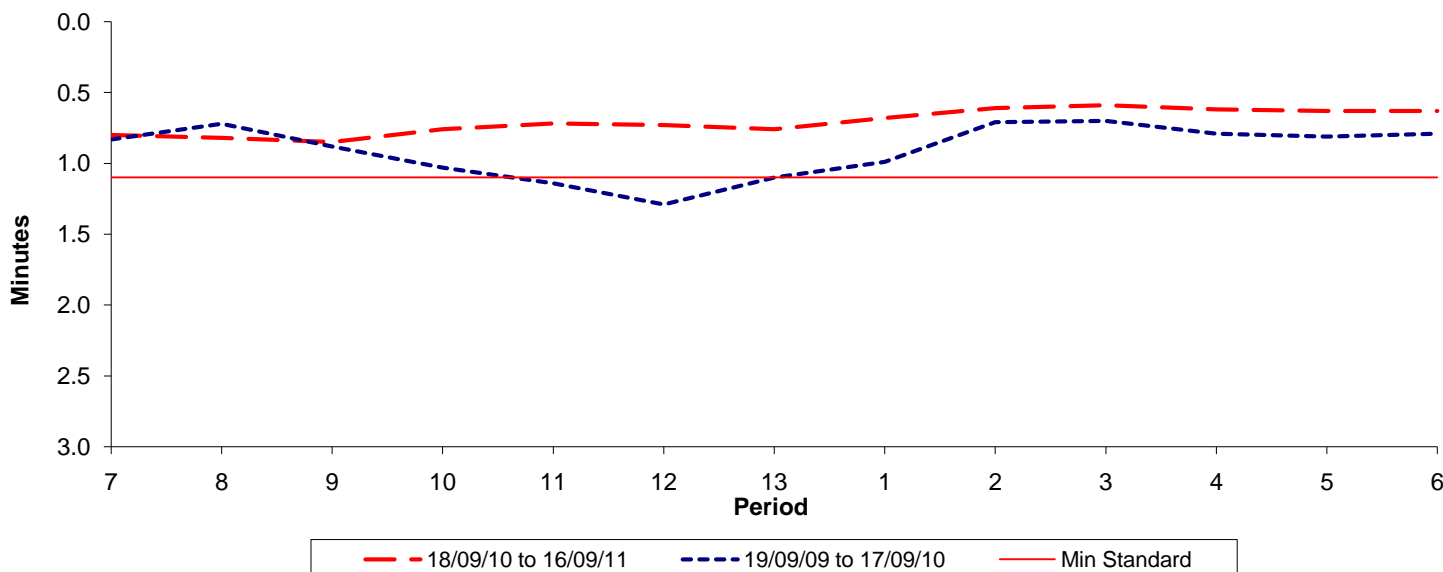




Reliability Performance (High Frequency)

Excess Waiting Time (minutes)

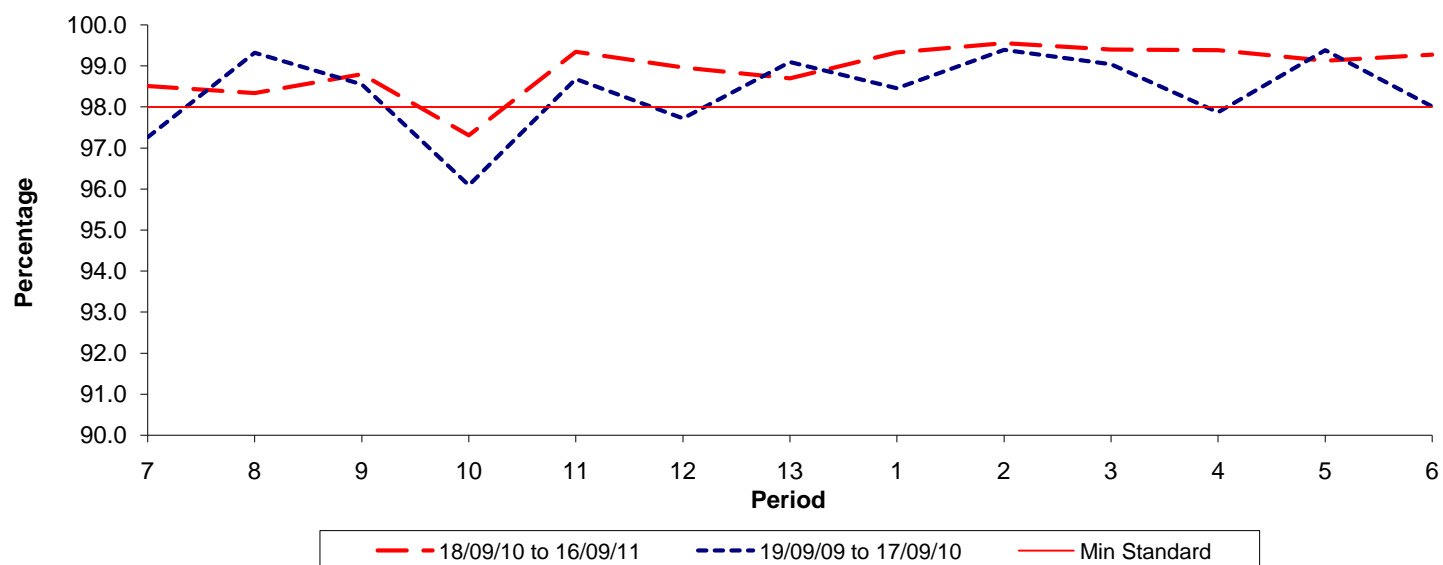


Date Range / Period	7	8	9	10	11	12	13	1	2	3	4	5	6
18/09/10 to 16/09/11	0.80	0.82	0.85	0.76	0.72	0.73	0.76	0.68	0.61	0.59	0.62	0.63	0.63
19/09/09 to 17/09/10	0.83	0.72	0.88	1.03	1.14	1.29	1.10	0.99	0.71	0.70	0.79	0.81	0.79
Min Standard	1.10	1.10	1.10	1.10	1.10	1.10	1.10	1.10	1.10	1.10	1.10	1.10	1.10

Excess Waiting Time figures are based on 12 weeks data

Kilometre Performance

% Kilometres Operated



Date Range / Period	7	8	9	10	11	12	13	1	2	3	4	5	6
18/09/10 to 16/09/11	98.51	98.34	98.80	97.31	99.35	98.97	98.70	99.33	99.56	99.40	99.39	99.13	99.28
19/09/09 to 17/09/10	97.26	99.32	98.55	96.09	98.68	97.72	99.09	98.45	99.39	99.04	97.87	99.38	98.01
Min Standard	98.00	98.00	98.00	98.00	98.00	98.00	98.00	98.00	98.00	98.00	98.00	98.00	98.00

Kilometre figures are based on 4 weeks data