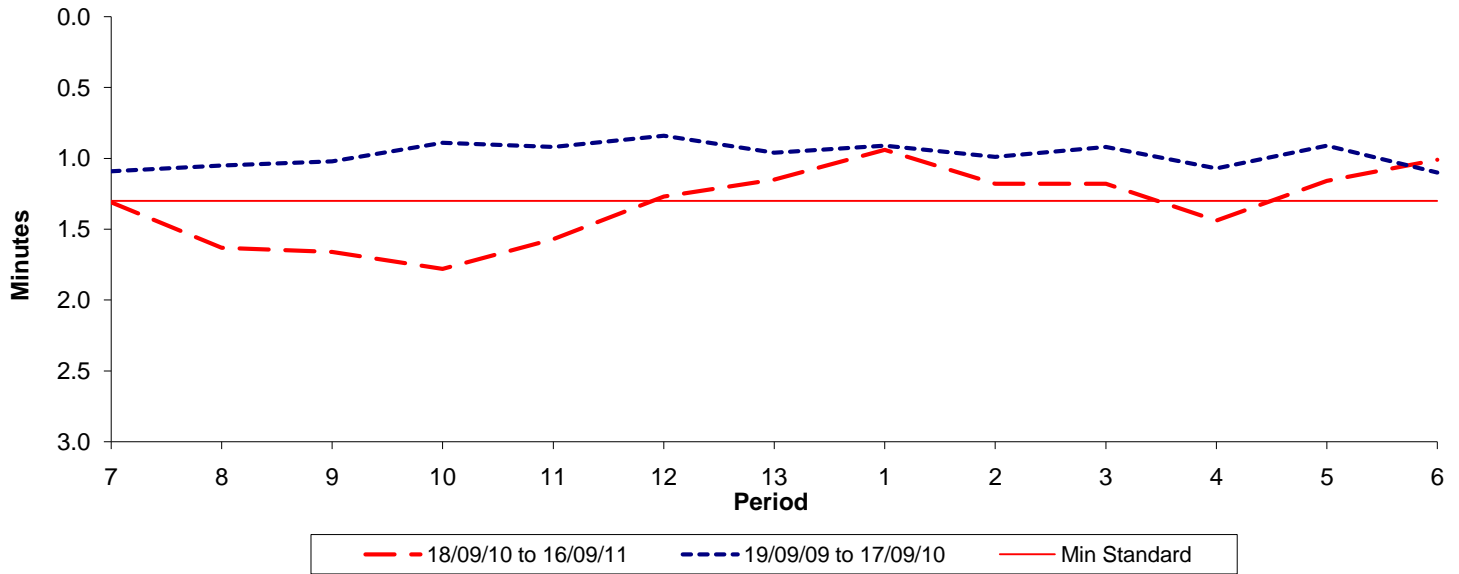




Reliability Performance (High Frequency)

Excess Waiting Time (minutes)

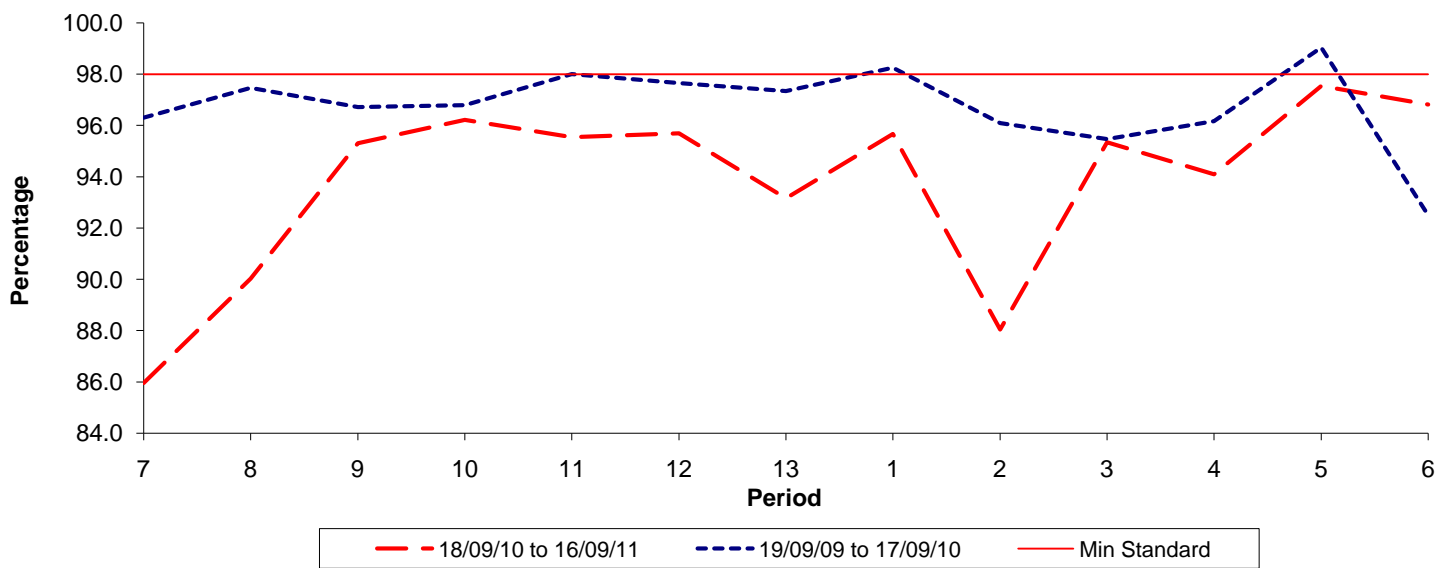


Date Range / Period	7	8	9	10	11	12	13	1	2	3	4	5	6
18/09/10 to 16/09/11	1.31	1.63	1.66	1.78	1.57	1.27	1.15	0.94	1.18	1.18	1.44	1.16	1.01
19/09/09 to 17/09/10	1.09	1.05	1.02	0.89	0.92	0.84	0.96	0.91	0.99	0.92	1.07	0.91	1.10
Min Standard	1.30	1.30	1.30	1.30	1.30	1.30	1.30	1.30	1.30	1.30	1.30	1.30	1.30

Excess Waiting Time figures are based on 12 weeks data

Kilometre Performance

% Kilometres Operated



Date Range / Period	7	8	9	10	11	12	13	1	2	3	4	5	6
18/09/10 to 16/09/11	85.95	90.02	95.31	96.21	95.54	95.69	93.16	95.67	88.04	95.34	94.09	97.54	96.82
19/09/09 to 17/09/10	96.31	97.47	96.72	96.79	98.01	97.65	97.34	98.25	96.09	95.47	96.17	99.04	92.50
Min Standard	98.00	98.00	98.00	98.00	98.00	98.00	98.00	98.00	98.00	98.00	98.00	98.00	98.00

Kilometre figures are based on 4 weeks data