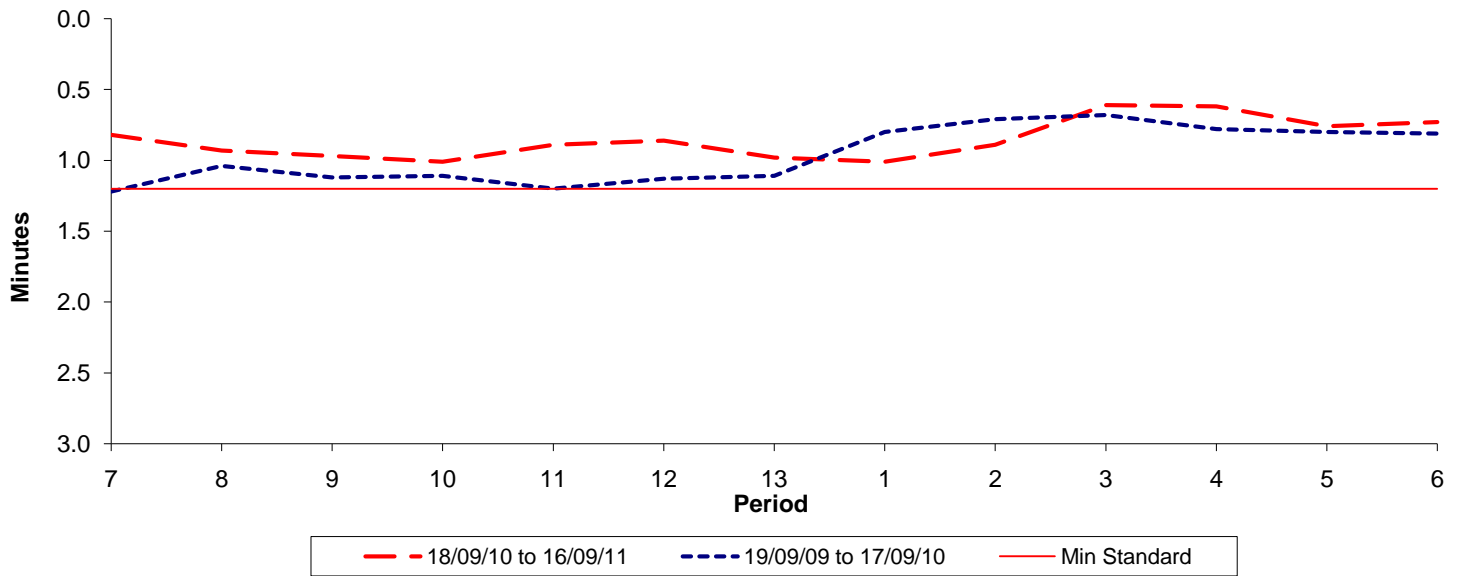




Reliability Performance (High Frequency)

Excess Waiting Time (minutes)

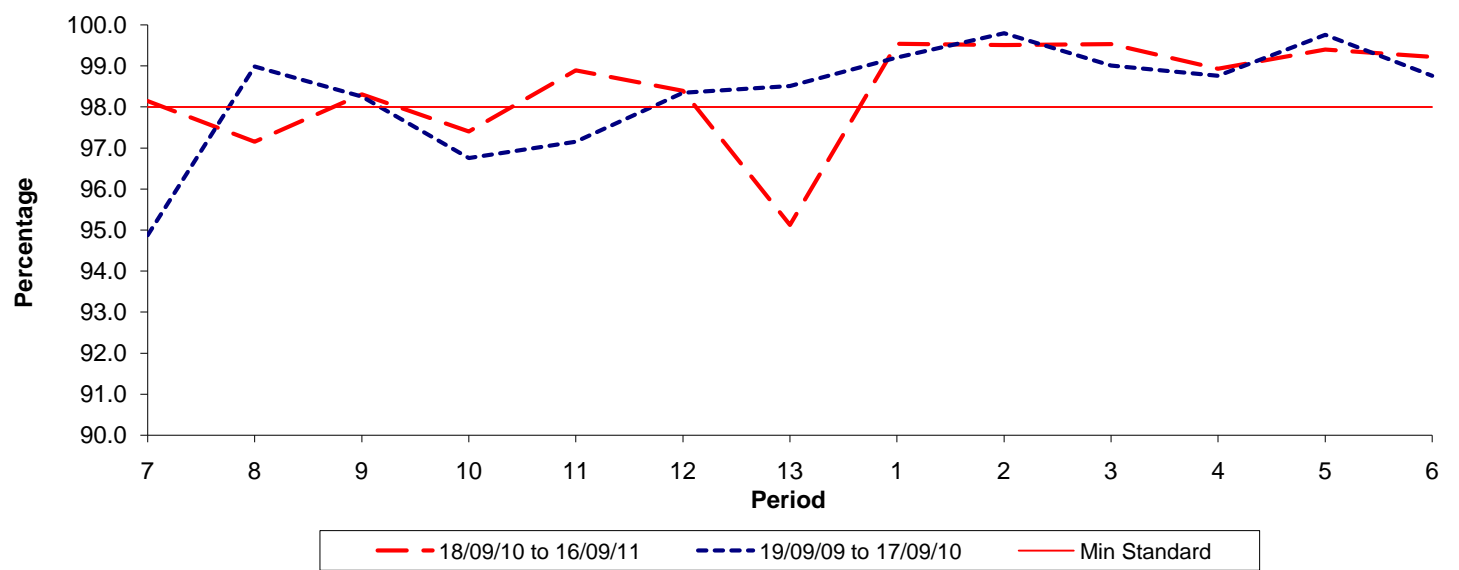


| Date Range / Period | 7 | 8 | 9 | 10 | 11 | 12 | 13 | 1 | 2 | 3 | 4 | 5 | 6 |
|----------------------|------|------|------|------|------|------|------|------|------|------|------|------|------|
| 18/09/10 to 16/09/11 | 0.82 | 0.93 | 0.97 | 1.01 | 0.89 | 0.86 | 0.98 | 1.01 | 0.89 | 0.61 | 0.62 | 0.76 | 0.73 |
| 19/09/09 to 17/09/10 | 1.22 | 1.04 | 1.12 | 1.11 | 1.20 | 1.13 | 1.11 | 0.80 | 0.71 | 0.68 | 0.78 | 0.80 | 0.81 |
| Min Standard | 1.20 | 1.20 | 1.20 | 1.20 | 1.20 | 1.20 | 1.20 | 1.20 | 1.20 | 1.20 | 1.20 | 1.20 | 1.20 |

Excess Waiting Time figures are based on 12 weeks data

Kilometre Performance

% Kilometres Operated



| Date Range / Period | 7 | 8 | 9 | 10 | 11 | 12 | 13 | 1 | 2 | 3 | 4 | 5 | 6 |
|----------------------|-------|-------|-------|-------|-------|-------|-------|-------|-------|-------|-------|-------|-------|
| 18/09/10 to 16/09/11 | 98.14 | 97.15 | 98.31 | 97.40 | 98.89 | 98.39 | 95.12 | 99.54 | 99.51 | 99.53 | 98.93 | 99.40 | 99.22 |
| 19/09/09 to 17/09/10 | 94.87 | 98.99 | 98.25 | 96.75 | 97.15 | 98.35 | 98.51 | 99.21 | 99.80 | 99.01 | 98.76 | 99.76 | 98.76 |
| Min Standard | 98.00 | 98.00 | 98.00 | 98.00 | 98.00 | 98.00 | 98.00 | 98.00 | 98.00 | 98.00 | 98.00 | 98.00 | 98.00 |

Kilometre figures are based on 4 weeks data