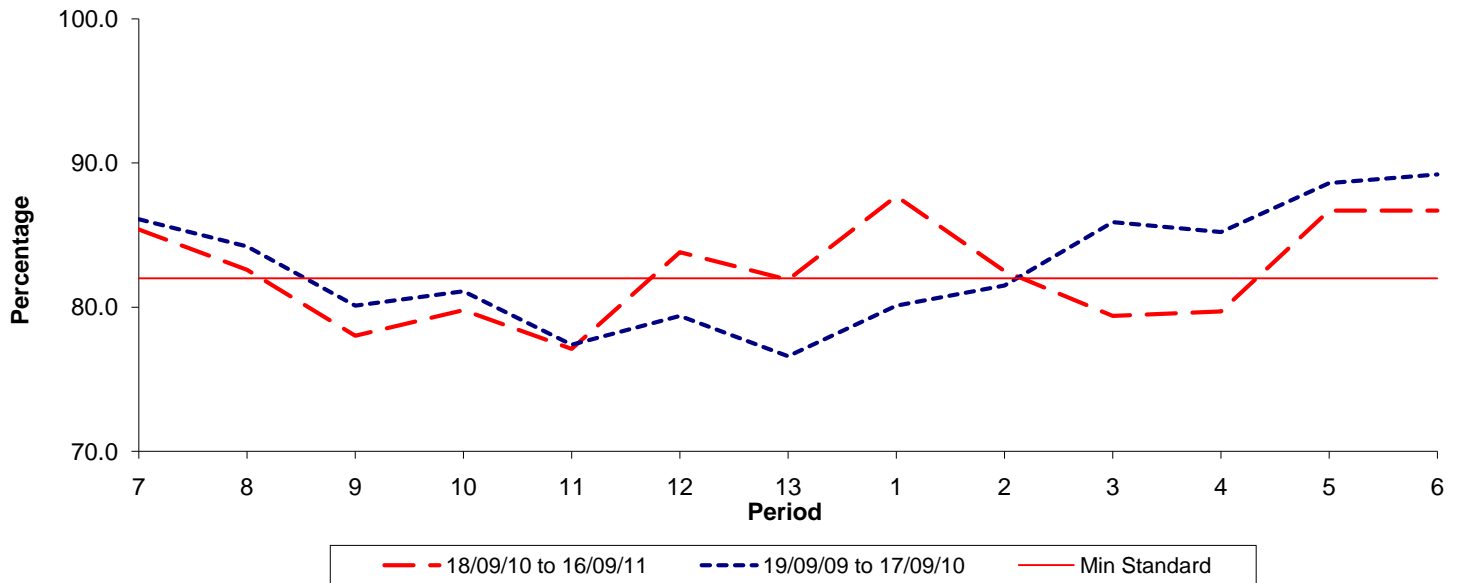




**Reliability Performance ( Low Frequency )**

**% Departing On Time**

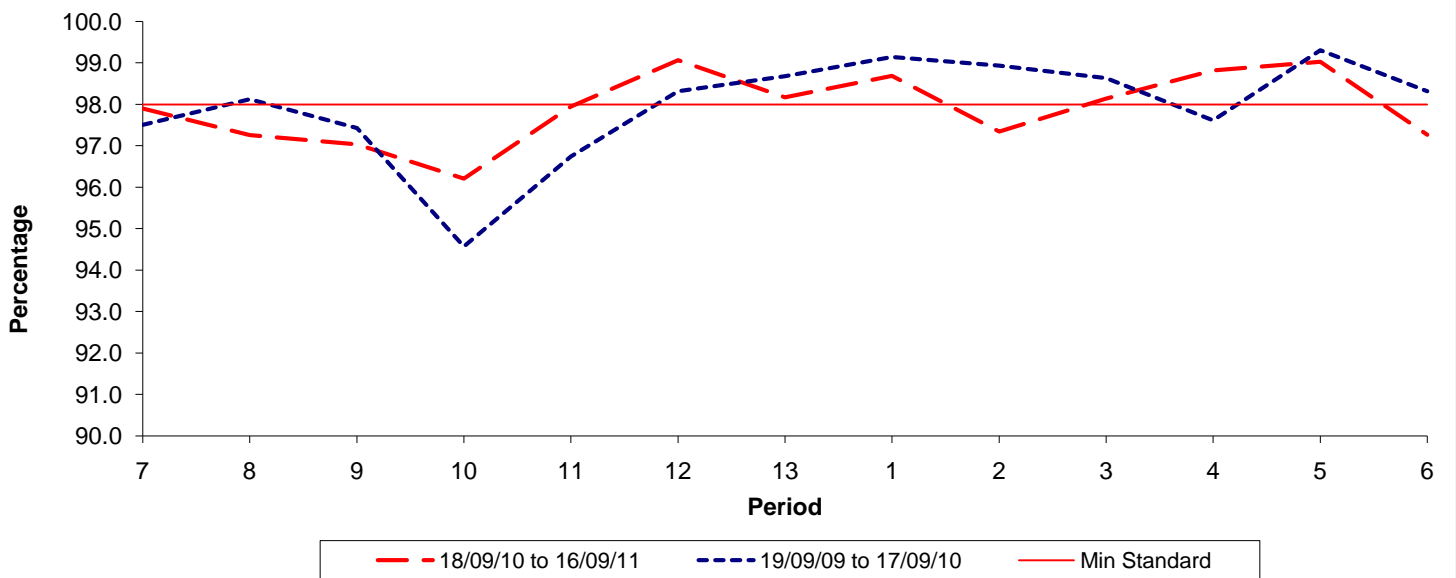


Date Range / Period	7	8	9	10	11	12	13	1	2	3	4	5	6
18/09/10 to 16/09/11	85.40	82.60	78.00	79.80	77.10	83.80	81.90	87.70	82.50	79.40	79.70	86.70	86.70
19/09/09 to 17/09/10	86.10	84.20	80.10	81.10	77.40	79.40	76.60	80.10	81.50	85.90	85.20	88.60	89.20
Min Standard	82.00	82.00	82.00	82.00	82.00	82.00	82.00	82.00	82.00	82.00	82.00	82.00	82.00

On Time figures are based on 12 weeks data

**Kilometre Performance**

**% Kilometres Operated**



Date Range / Period	7	8	9	10	11	12	13	1	2	3	4	5	6
18/09/10 to 16/09/11	97.90	97.26	97.04	96.21	97.95	99.07	98.17	98.69	97.35	98.14	98.82	99.03	97.27
19/09/09 to 17/09/10	97.51	98.13	97.43	94.57	96.74	98.32	98.68	99.15	98.94	98.64	97.62	99.31	98.32
Min Standard	98.00	98.00	98.00	98.00	98.00	98.00	98.00	98.00	98.00	98.00	98.00	98.00	98.00

Kilometre figures are based on 4 weeks data