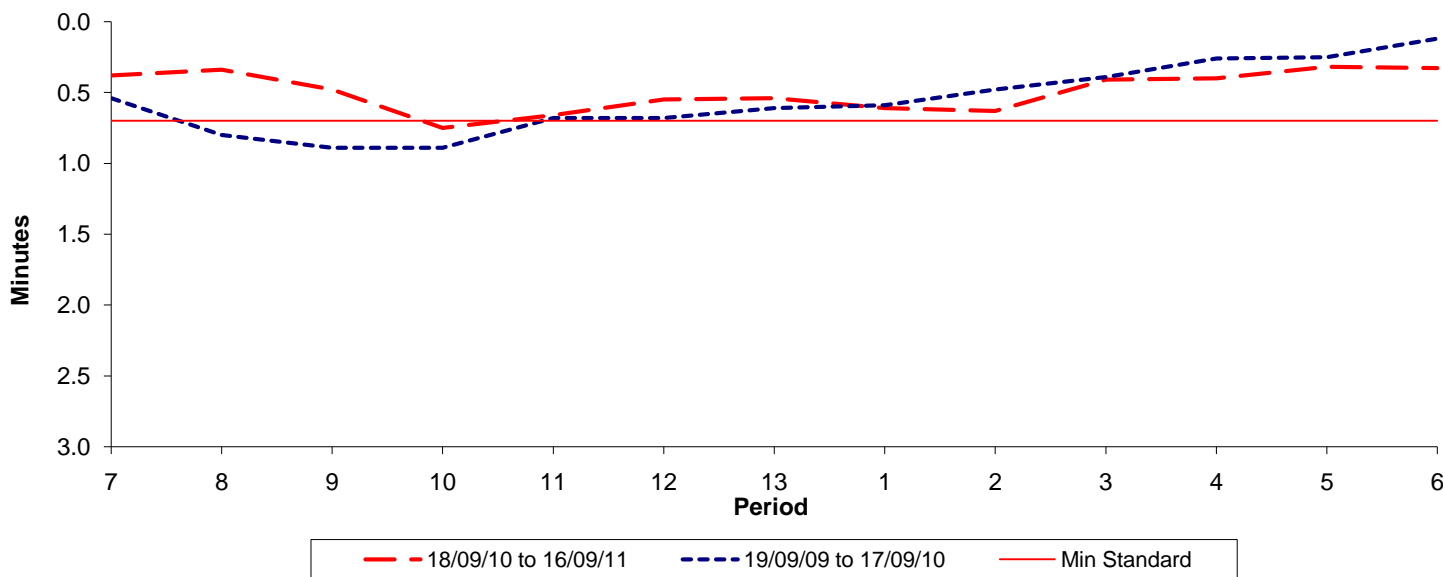




Reliability Performance (High Frequency)

Excess Waiting Time (minutes)

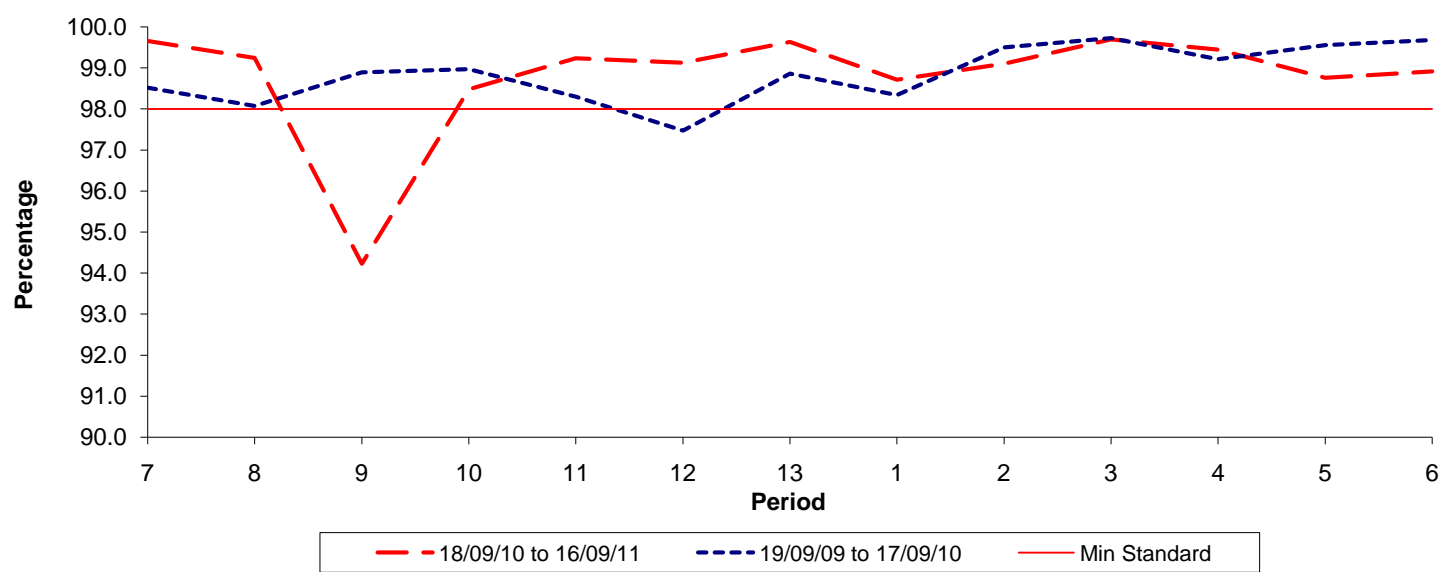


Date Range / Period	7	8	9	10	11	12	13	1	2	3	4	5	6
18/09/10 to 16/09/11	0.38	0.34	0.48	0.75	0.66	0.55	0.54	0.61	0.63	0.41	0.40	0.32	0.33
19/09/09 to 17/09/10	0.54	0.80	0.89	0.89	0.68	0.68	0.61	0.59	0.48	0.39	0.26	0.25	0.12
Min Standard	0.70	0.70	0.70	0.70	0.70	0.70	0.70	0.70	0.70	0.70	0.70	0.70	0.70

Excess Waiting Time figures are based on 12 weeks data

Kilometre Performance

% Kilometres Operated



Date Range / Period	7	8	9	10	11	12	13	1	2	3	4	5	6
18/09/10 to 16/09/11	99.66	99.25	94.23	98.48	99.24	99.13	99.64	98.72	99.11	99.70	99.45	98.76	98.92
19/09/09 to 17/09/10	98.52	98.07	98.89	98.97	98.30	97.47	98.86	98.34	99.50	99.73	99.21	99.56	99.68
Min Standard	98.00	98.00	98.00	98.00	98.00	98.00	98.00	98.00	98.00	98.00	98.00	98.00	98.00

Kilometre figures are based on 4 weeks data