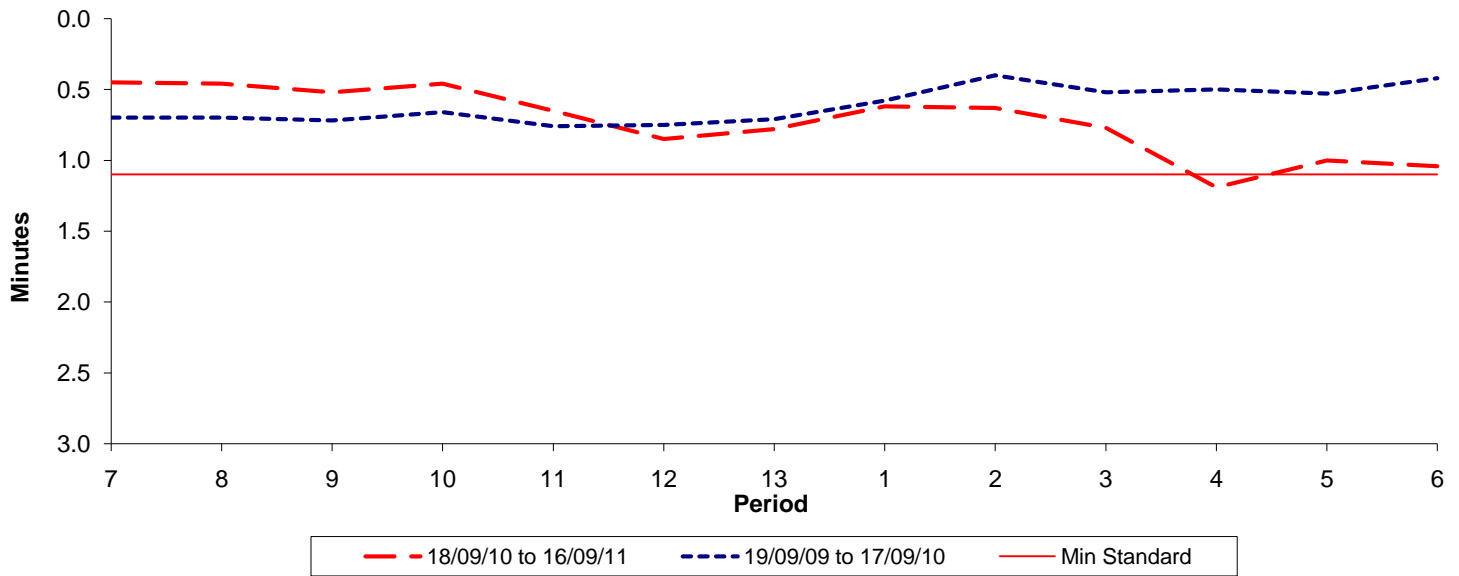




Reliability Performance (High Frequency)

Excess Waiting Time (minutes)

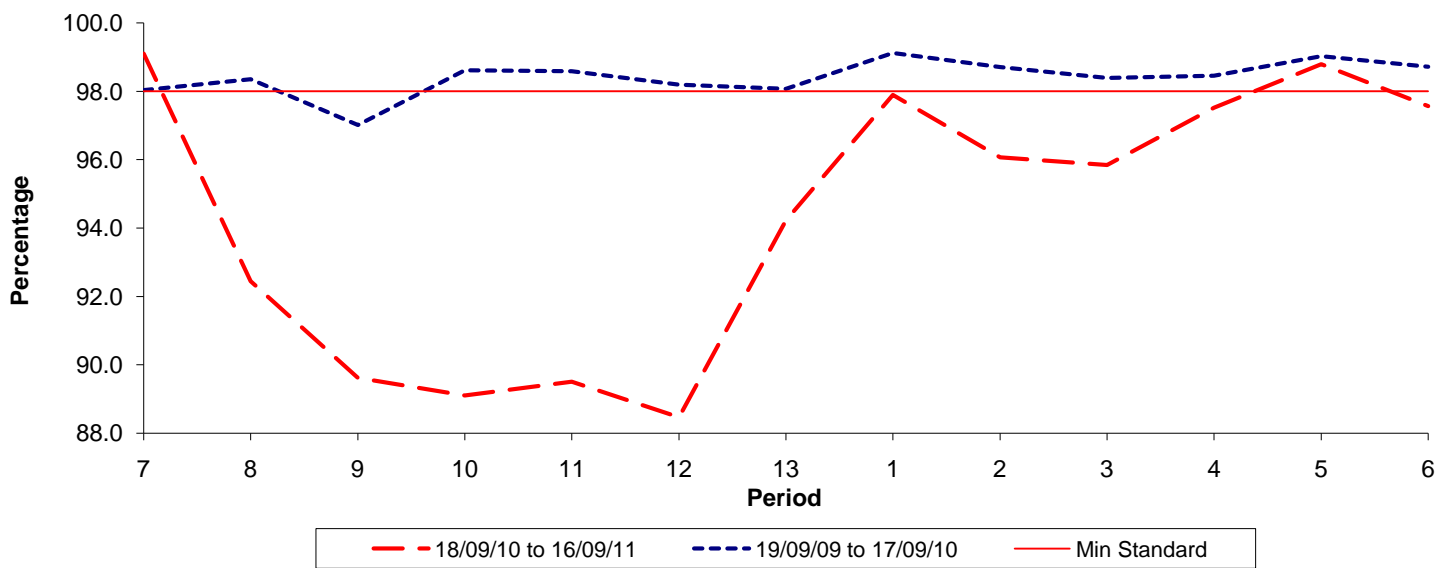


Date Range / Period	7	8	9	10	11	12	13	1	2	3	4	5	6
18/09/10 to 16/09/11	0.45	0.46	0.52	0.46	0.65	0.85	0.78	0.62	0.63	0.77	1.19	1.00	1.04
19/09/09 to 17/09/10	0.70	0.70	0.72	0.66	0.76	0.75	0.71	0.58	0.40	0.52	0.50	0.53	0.42
Min Standard	1.10	1.10	1.10	1.10	1.10	1.10	1.10	1.10	1.10	1.10	1.10	1.10	1.10

Excess Waiting Time figures are based on 12 weeks data

Kilometre Performance

% Kilometres Operated



Date Range / Period	7	8	9	10	11	12	13	1	2	3	4	5	6
18/09/10 to 16/09/11	99.10	92.45	89.62	89.11	89.50	88.47	94.22	97.89	96.07	95.84	97.52	98.79	97.56
19/09/09 to 17/09/10	98.03	98.35	97.01	98.61	98.59	98.19	98.07	99.12	98.71	98.39	98.46	99.03	98.72
Min Standard	98.00	98.00	98.00	98.00	98.00	98.00	98.00	98.00	98.00	98.00	98.00	98.00	98.00

Kilometre figures are based on 4 weeks data