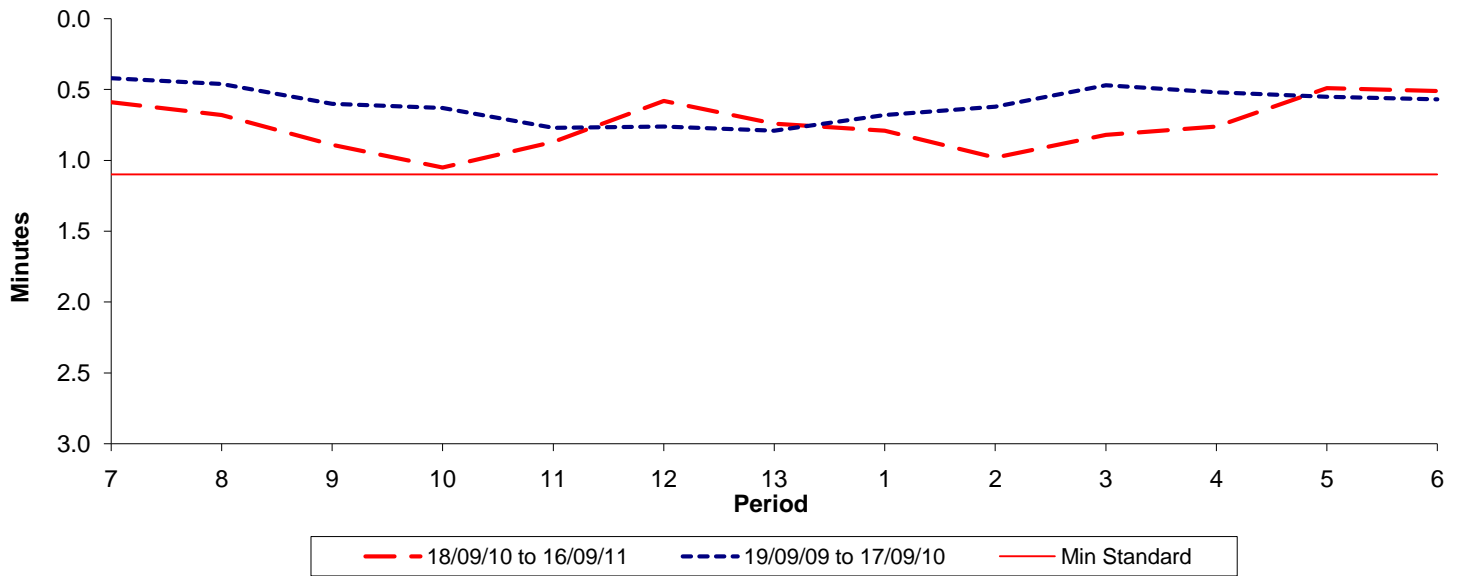




Reliability Performance (High Frequency)

Excess Waiting Time (minutes)

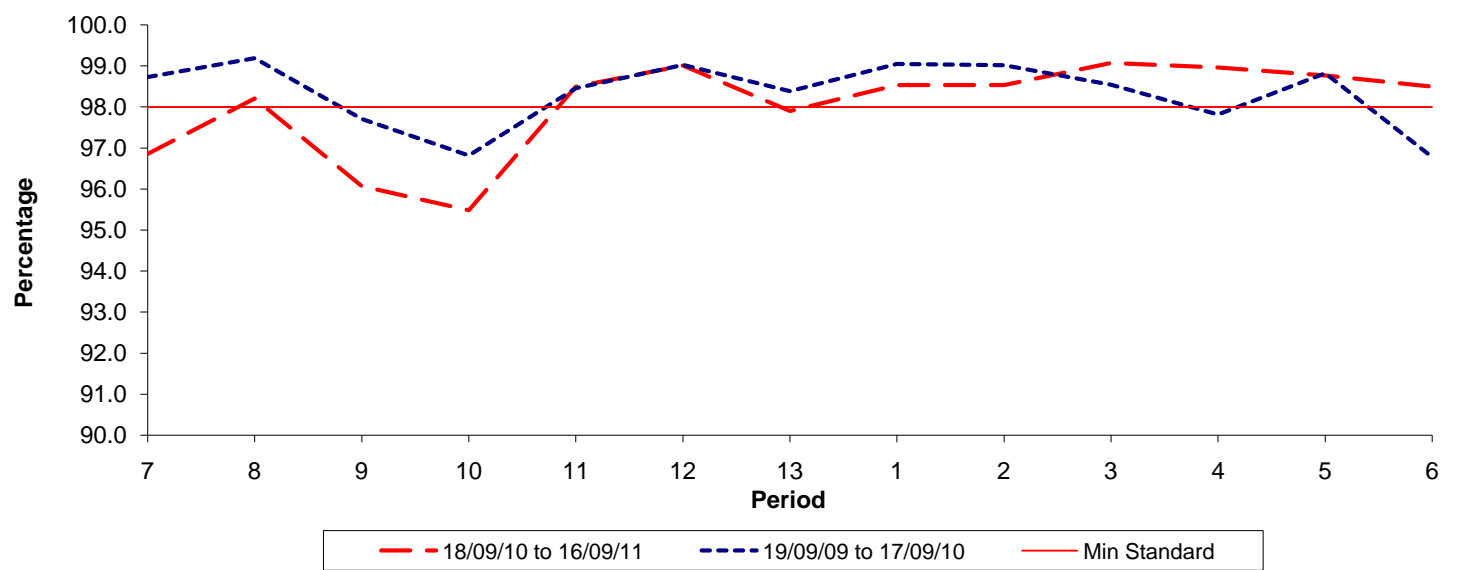


Date Range / Period	7	8	9	10	11	12	13	1	2	3	4	5	6
18/09/10 to 16/09/11	0.59	0.68	0.89	1.05	0.87	0.58	0.74	0.79	0.98	0.82	0.76	0.49	0.51
19/09/09 to 17/09/10	0.42	0.46	0.60	0.63	0.77	0.76	0.79	0.68	0.62	0.47	0.52	0.55	0.57
Min Standard	1.10	1.10	1.10	1.10	1.10	1.10	1.10	1.10	1.10	1.10	1.10	1.10	1.10

Excess Waiting Time figures are based on 12 weeks data

Kilometre Performance

% Kilometres Operated



Date Range / Period	7	8	9	10	11	12	13	1	2	3	4	5	6
18/09/10 to 16/09/11	96.86	98.20	96.07	95.49	98.49	99.01	97.90	98.53	98.53	99.07	98.96	98.77	98.49
19/09/09 to 17/09/10	98.73	99.19	97.71	96.82	98.46	99.03	98.39	99.05	99.02	98.54	97.82	98.83	96.78
Min Standard	98.00	98.00	98.00	98.00	98.00	98.00	98.00	98.00	98.00	98.00	98.00	98.00	98.00

Kilometre figures are based on 4 weeks data