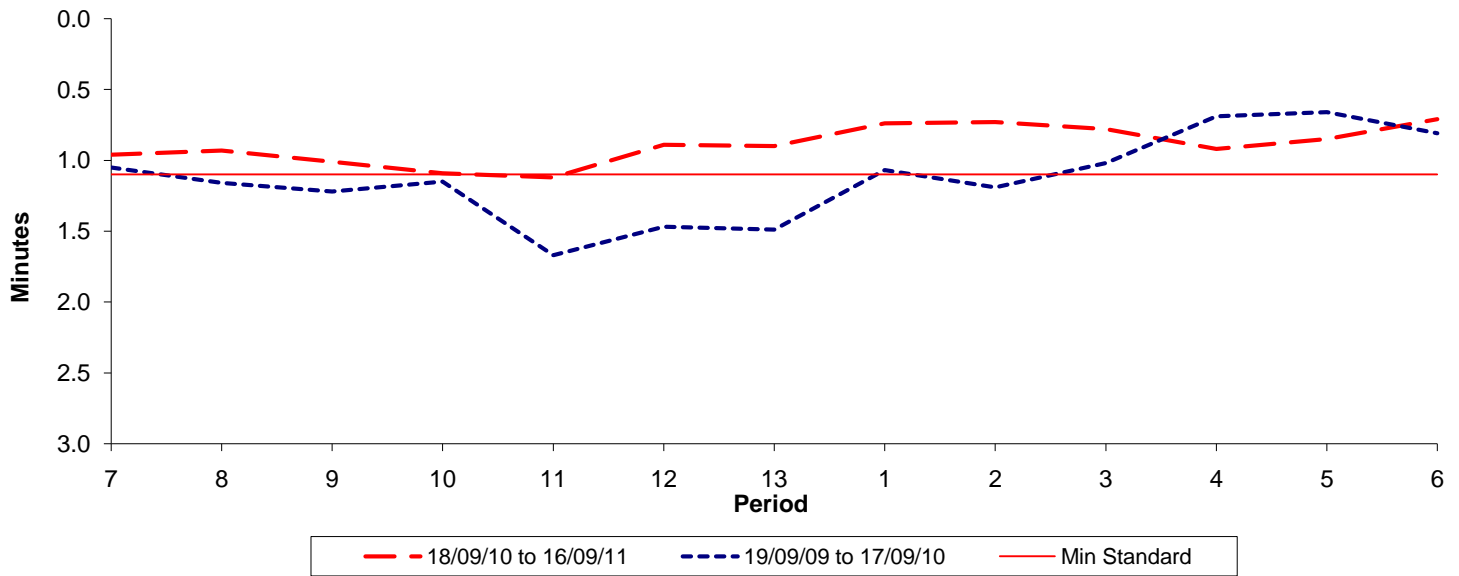




Reliability Performance (High Frequency)

Excess Waiting Time (minutes)

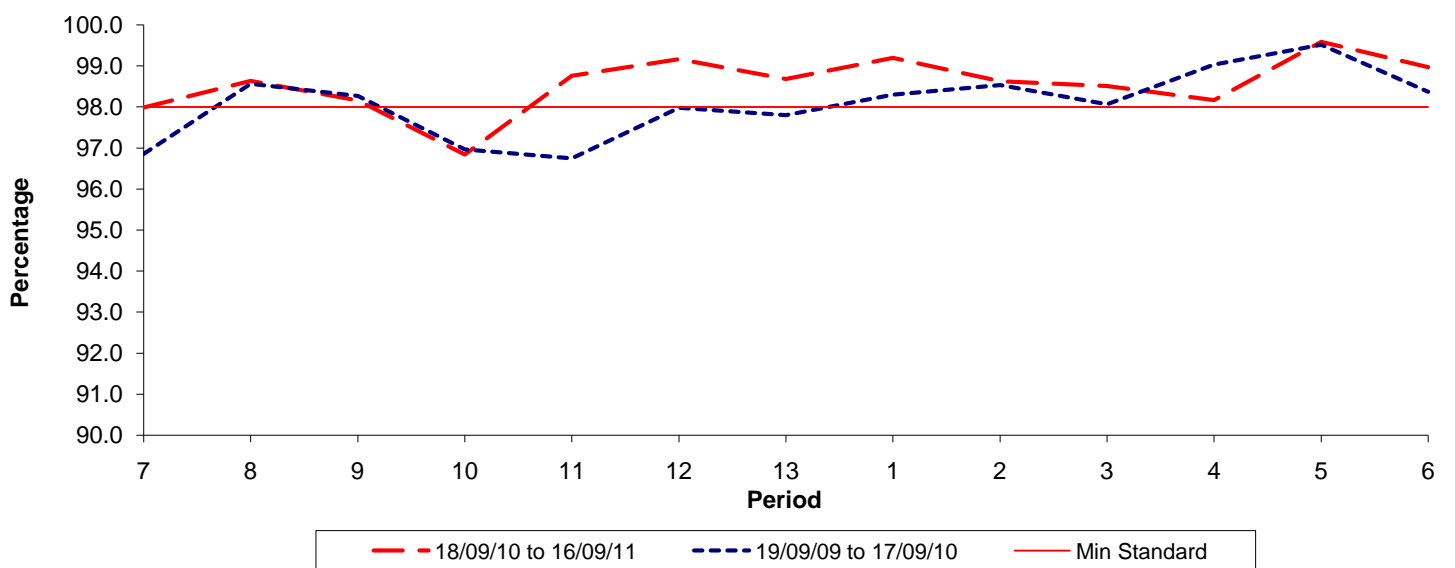


Date Range / Period	7	8	9	10	11	12	13	1	2	3	4	5	6
18/09/10 to 16/09/11	0.96	0.93	1.01	1.09	1.12	0.89	0.90	0.74	0.73	0.78	0.92	0.85	0.71
19/09/09 to 17/09/10	1.05	1.16	1.22	1.15	1.67	1.47	1.49	1.07	1.19	1.02	0.69	0.66	0.81
Min Standard	1.10	1.10	1.10	1.10	1.10	1.10	1.10	1.10	1.10	1.10	1.10	1.10	1.10

Excess Waiting Time figures are based on 12 weeks data

Kilometre Performance

% Kilometres Operated



Date Range / Period	7	8	9	10	11	12	13	1	2	3	4	5	6
18/09/10 to 16/09/11	97.99	98.64	98.16	96.84	98.76	99.17	98.68	99.20	98.63	98.51	98.17	99.59	98.97
19/09/09 to 17/09/10	96.86	98.57	98.27	96.97	96.75	97.98	97.80	98.30	98.54	98.07	99.04	99.52	98.37
Min Standard	98.00	98.00	98.00	98.00	98.00	98.00	98.00	98.00	98.00	98.00	98.00	98.00	98.00

Kilometre figures are based on 4 weeks data