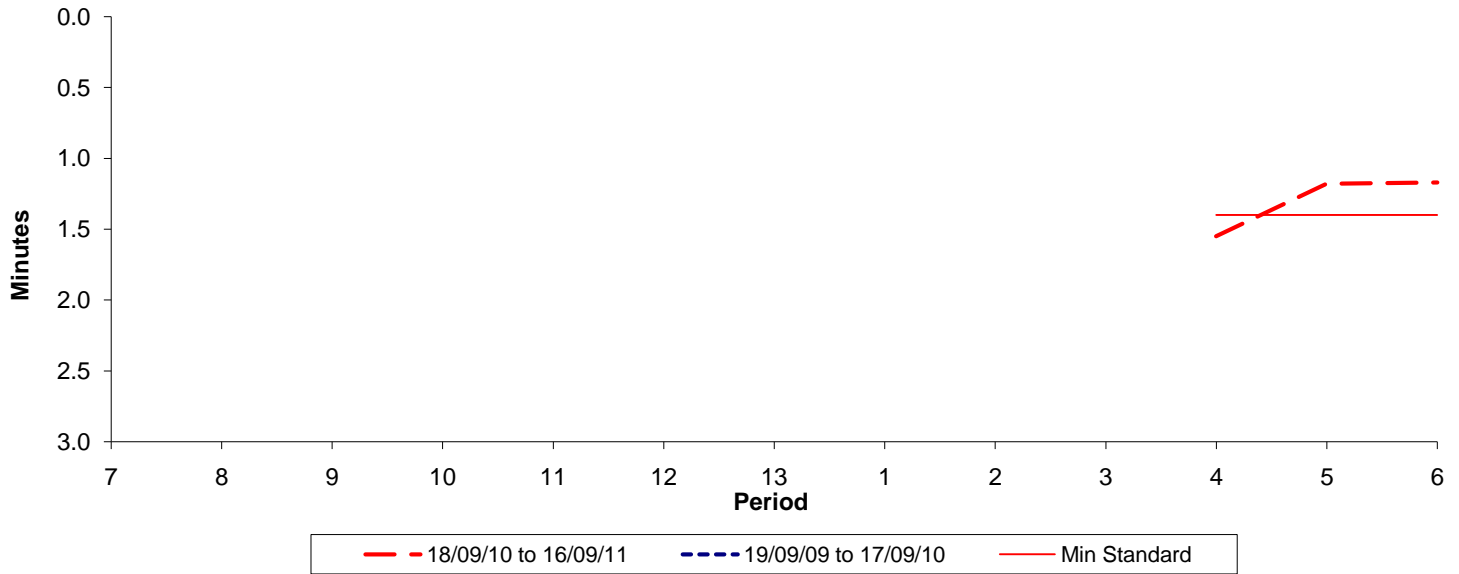




Reliability Performance (High Frequency)

Excess Waiting Time (minutes)

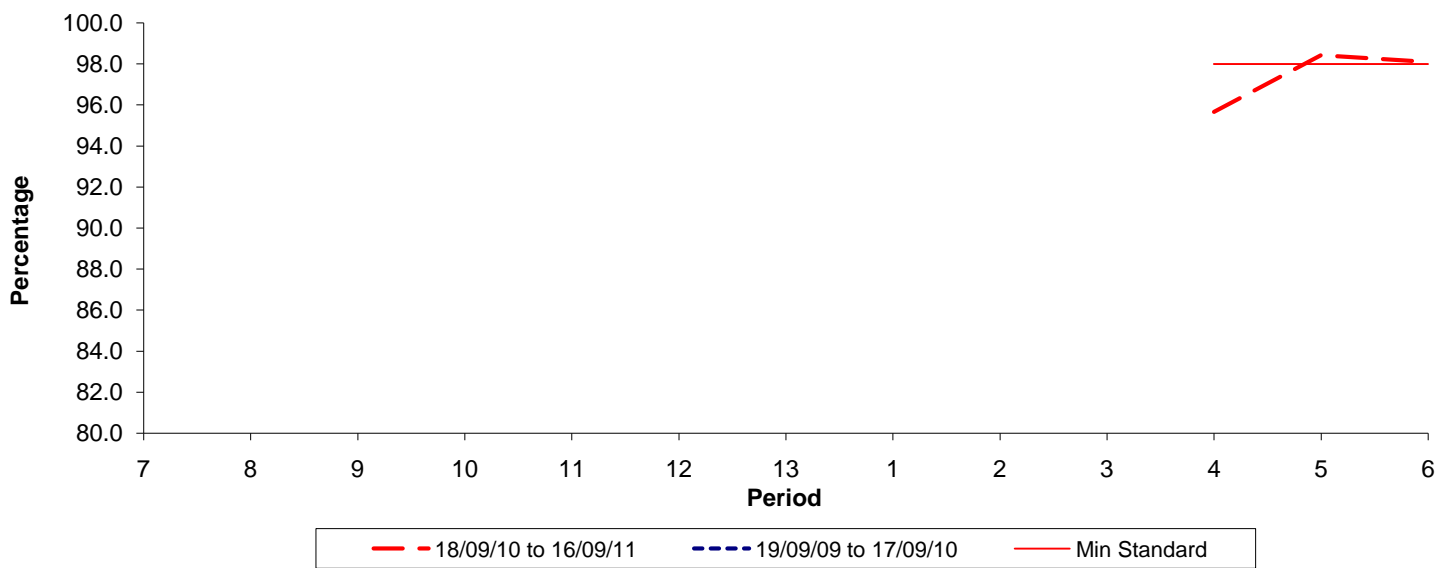


Date Range / Period	7	8	9	10	11	12	13	1	2	3	4	5	6
18/09/10 to 16/09/11											1.55	1.18	1.17
19/09/09 to 17/09/10													
Min Standard											1.40	1.40	1.40

Excess Waiting Time figures are based on 12 weeks data

Kilometre Performance

% Kilometres Operated



Date Range / Period	7	8	9	10	11	12	13	1	2	3	4	5	6
18/09/10 to 16/09/11											95.66	98.43	98.10
19/09/09 to 17/09/10													
Min Standard											98.00	98.00	98.00

Kilometre figures are based on 4 weeks data