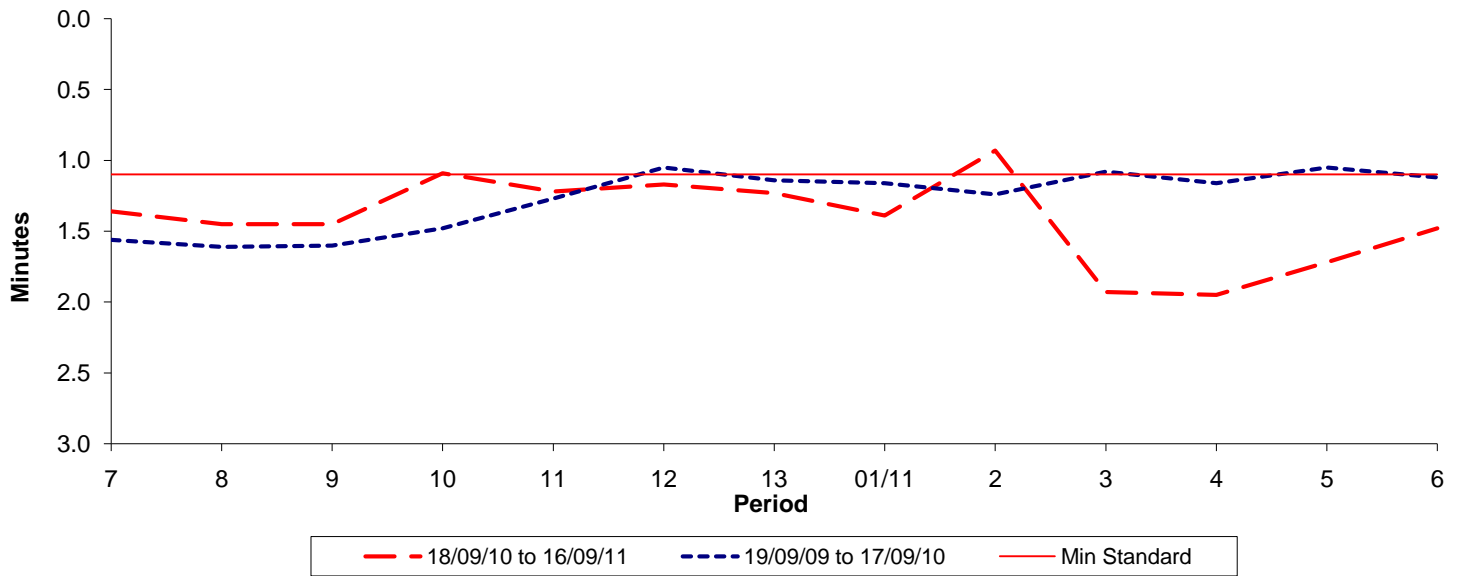




Reliability Performance (High Frequency)

Excess Waiting Time (minutes)

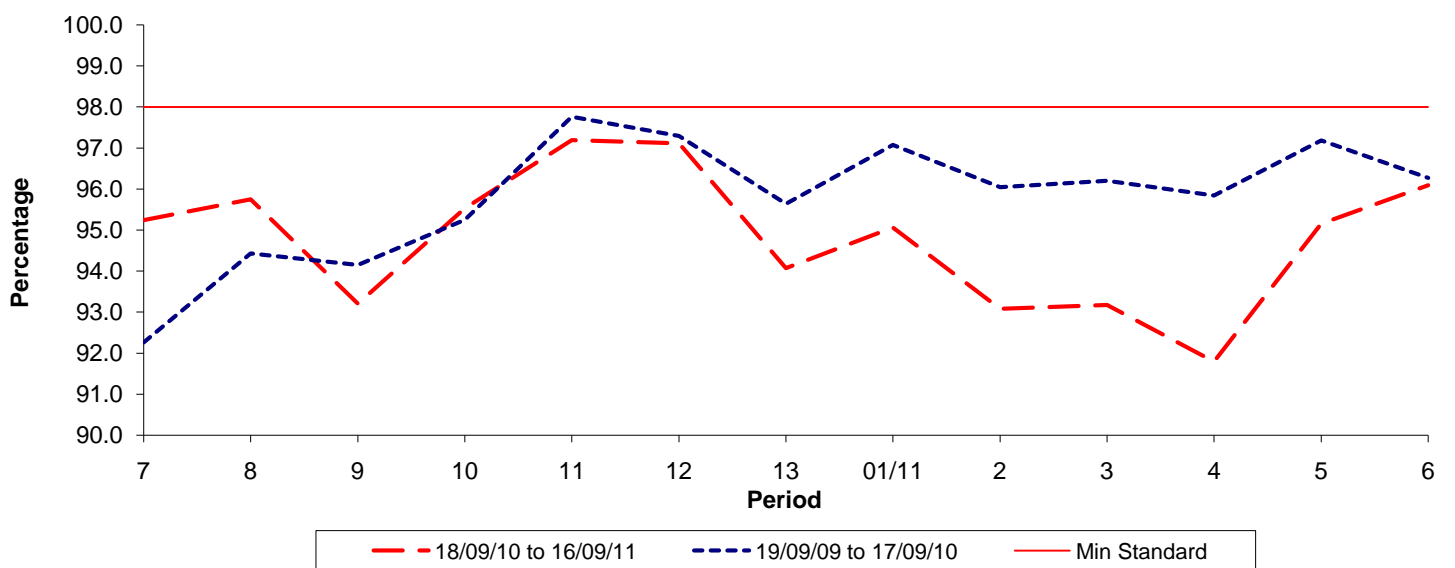


Date Range / Period	7	8	9	10	11	12	13	01/11	2	3	4	5	6
18/09/10 to 16/09/11	1.36	1.45	1.45	1.09	1.22	1.17	1.23	1.39	0.93	1.93	1.95	1.72	1.48
19/09/09 to 17/09/10	1.56	1.61	1.60	1.48	1.27	1.05	1.14	1.16	1.24	1.08	1.16	1.05	1.12
Min Standard	1.10	1.10	1.10	1.10	1.10	1.10	1.10	1.10	1.10	1.10	1.10	1.10	1.10

Excess Waiting Time figures are based on 12 weeks data

Kilometre Performance

% Kilometres Operated



Date Range / Period	7	8	9	10	11	12	13	01/11	2	3	4	5	6
18/09/10 to 16/09/11	95.24	95.75	93.20	95.53	97.19	97.11	94.07	95.06	93.08	93.17	91.79	95.15	96.09
19/09/09 to 17/09/10	92.26	94.43	94.15	95.25	97.76	97.29	95.64	97.07	96.04	96.20	95.84	97.18	96.27
Min Standard	98.00	98.00	98.00	98.00	98.00	98.00	98.00	98.00	98.00	98.00	98.00	98.00	98.00

Kilometre figures are based on 4 weeks data