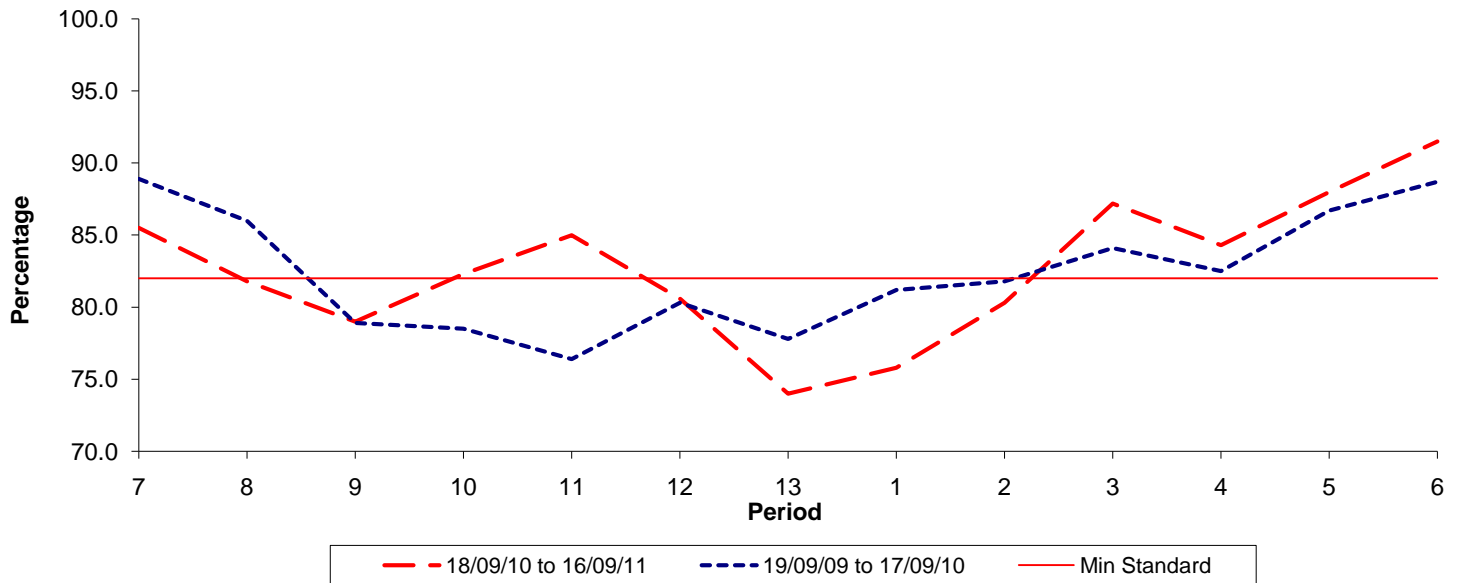




**Reliability Performance ( Low Frequency )**

**% Departing On Time**

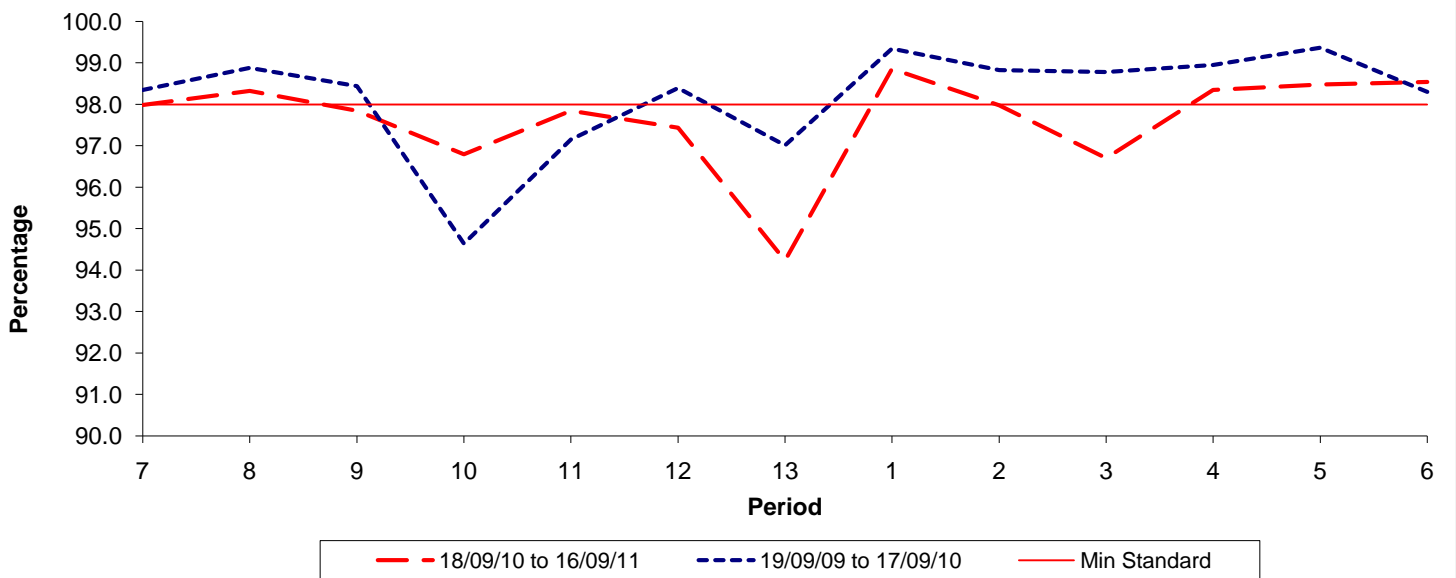


Date Range / Period	7	8	9	10	11	12	13	1	2	3	4	5	6
18/09/10 to 16/09/11	85.50	81.80	79.00	82.30	85.00	80.60	74.00	75.80	80.30	87.20	84.30	88.00	91.50
19/09/09 to 17/09/10	88.90	86.00	78.90	78.50	76.40	80.30	77.80	81.20	81.80	84.10	82.50	86.70	88.70
Min Standard	82.00	82.00	82.00	82.00	82.00	82.00	82.00	82.00	82.00	82.00	82.00	82.00	82.00

On Time figures are based on 12 weeks data

**Kilometre Performance**

**% Kilometres Operated**



Date Range / Period	7	8	9	10	11	12	13	1	2	3	4	5	6
18/09/10 to 16/09/11	97.99	98.33	97.85	96.80	97.85	97.44	94.23	98.86	97.98	96.70	98.35	98.48	98.54
19/09/09 to 17/09/10	98.35	98.88	98.44	94.64	97.15	98.40	97.01	99.35	98.83	98.78	98.95	99.37	98.30
Min Standard	98.00	98.00	98.00	98.00	98.00	98.00	98.00	98.00	98.00	98.00	98.00	98.00	98.00

Kilometre figures are based on 4 weeks data