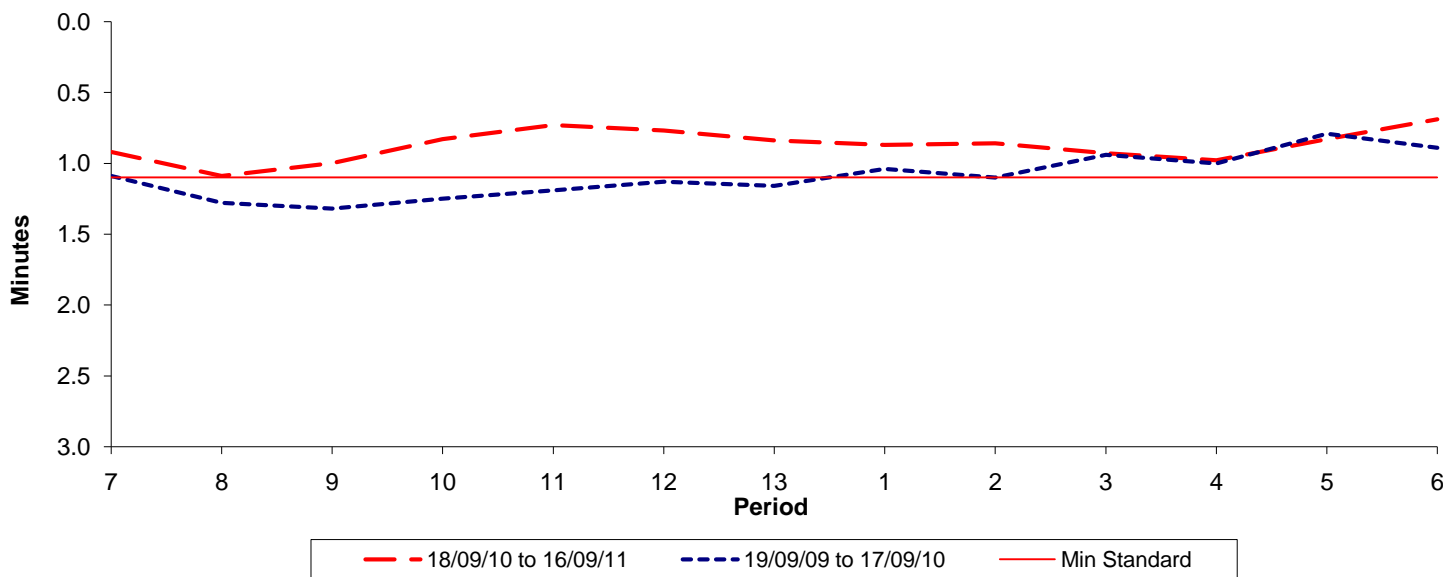




Reliability Performance (High Frequency)

Excess Waiting Time (minutes)

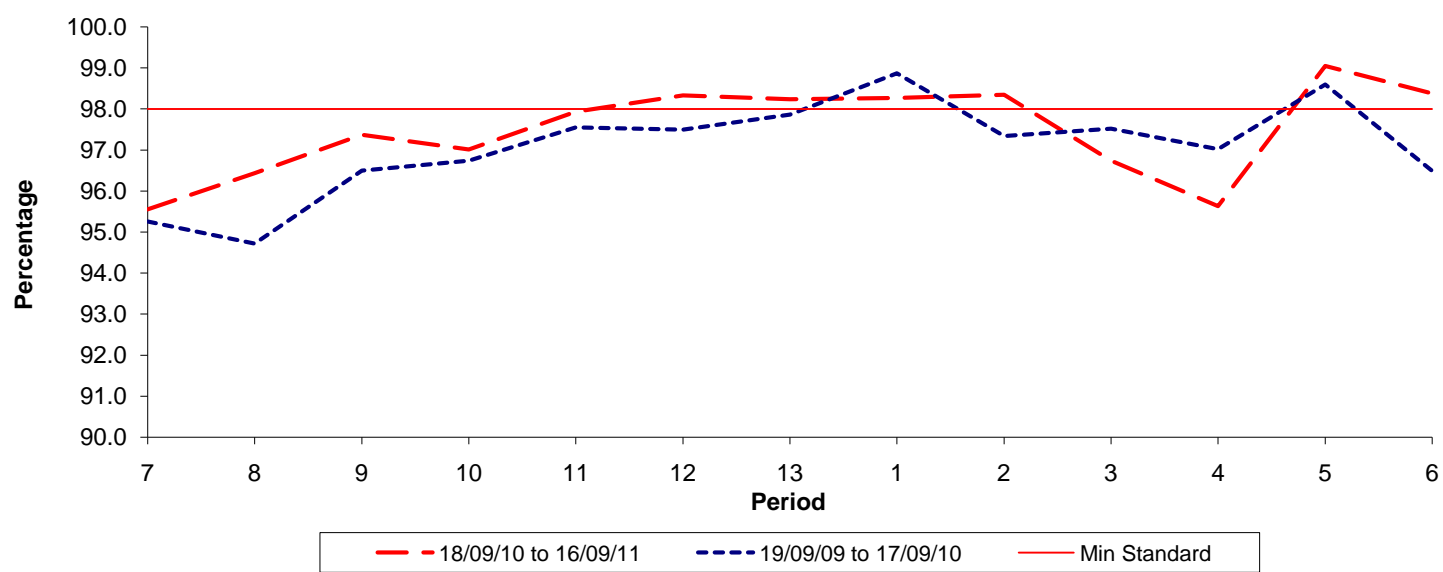


Date Range / Period	7	8	9	10	11	12	13	1	2	3	4	5	6
18/09/10 to 16/09/11	0.92	1.09	1.00	0.83	0.73	0.77	0.84	0.87	0.86	0.93	0.98	0.83	0.69
19/09/09 to 17/09/10	1.09	1.28	1.32	1.25	1.19	1.13	1.16	1.04	1.10	0.94	1.00	0.79	0.89
Min Standard	1.10	1.10	1.10	1.10	1.10	1.10	1.10	1.10	1.10	1.10	1.10	1.10	1.10

Excess Waiting Time figures are based on 12 weeks data

Kilometre Performance

% Kilometres Operated



Date Range / Period	7	8	9	10	11	12	13	1	2	3	4	5	6
18/09/10 to 16/09/11	95.55	96.43	97.37	97.01	97.93	98.33	98.24	98.27	98.35	96.74	95.63	99.05	98.38
19/09/09 to 17/09/10	95.26	94.72	96.50	96.74	97.55	97.50	97.86	98.87	97.34	97.52	97.02	98.60	96.49
Min Standard	98.00	98.00	98.00	98.00	98.00	98.00	98.00	98.00	98.00	98.00	98.00	98.00	98.00

Kilometre figures are based on 4 weeks data