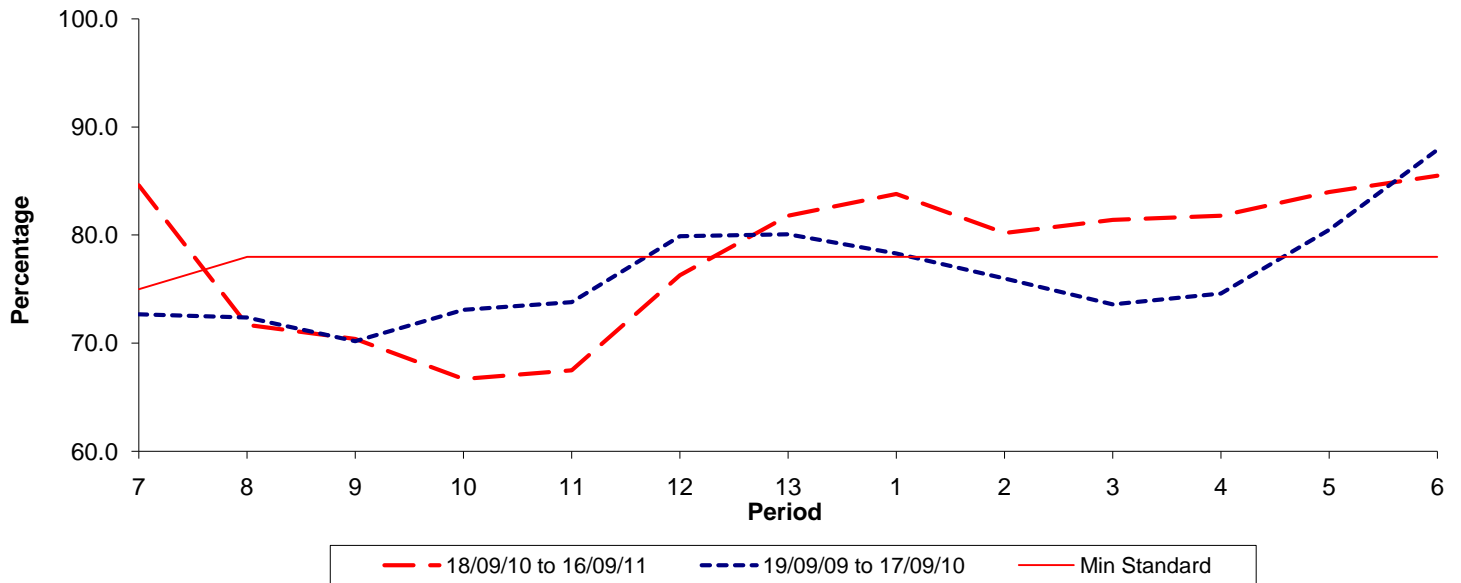




**Reliability Performance ( Low Frequency )**

**% Departing On Time**

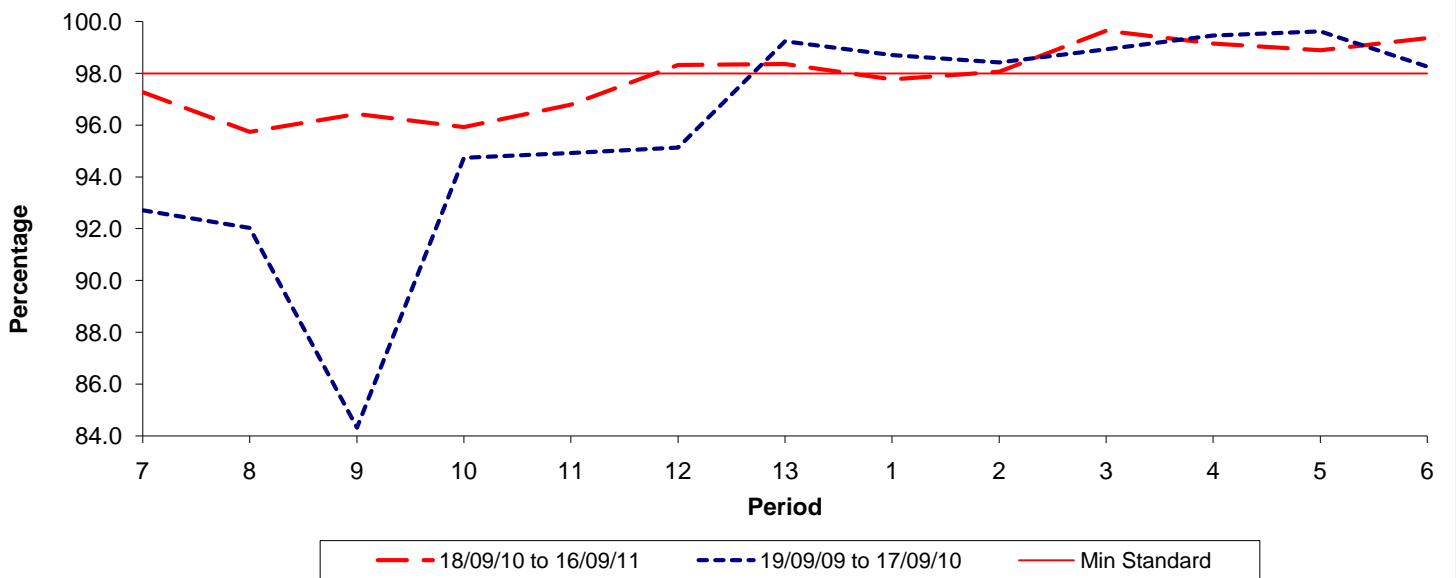


Date Range / Period	7	8	9	10	11	12	13	1	2	3	4	5	6
18/09/10 to 16/09/11	84.60	71.70	70.40	66.70	67.50	76.30	81.80	83.80	80.20	81.40	81.80	84.00	85.50
19/09/09 to 17/09/10	72.70	72.40	70.20	73.10	73.80	79.90	80.10	78.30	76.00	73.60	74.60	80.50	87.90
Min Standard	75.00	78.00	78.00	78.00	78.00	78.00	78.00	78.00	78.00	78.00	78.00	78.00	78.00

On Time figures are based on 12 weeks data

**Kilometre Performance**

**% Kilometres Operated**



Date Range / Period	7	8	9	10	11	12	13	1	2	3	4	5	6
18/09/10 to 16/09/11	97.28	95.74	96.43	95.92	96.79	98.32	98.36	97.77	98.07	99.65	99.15	98.89	99.36
19/09/09 to 17/09/10	92.71	92.03	84.31	94.74	94.92	95.13	99.24	98.71	98.42	98.93	99.46	99.62	98.26
Min Standard	98.00	98.00	98.00	98.00	98.00	98.00	98.00	98.00	98.00	98.00	98.00	98.00	98.00

Kilometre figures are based on 4 weeks data