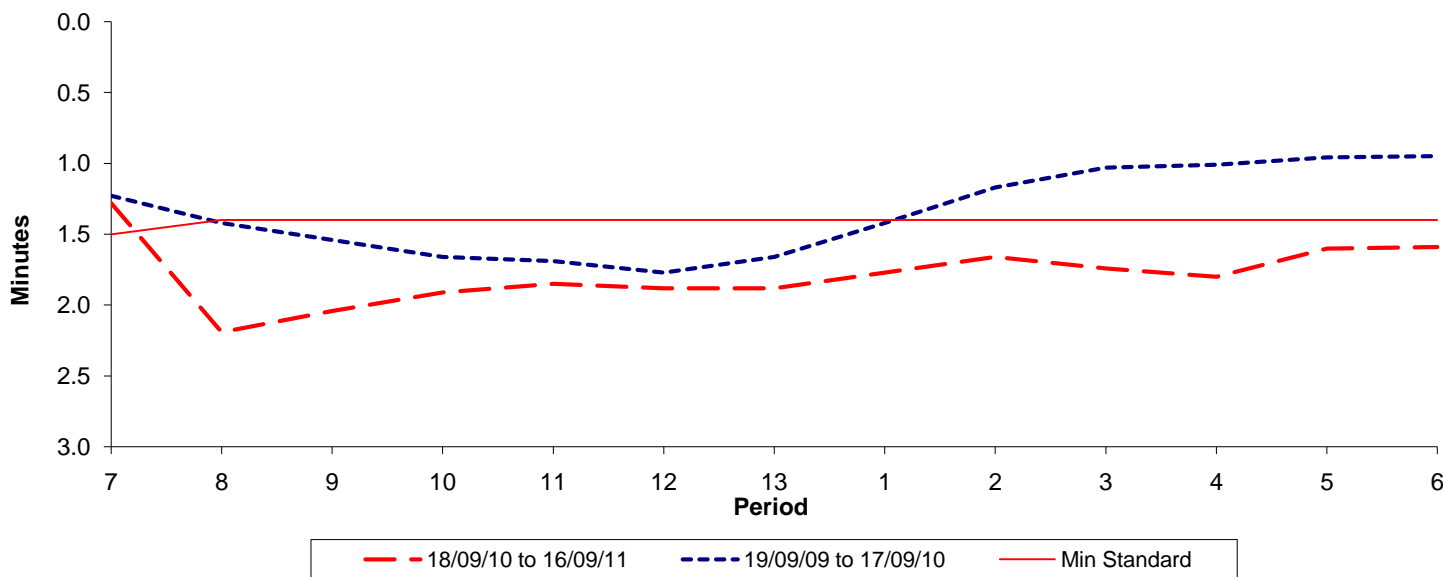




Reliability Performance (High Frequency)

Excess Waiting Time (minutes)

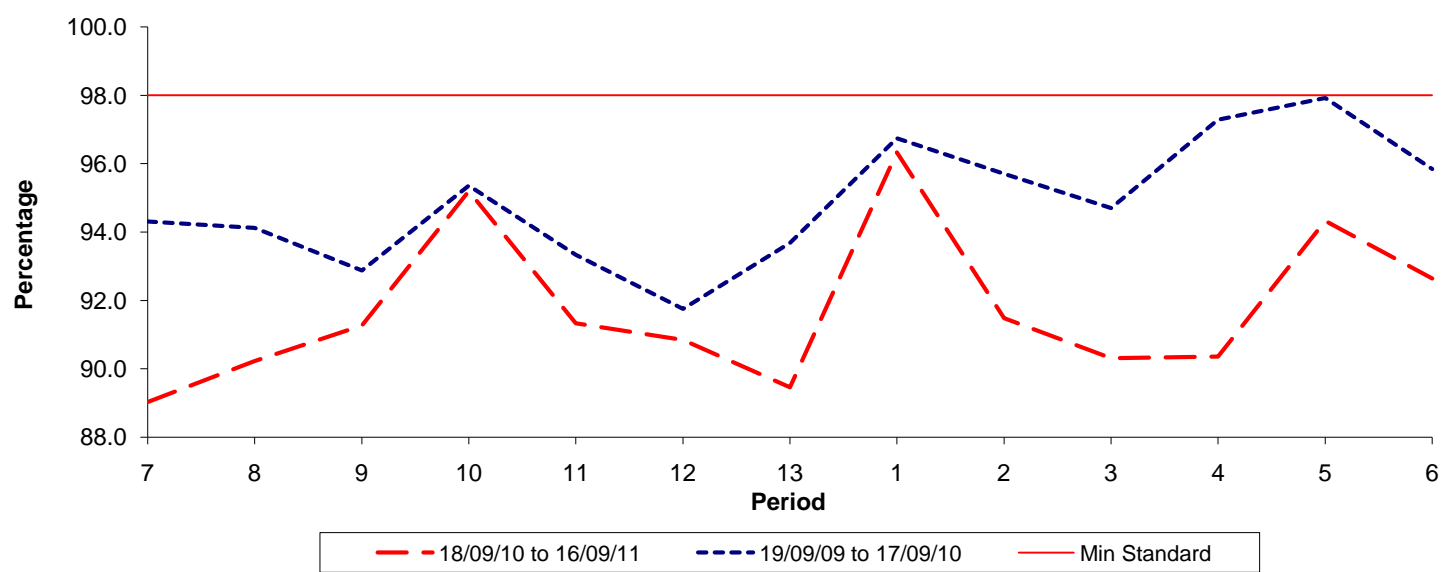


Date Range / Period	7	8	9	10	11	12	13	1	2	3	4	5	6
18/09/10 to 16/09/11	1.28	2.19	2.04	1.91	1.85	1.88	1.88	1.77	1.66	1.74	1.80	1.60	1.59
19/09/09 to 17/09/10	1.23	1.42	1.54	1.66	1.69	1.77	1.66	1.42	1.17	1.03	1.01	0.96	0.95
Min Standard	1.50	1.40	1.40	1.40	1.40	1.40	1.40	1.40	1.40	1.40	1.40	1.40	1.40

Excess Waiting Time figures are based on 12 weeks data

Kilometre Performance

% Kilometres Operated



Date Range / Period	7	8	9	10	11	12	13	1	2	3	4	5	6
18/09/10 to 16/09/11	89.03	90.23	91.27	95.20	91.33	90.85	89.46	96.33	91.48	90.31	90.36	94.33	92.64
19/09/09 to 17/09/10	94.31	94.12	92.87	95.35	93.33	91.75	93.68	96.74	95.70	94.70	97.28	97.92	95.84
Min Standard	98.00	98.00	98.00	98.00	98.00	98.00	98.00	98.00	98.00	98.00	98.00	98.00	98.00

Kilometre figures are based on 4 weeks data