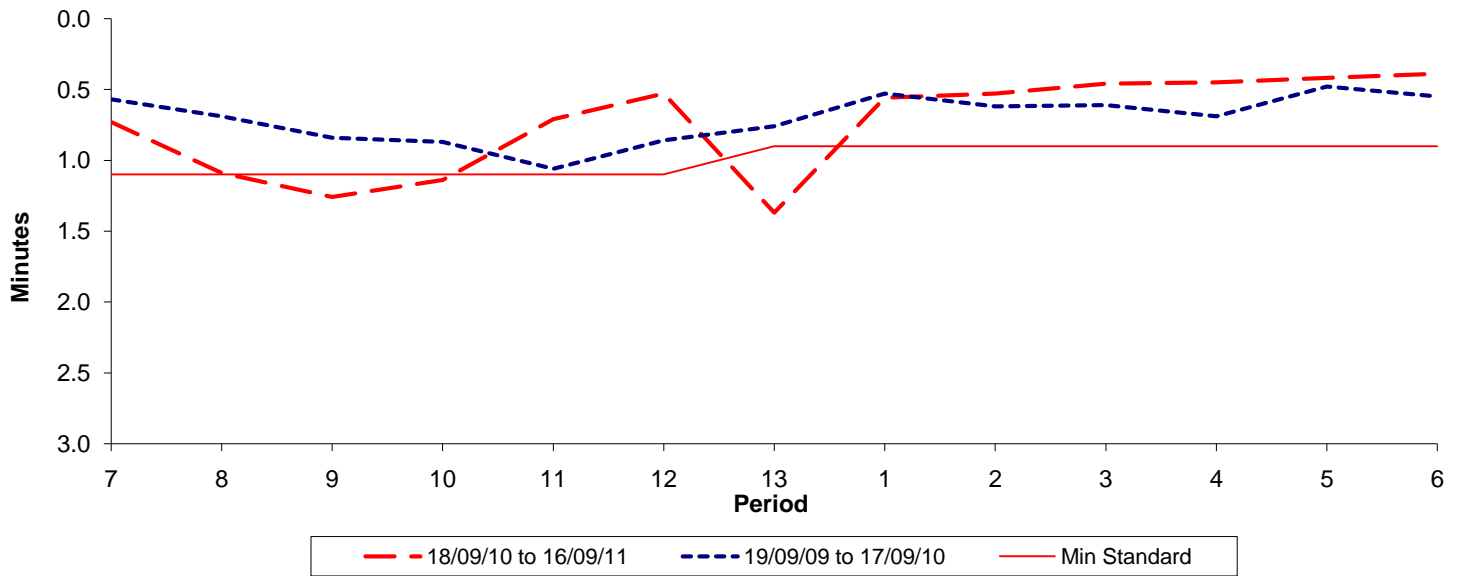




**Reliability Performance ( High Frequency )**

Excess Waiting Time (minutes)

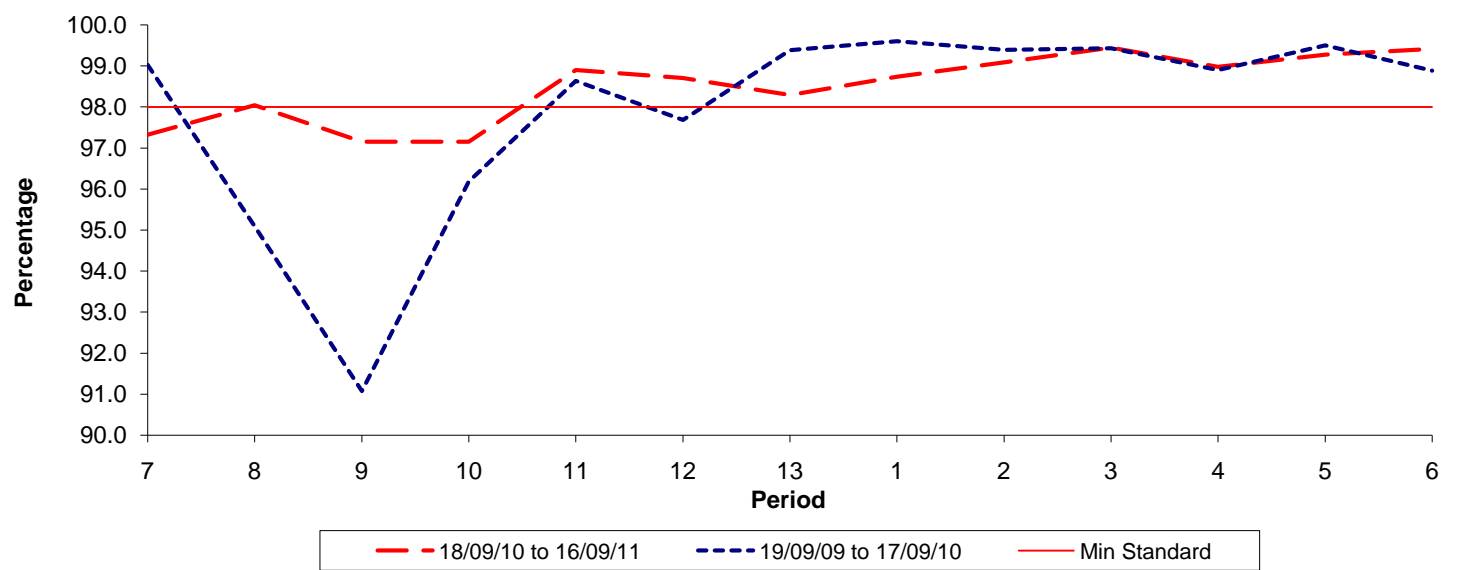


Date Range / Period	7	8	9	10	11	12	13	1	2	3	4	5	6
18/09/10 to 16/09/11	0.73	1.09	1.26	1.14	0.71	0.53	1.37	0.56	0.53	0.46	0.45	0.42	0.39
19/09/09 to 17/09/10	0.57	0.69	0.84	0.87	1.06	0.86	0.76	0.53	0.62	0.61	0.69	0.48	0.55
Min Standard	1.10	1.10	1.10	1.10	1.10	1.10	0.90	0.90	0.90	0.90	0.90	0.90	0.90

Excess Waiting Time figures are based on 12 weeks data

**Kilometre Performance**

% Kilometres Operated



Date Range / Period	7	8	9	10	11	12	13	1	2	3	4	5	6
18/09/10 to 16/09/11	97.32	98.04	97.15	97.15	98.90	98.71	98.29	98.74	99.09	99.45	98.98	99.28	99.42
19/09/09 to 17/09/10	99.02	95.09	91.07	96.18	98.63	97.68	99.38	99.60	99.39	99.43	98.90	99.50	98.88
Min Standard	98.00	98.00	98.00	98.00	98.00	98.00	98.00	98.00	98.00	98.00	98.00	98.00	98.00

Kilometre figures are based on 4 weeks data