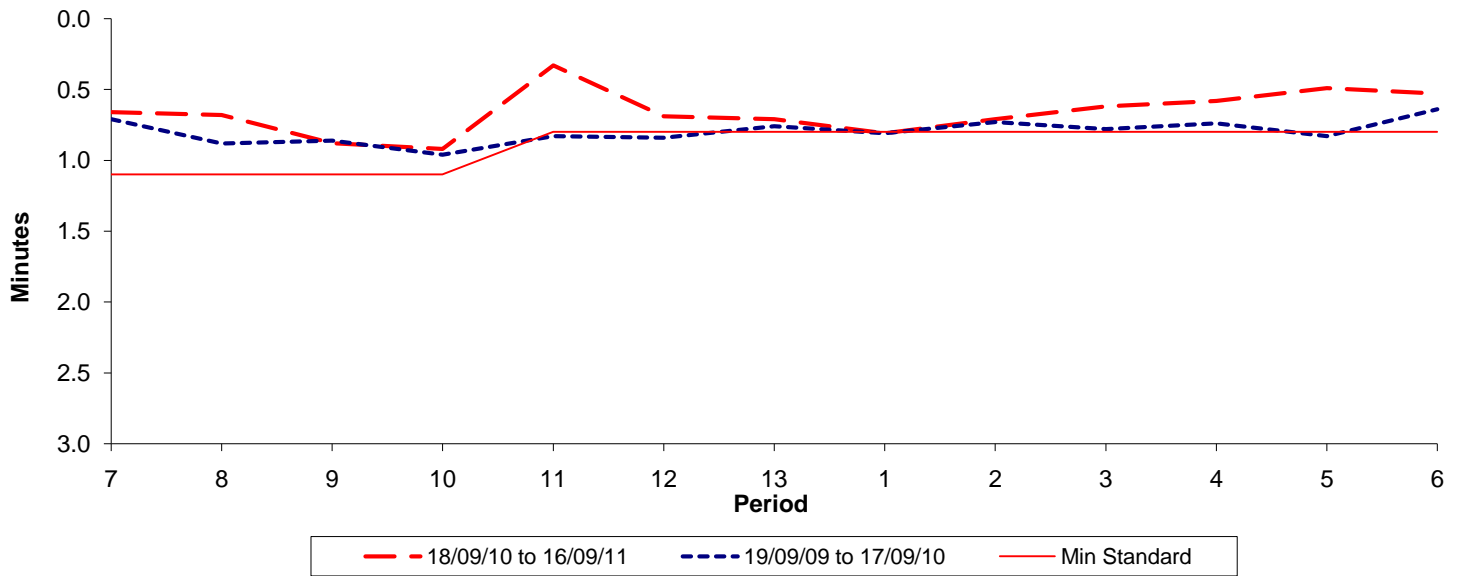




Reliability Performance (High Frequency)

Excess Waiting Time (minutes)

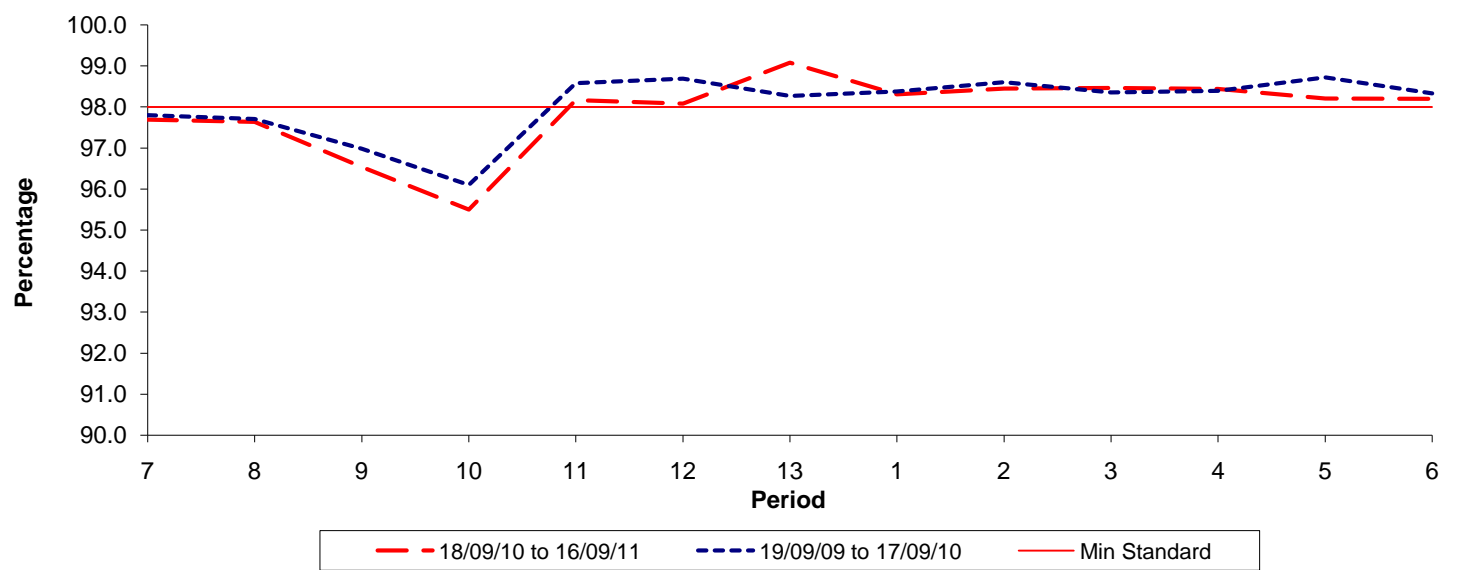


Date Range / Period	7	8	9	10	11	12	13	1	2	3	4	5	6
18/09/10 to 16/09/11	0.66	0.68	0.88	0.92	0.33	0.69	0.71	0.81	0.71	0.62	0.58	0.49	0.53
19/09/09 to 17/09/10	0.71	0.88	0.86	0.96	0.83	0.84	0.76	0.81	0.73	0.78	0.74	0.83	0.64
Min Standard	1.10	1.10	1.10	1.10	0.80	0.80	0.80	0.80	0.80	0.80	0.80	0.80	0.80

Excess Waiting Time figures are based on 12 weeks data

Kilometre Performance

% Kilometres Operated



Date Range / Period	7	8	9	10	11	12	13	1	2	3	4	5	6
18/09/10 to 16/09/11	97.69	97.64	96.54	95.50	98.17	98.08	99.08	98.31	98.45	98.46	98.44	98.21	98.20
19/09/09 to 17/09/10	97.80	97.71	96.98	96.10	98.58	98.69	98.27	98.38	98.60	98.35	98.39	98.72	98.33
Min Standard	98.00	98.00	98.00	98.00	98.00	98.00	98.00	98.00	98.00	98.00	98.00	98.00	98.00

Kilometre figures are based on 4 weeks data