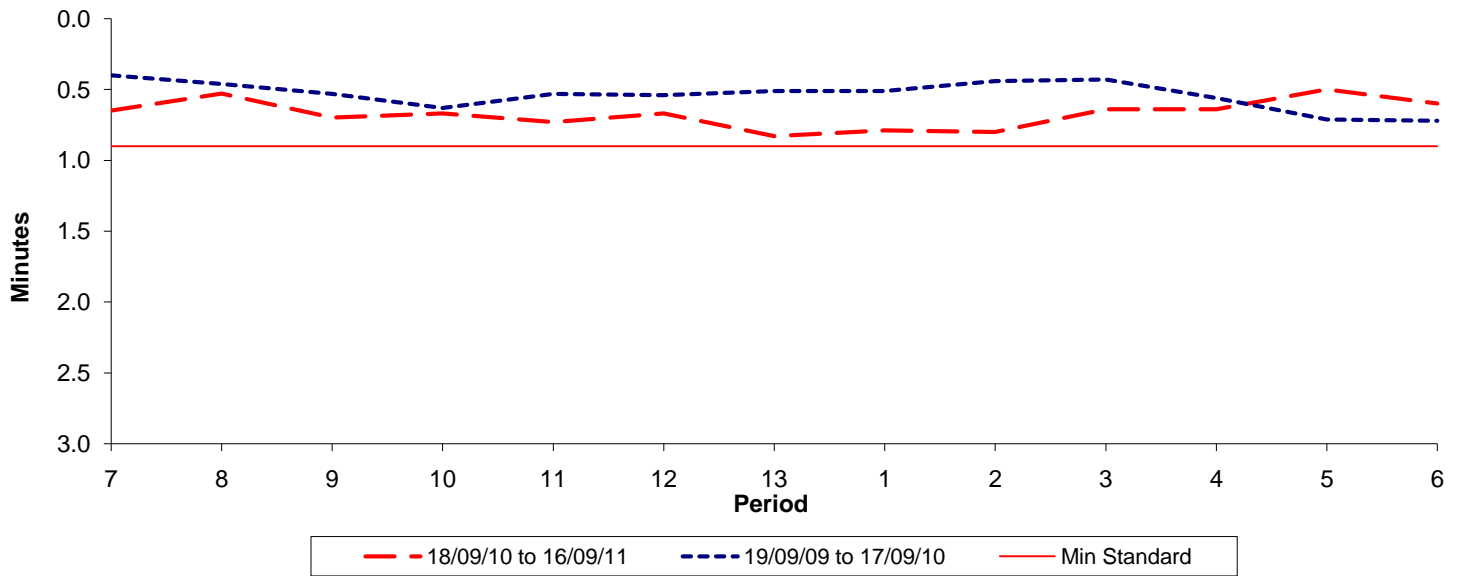




Reliability Performance (High Frequency)

Excess Waiting Time (minutes)

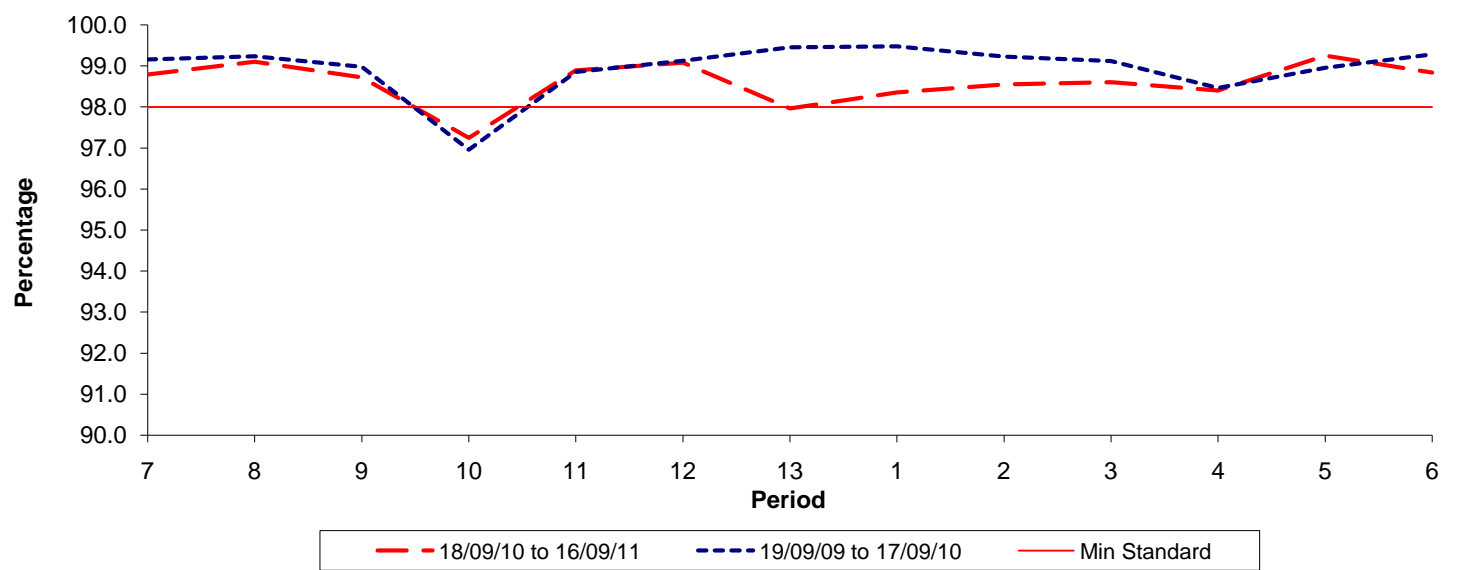


Date Range / Period	7	8	9	10	11	12	13	1	2	3	4	5	6
18/09/10 to 16/09/11	0.65	0.53	0.70	0.67	0.73	0.67	0.83	0.79	0.80	0.64	0.64	0.50	0.60
19/09/09 to 17/09/10	0.40	0.46	0.53	0.63	0.53	0.54	0.51	0.51	0.44	0.43	0.56	0.71	0.72
Min Standard	0.90	0.90	0.90	0.90	0.90	0.90	0.90	0.90	0.90	0.90	0.90	0.90	0.90

Excess Waiting Time figures are based on 12 weeks data

Kilometre Performance

% Kilometres Operated



Date Range / Period	7	8	9	10	11	12	13	1	2	3	4	5	6
18/09/10 to 16/09/11	98.79	99.10	98.72	97.25	98.89	99.08	97.96	98.35	98.55	98.60	98.40	99.25	98.84
19/09/09 to 17/09/10	99.16	99.24	98.98	96.96	98.86	99.13	99.46	99.48	99.23	99.12	98.46	98.96	99.28
Min Standard	98.00	98.00	98.00	98.00	98.00	98.00	98.00	98.00	98.00	98.00	98.00	98.00	98.00

Kilometre figures are based on 4 weeks data