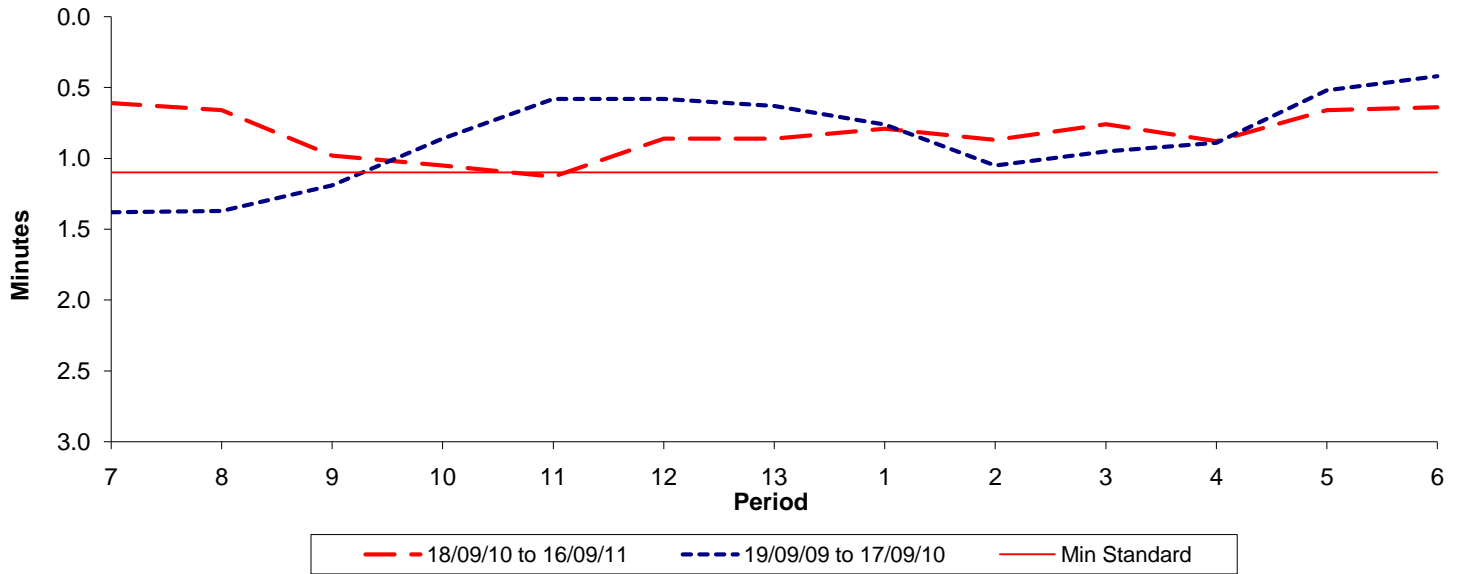




Reliability Performance (High Frequency)

Excess Waiting Time (minutes)

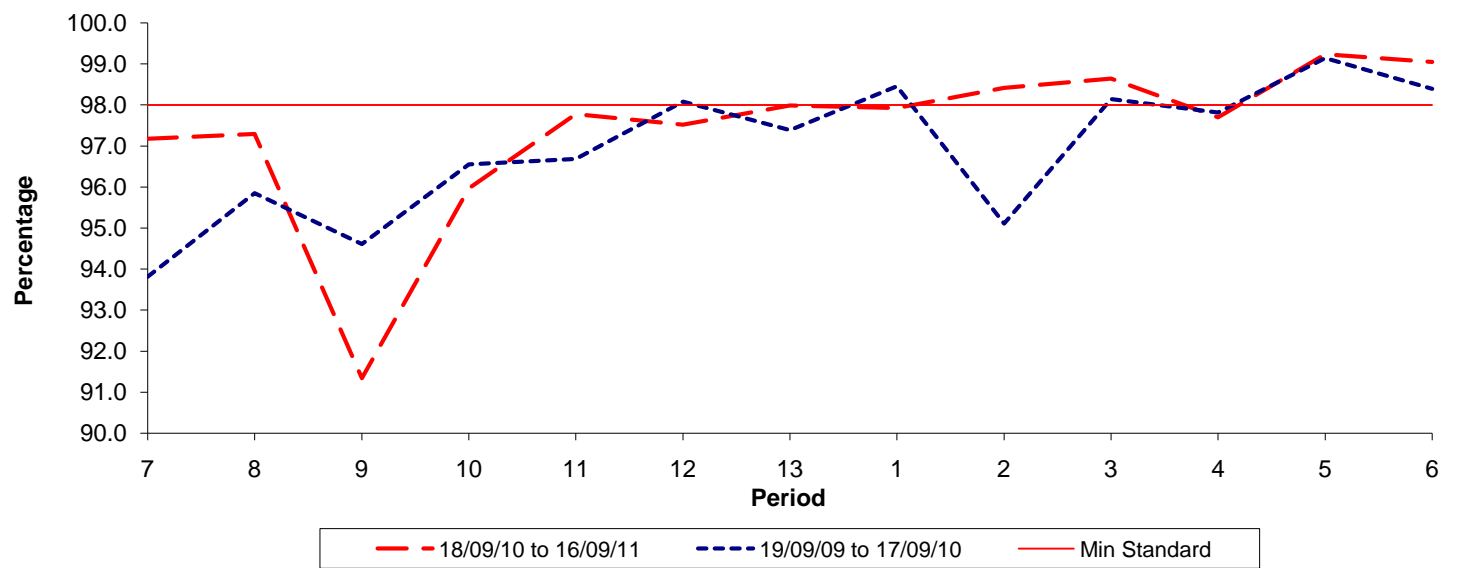


Date Range / Period	7	8	9	10	11	12	13	1	2	3	4	5	6
18/09/10 to 16/09/11	0.61	0.66	0.98	1.05	1.13	0.86	0.86	0.79	0.87	0.76	0.88	0.66	0.64
19/09/09 to 17/09/10	1.38	1.37	1.19	0.86	0.58	0.58	0.63	0.76	1.05	0.95	0.89	0.52	0.42
Min Standard	1.10	1.10	1.10	1.10	1.10	1.10	1.10	1.10	1.10	1.10	1.10	1.10	1.10

Excess Waiting Time figures are based on 12 weeks data

Kilometre Performance

% Kilometres Operated



Date Range / Period	7	8	9	10	11	12	13	1	2	3	4	5	6
18/09/10 to 16/09/11	97.18	97.29	91.34	95.97	97.78	97.52	97.99	97.93	98.42	98.65	97.70	99.24	99.05
19/09/09 to 17/09/10	93.81	95.85	94.61	96.55	96.68	98.08	97.39	98.46	95.11	98.15	97.82	99.14	98.40
Min Standard	98.00	98.00	98.00	98.00	98.00	98.00	98.00	98.00	98.00	98.00	98.00	98.00	98.00

Kilometre figures are based on 4 weeks data