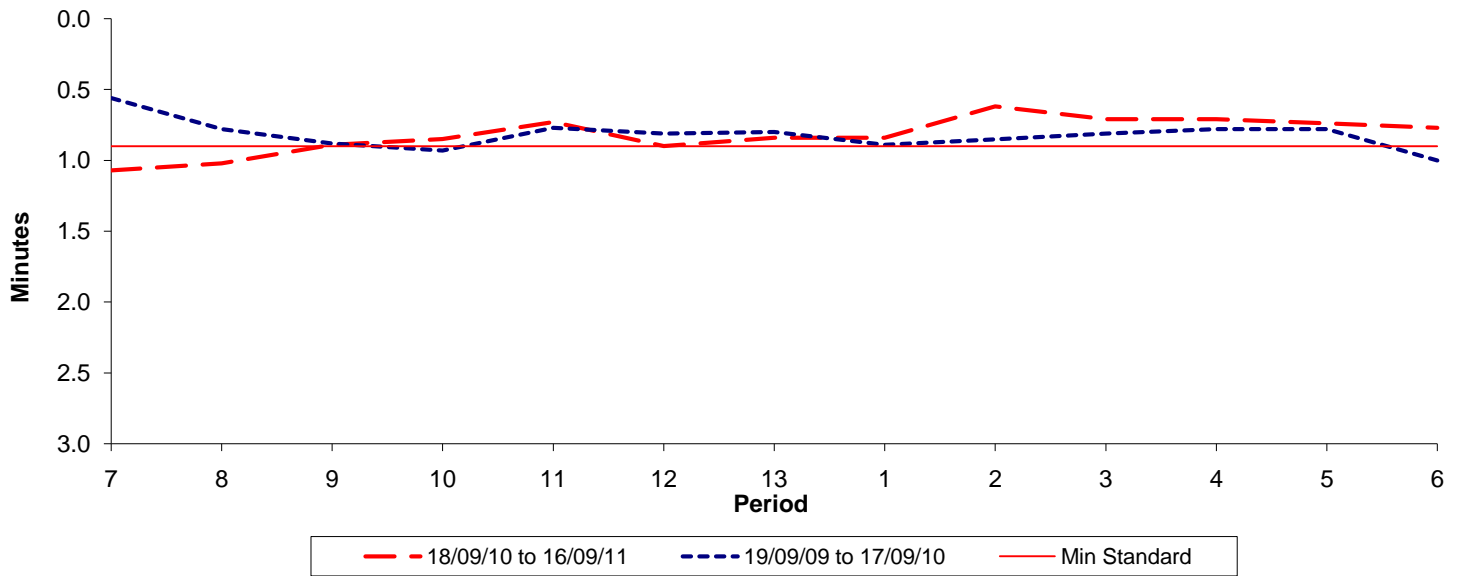




Reliability Performance (High Frequency)

Excess Waiting Time (minutes)

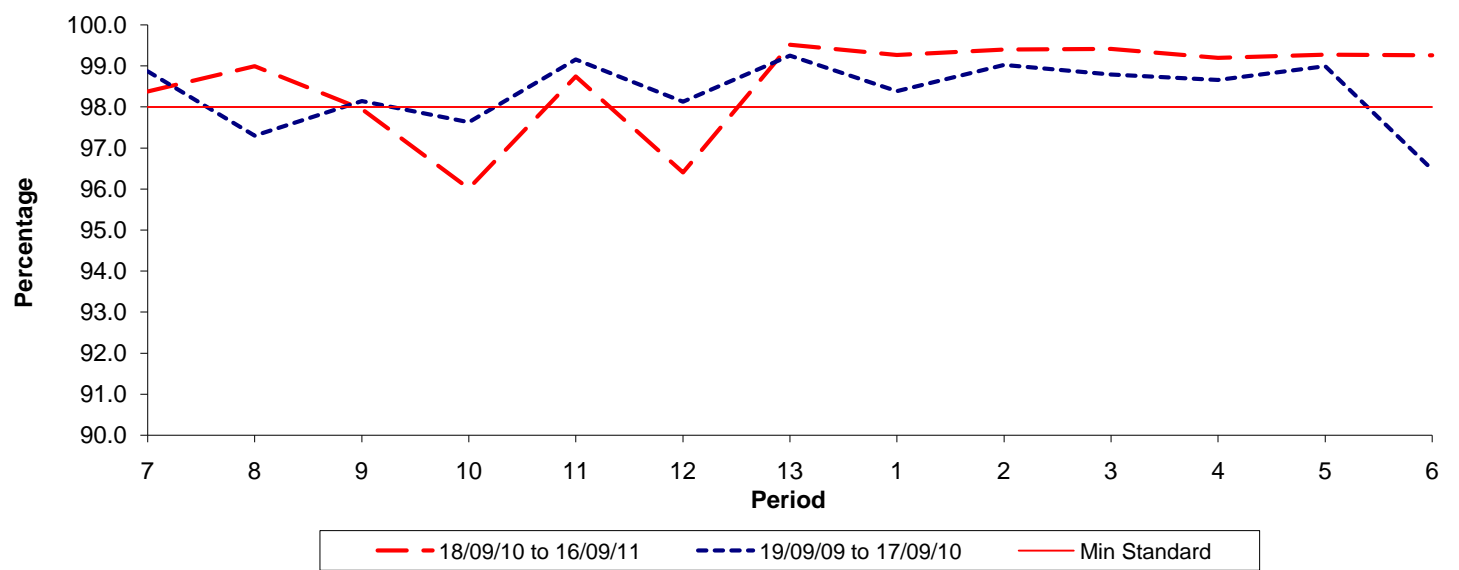


Date Range / Period	7	8	9	10	11	12	13	1	2	3	4	5	6
18/09/10 to 16/09/11	1.07	1.02	0.89	0.85	0.73	0.90	0.84	0.84	0.62	0.71	0.71	0.74	0.77
19/09/09 to 17/09/10	0.56	0.78	0.88	0.93	0.77	0.81	0.80	0.89	0.85	0.81	0.78	0.78	1.00
Min Standard	0.90	0.90	0.90	0.90	0.90	0.90	0.90	0.90	0.90	0.90	0.90	0.90	0.90

Excess Waiting Time figures are based on 12 weeks data

Kilometre Performance

% Kilometres Operated



Date Range / Period	7	8	9	10	11	12	13	1	2	3	4	5	6
18/09/10 to 16/09/11	98.38	98.99	97.95	96.01	98.75	96.41	99.52	99.27	99.40	99.42	99.20	99.28	99.26
19/09/09 to 17/09/10	98.87	97.30	98.14	97.63	99.16	98.13	99.25	98.38	99.02	98.79	98.66	98.99	96.48
Min Standard	98.00	98.00	98.00	98.00	98.00	98.00	98.00	98.00	98.00	98.00	98.00	98.00	98.00

Kilometre figures are based on 4 weeks data