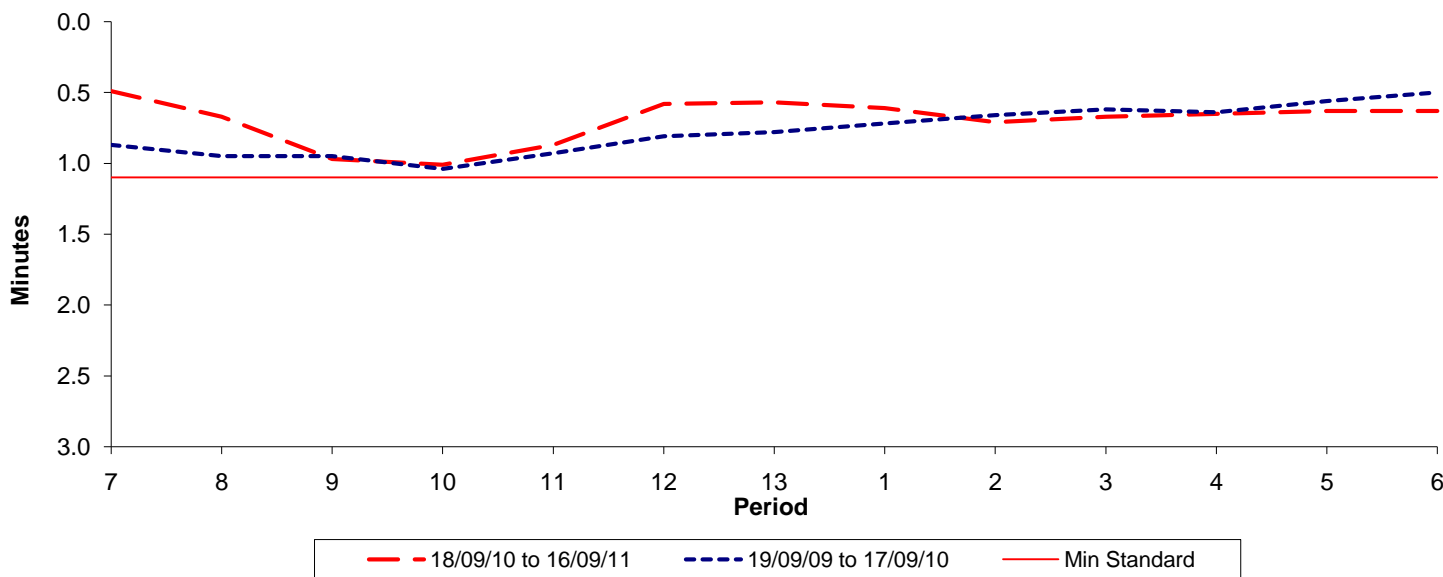




Reliability Performance (High Frequency)

Excess Waiting Time (minutes)

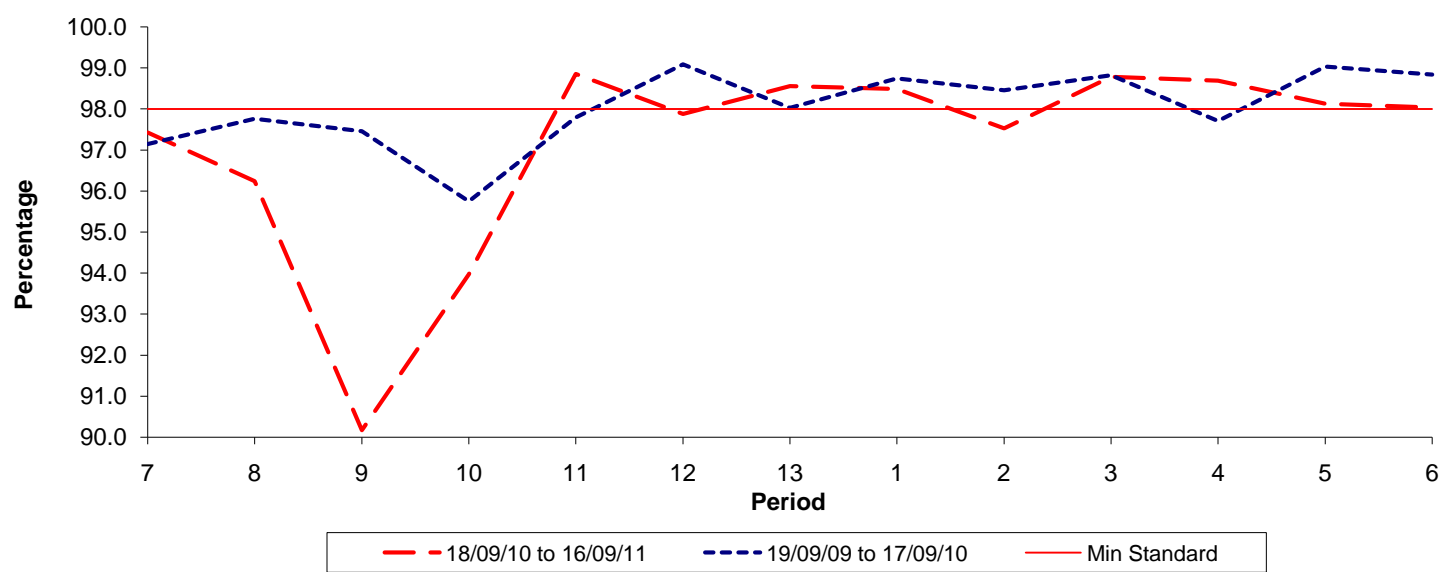


Date Range / Period	7	8	9	10	11	12	13	1	2	3	4	5	6
18/09/10 to 16/09/11	0.49	0.67	0.97	1.01	0.87	0.58	0.57	0.61	0.71	0.67	0.65	0.63	0.63
19/09/09 to 17/09/10	0.87	0.95	0.95	1.04	0.93	0.81	0.78	0.72	0.66	0.62	0.64	0.56	0.50
Min Standard	1.10	1.10	1.10	1.10	1.10	1.10	1.10	1.10	1.10	1.10	1.10	1.10	1.10

Excess Waiting Time figures are based on 12 weeks data

Kilometre Performance

% Kilometres Operated



Date Range / Period	7	8	9	10	11	12	13	1	2	3	4	5	6
18/09/10 to 16/09/11	97.43	96.24	90.17	93.97	98.86	97.89	98.56	98.49	97.53	98.79	98.69	98.13	98.04
19/09/09 to 17/09/10	97.15	97.76	97.46	95.75	97.80	99.09	98.03	98.75	98.46	98.82	97.71	99.04	98.84
Min Standard	98.00	98.00	98.00	98.00	98.00	98.00	98.00	98.00	98.00	98.00	98.00	98.00	98.00

Kilometre figures are based on 4 weeks data