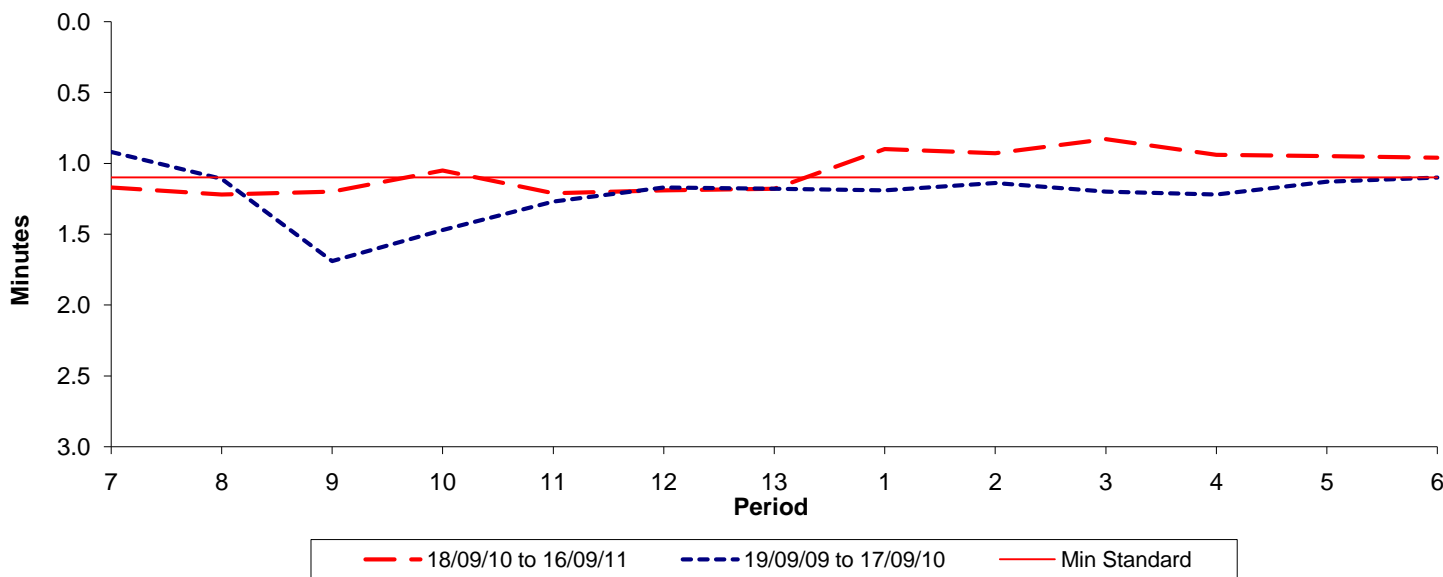




Reliability Performance (High Frequency)

Excess Waiting Time (minutes)

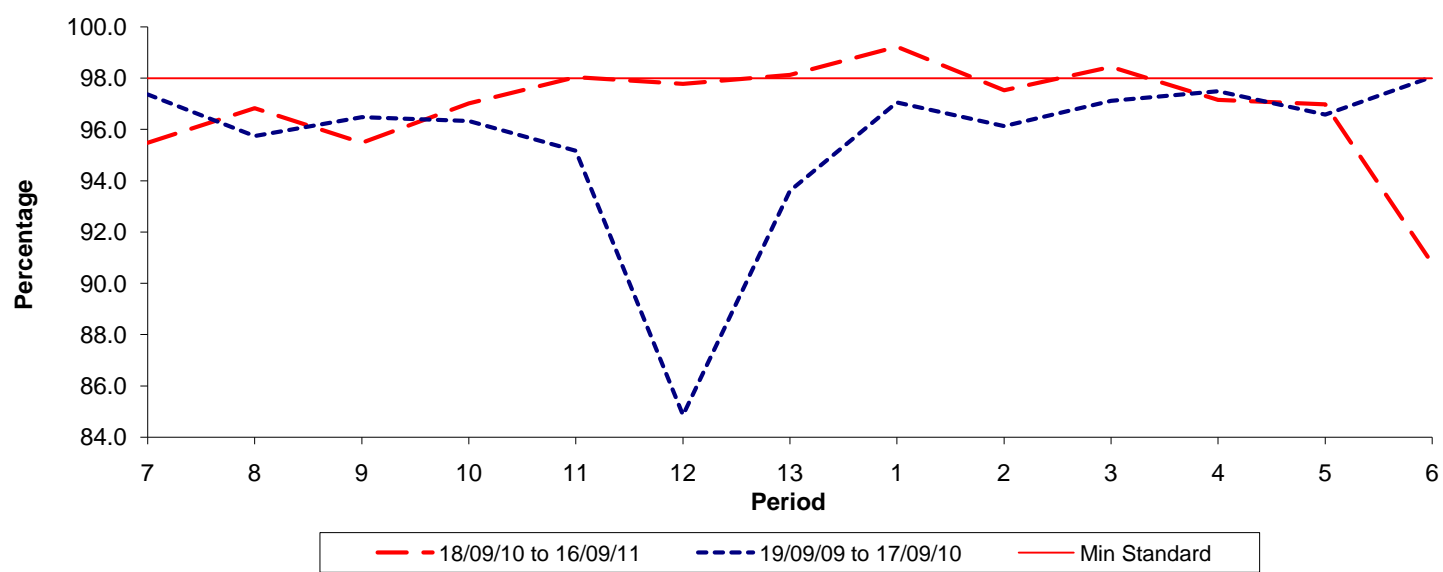


Date Range / Period	7	8	9	10	11	12	13	1	2	3	4	5	6
18/09/10 to 16/09/11	1.17	1.22	1.20	1.05	1.21	1.19	1.18	0.90	0.93	0.83	0.94	0.95	0.96
19/09/09 to 17/09/10	0.92	1.11	1.69	1.47	1.27	1.17	1.18	1.19	1.14	1.20	1.22	1.13	1.10
Min Standard	1.10	1.10	1.10	1.10	1.10	1.10	1.10	1.10	1.10	1.10	1.10	1.10	1.10

Excess Waiting Time figures are based on 12 weeks data

Kilometre Performance

% Kilometres Operated



Date Range / Period	7	8	9	10	11	12	13	1	2	3	4	5	6
18/09/10 to 16/09/11	95.48	96.84	95.48	97.02	98.05	97.78	98.13	99.23	97.53	98.44	97.16	96.98	90.78
19/09/09 to 17/09/10	97.37	95.74	96.48	96.33	95.16	84.85	93.61	97.05	96.13	97.12	97.49	96.57	98.05
Min Standard	98.00	98.00	98.00	98.00	98.00	98.00	98.00	98.00	98.00	98.00	98.00	98.00	98.00

Kilometre figures are based on 4 weeks data