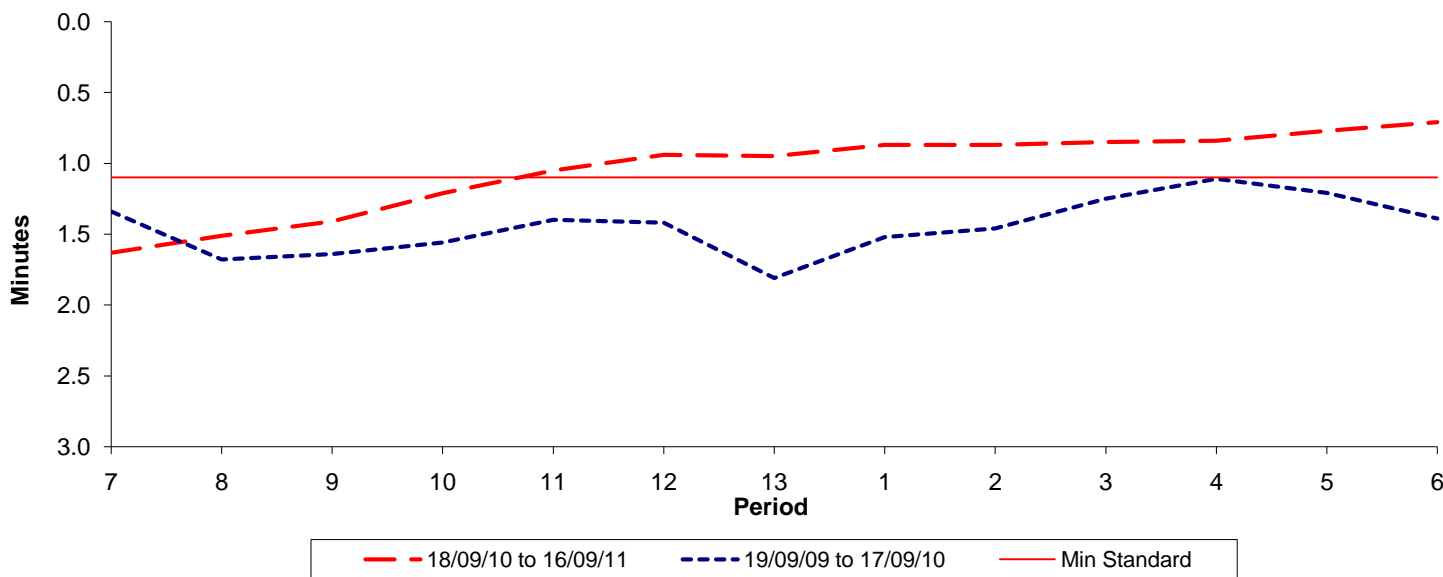




Reliability Performance (High Frequency)

Excess Waiting Time (minutes)

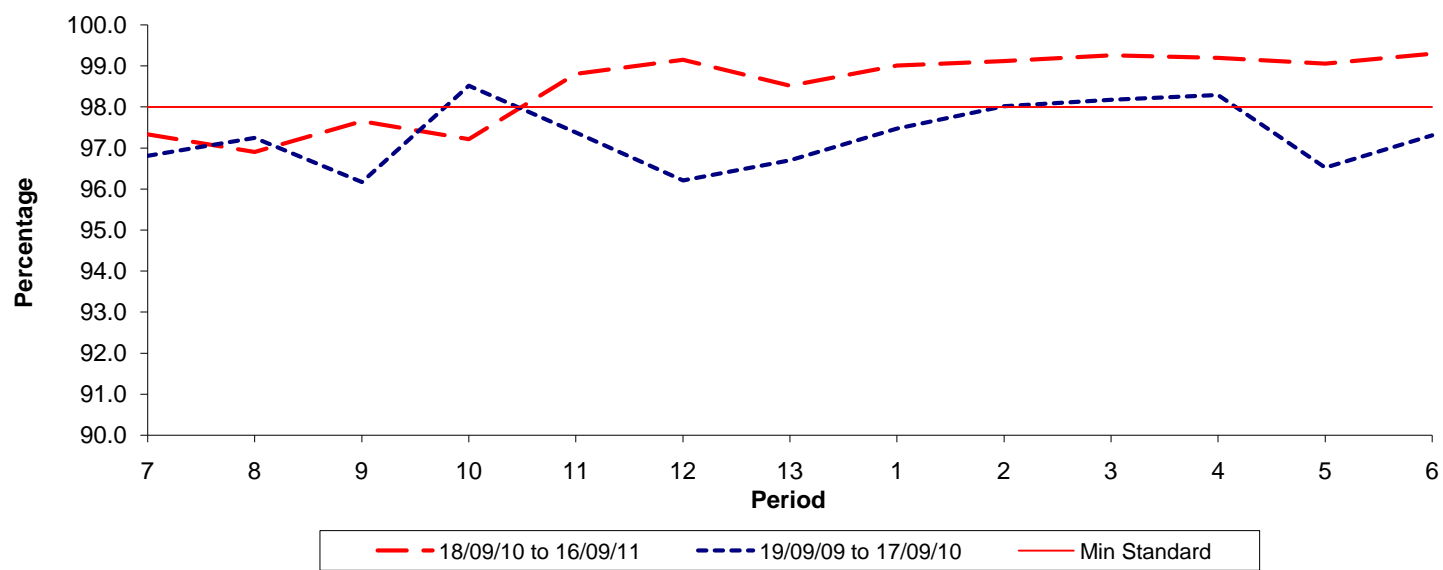


Date Range / Period	7	8	9	10	11	12	13	1	2	3	4	5	6
18/09/10 to 16/09/11	1.63	1.51	1.41	1.21	1.05	0.94	0.95	0.87	0.87	0.85	0.84	0.77	0.71
19/09/09 to 17/09/10	1.34	1.68	1.64	1.56	1.40	1.42	1.81	1.52	1.46	1.25	1.11	1.21	1.39
Min Standard	1.10	1.10	1.10	1.10	1.10	1.10	1.10	1.10	1.10	1.10	1.10	1.10	1.10

Excess Waiting Time figures are based on 12 weeks data

Kilometre Performance

% Kilometres Operated



Date Range / Period	7	8	9	10	11	12	13	1	2	3	4	5	6
18/09/10 to 16/09/11	97.33	96.90	97.65	97.21	98.81	99.15	98.52	99.01	99.12	99.26	99.20	99.06	99.30
19/09/09 to 17/09/10	96.81	97.25	96.17	98.52	97.38	96.21	96.70	97.47	98.02	98.18	98.29	96.52	97.31
Min Standard	98.00	98.00	98.00	98.00	98.00	98.00	98.00	98.00	98.00	98.00	98.00	98.00	98.00

Kilometre figures are based on 4 weeks data