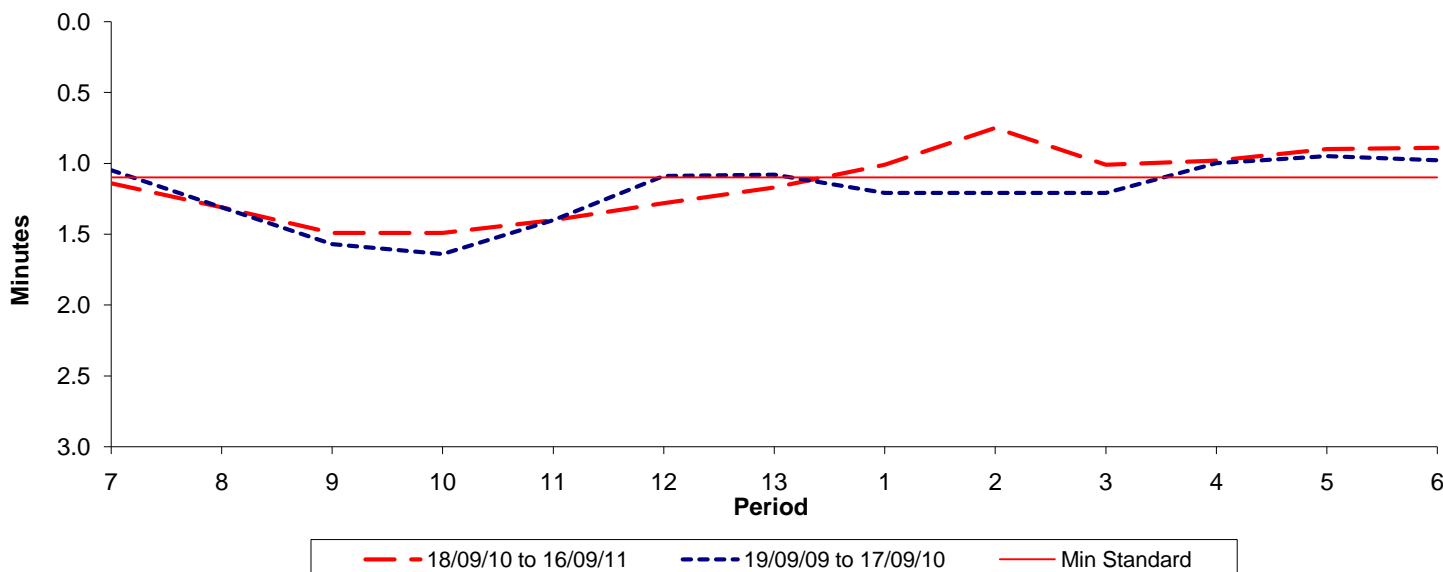




Reliability Performance (High Frequency)

Excess Waiting Time (minutes)

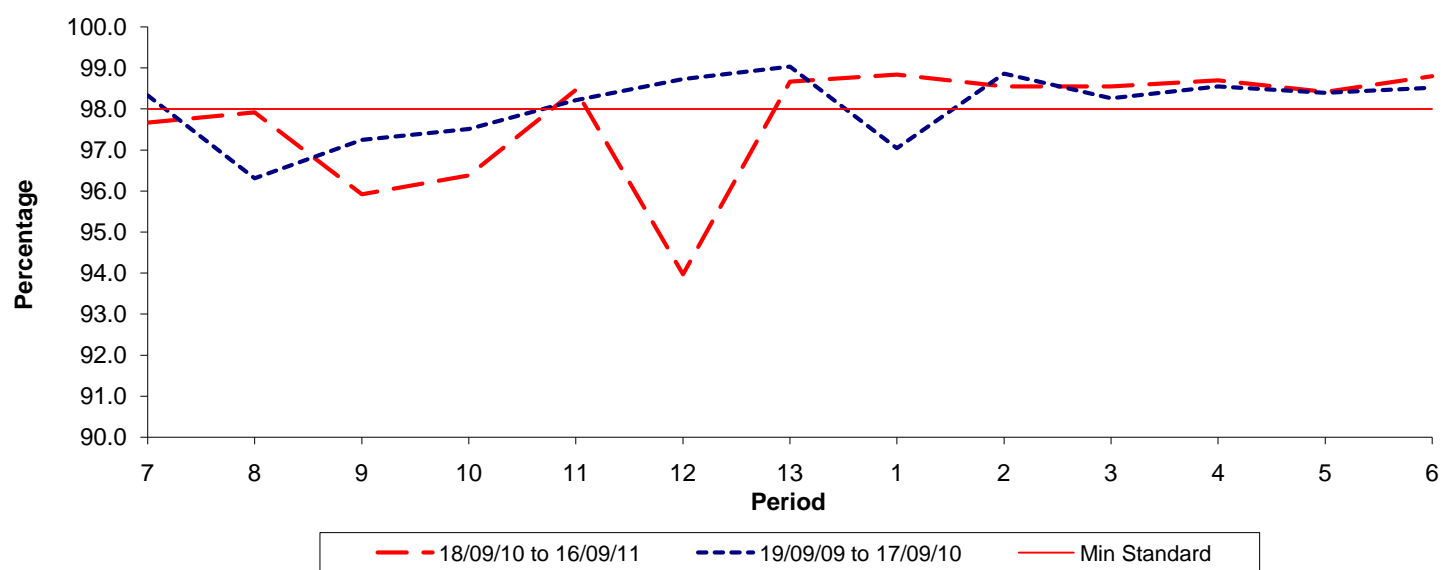


Date Range / Period	7	8	9	10	11	12	13	1	2	3	4	5	6
18/09/10 to 16/09/11	1.14	1.31	1.49	1.49	1.40	1.28	1.17	1.01	0.75	1.01	0.98	0.90	0.89
19/09/09 to 17/09/10	1.05	1.31	1.57	1.64	1.40	1.09	1.08	1.21	1.21	1.21	1.00	0.95	0.98
Min Standard	1.10	1.10	1.10	1.10	1.10	1.10	1.10	1.10	1.10	1.10	1.10	1.10	1.10

Excess Waiting Time figures are based on 12 weeks data

Kilometre Performance

% Kilometres Operated



Date Range / Period	7	8	9	10	11	12	13	1	2	3	4	5	6
18/09/10 to 16/09/11	97.67	97.92	95.92	96.38	98.47	93.97	98.67	98.84	98.55	98.55	98.70	98.42	98.80
19/09/09 to 17/09/10	98.33	96.31	97.25	97.51	98.21	98.73	99.03	97.04	98.86	98.26	98.55	98.39	98.52
Min Standard	98.00	98.00	98.00	98.00	98.00	98.00	98.00	98.00	98.00	98.00	98.00	98.00	98.00

Kilometre figures are based on 4 weeks data