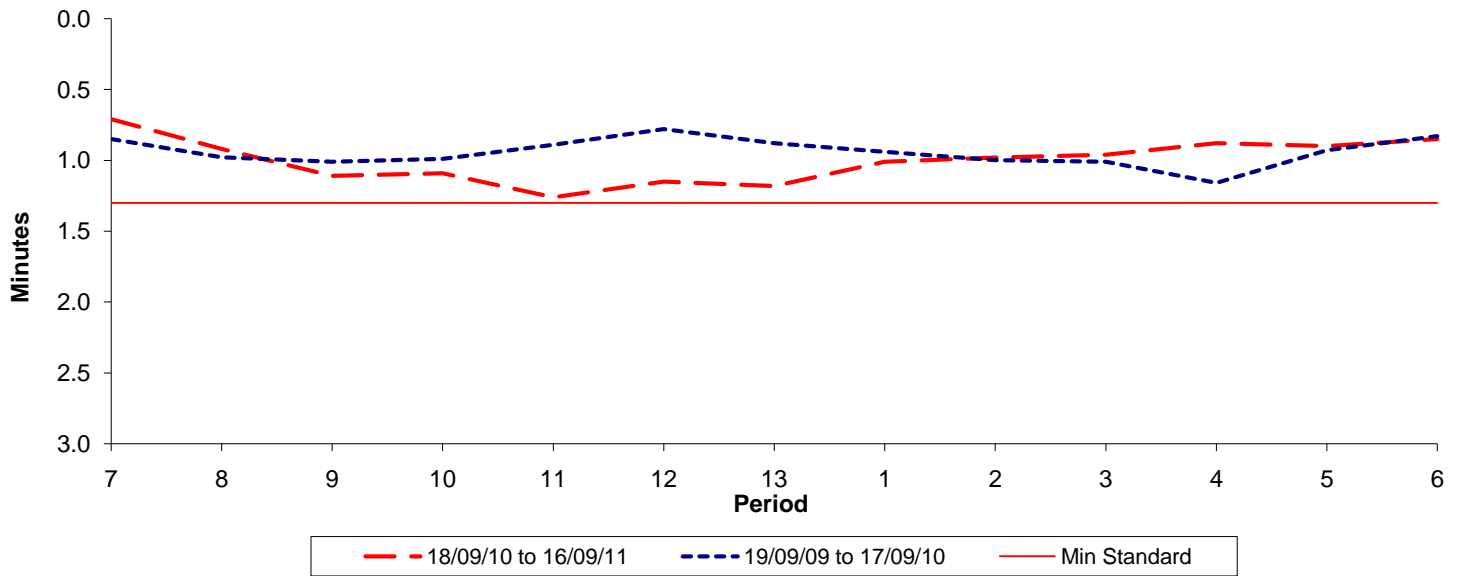




Reliability Performance (High Frequency)

Excess Waiting Time (minutes)

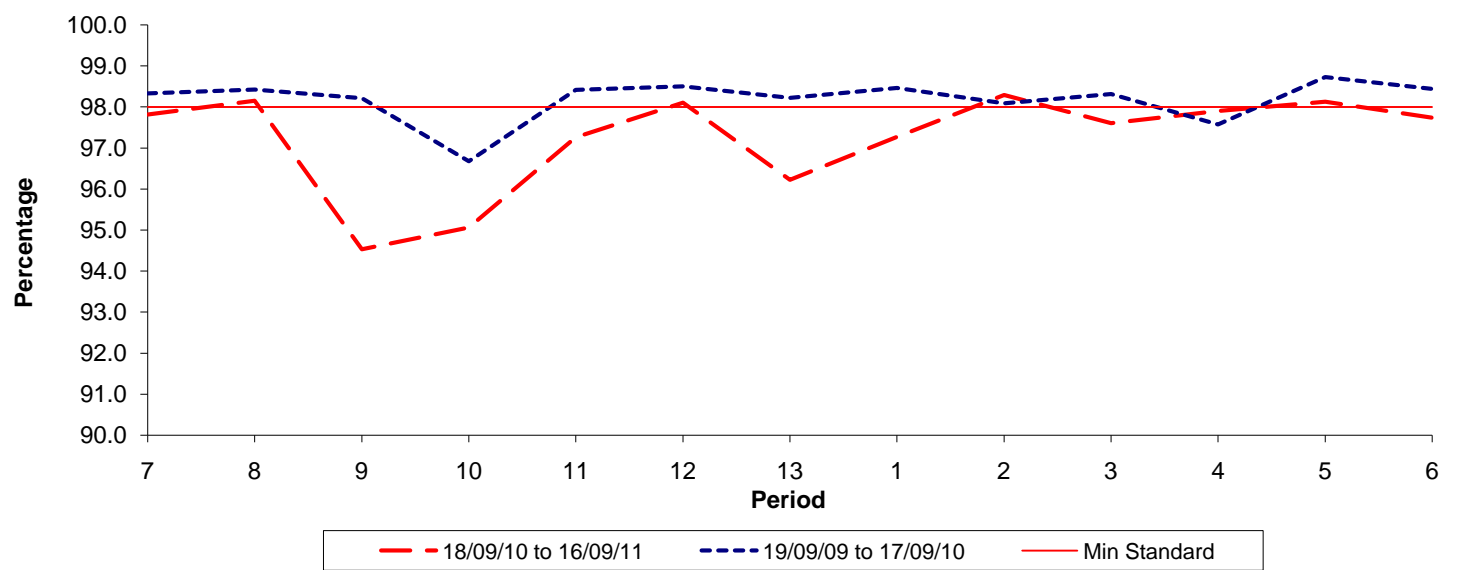


Date Range / Period	7	8	9	10	11	12	13	1	2	3	4	5	6
18/09/10 to 16/09/11	0.71	0.92	1.11	1.09	1.26	1.15	1.18	1.01	0.98	0.96	0.88	0.90	0.85
19/09/09 to 17/09/10	0.85	0.98	1.01	0.99	0.89	0.78	0.88	0.94	1.00	1.01	1.16	0.93	0.83
Min Standard	1.30	1.30	1.30	1.30	1.30	1.30	1.30	1.30	1.30	1.30	1.30	1.30	1.30

Excess Waiting Time figures are based on 12 weeks data

Kilometre Performance

% Kilometres Operated



Date Range / Period	7	8	9	10	11	12	13	1	2	3	4	5	6
18/09/10 to 16/09/11	97.82	98.15	94.53	95.06	97.26	98.10	96.22	97.27	98.29	97.60	97.90	98.13	97.74
19/09/09 to 17/09/10	98.33	98.42	98.21	96.68	98.41	98.50	98.22	98.46	98.09	98.32	97.58	98.73	98.44
Min Standard	98.00	98.00	98.00	98.00	98.00	98.00	98.00	98.00	98.00	98.00	98.00	98.00	98.00

Kilometre figures are based on 4 weeks data