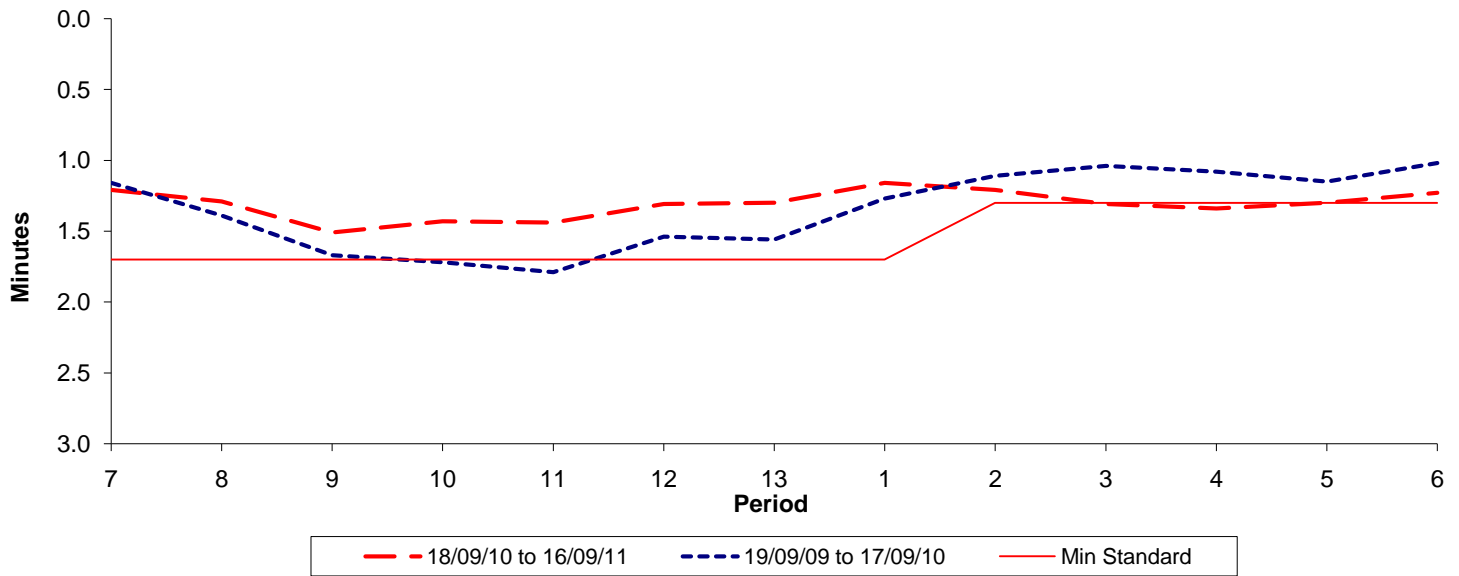




Reliability Performance (High Frequency)

Excess Waiting Time (minutes)

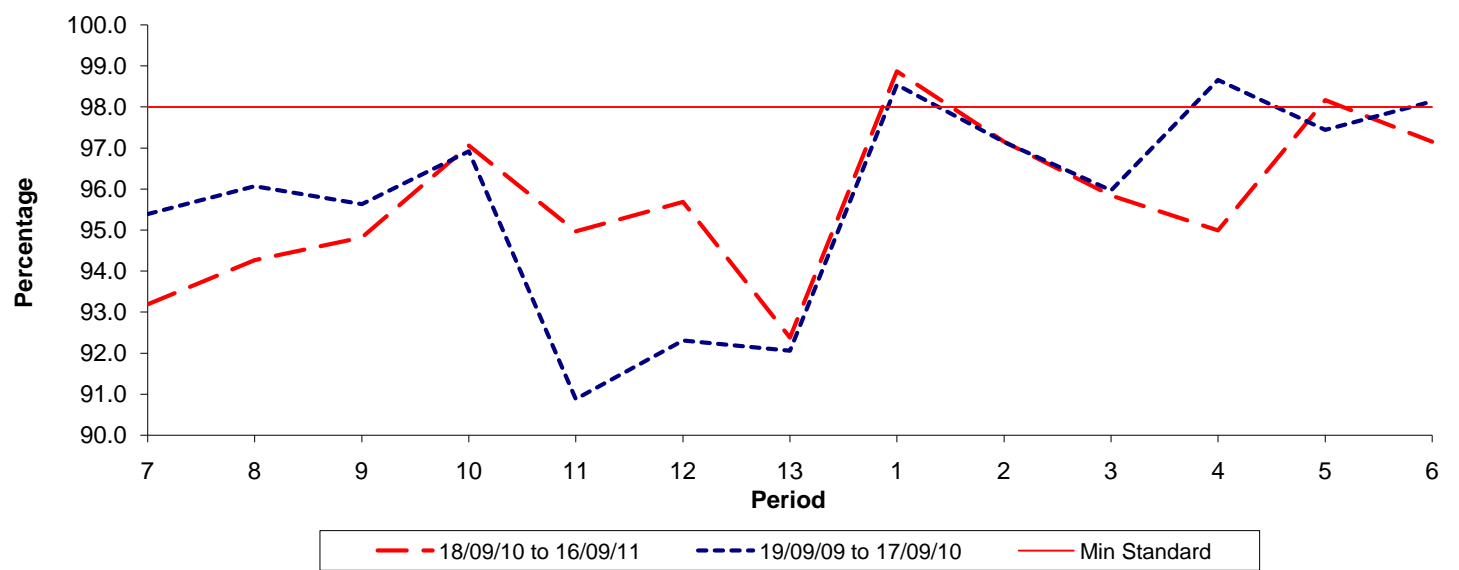


Date Range / Period	7	8	9	10	11	12	13	1	2	3	4	5	6
18/09/10 to 16/09/11	1.21	1.29	1.51	1.43	1.44	1.31	1.30	1.16	1.21	1.31	1.34	1.30	1.23
19/09/09 to 17/09/10	1.16	1.39	1.67	1.72	1.79	1.54	1.56	1.27	1.11	1.04	1.08	1.15	1.02
Min Standard	1.70	1.70	1.70	1.70	1.70	1.70	1.70	1.70	1.30	1.30	1.30	1.30	1.30

Excess Waiting Time figures are based on 12 weeks data

Kilometre Performance

% Kilometres Operated



Date Range / Period	7	8	9	10	11	12	13	1	2	3	4	5	6
18/09/10 to 16/09/11	93.19	94.27	94.82	97.06	94.97	95.69	92.38	98.87	97.15	95.84	94.99	98.17	97.15
19/09/09 to 17/09/10	95.39	96.07	95.63	96.92	90.88	92.31	92.06	98.54	97.15	95.97	98.66	97.44	98.14
Min Standard	98.00	98.00	98.00	98.00	98.00	98.00	98.00	98.00	98.00	98.00	98.00	98.00	98.00

Kilometre figures are based on 4 weeks data