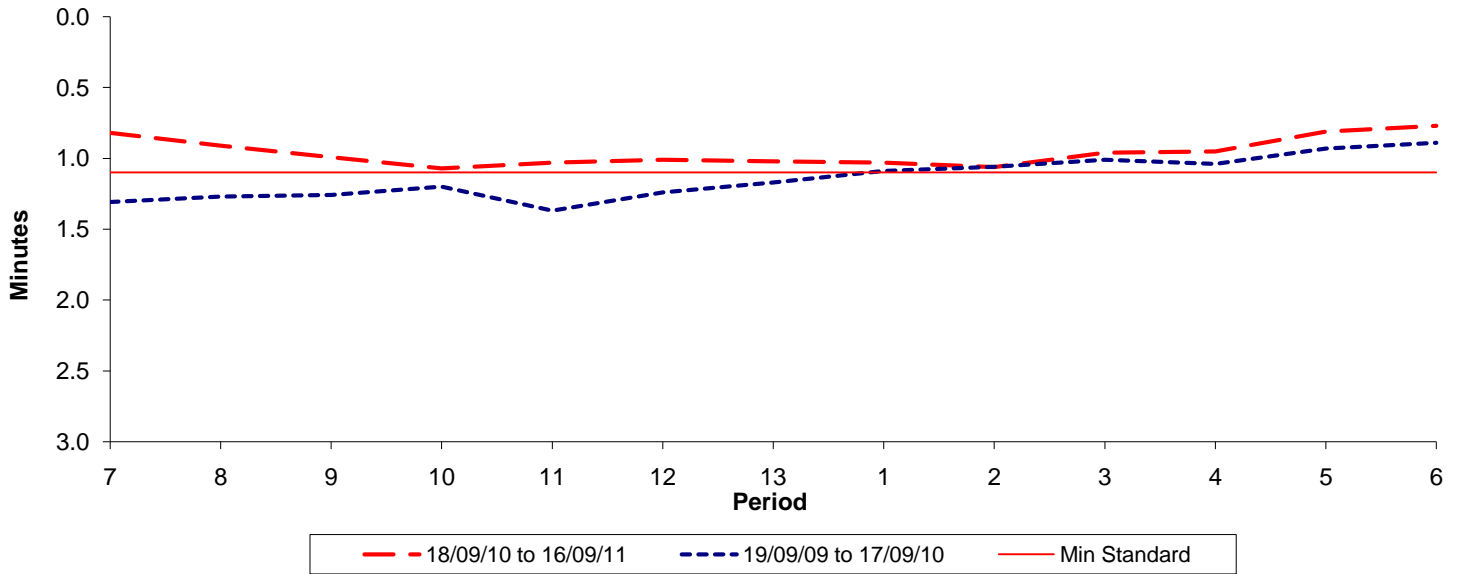




Reliability Performance (High Frequency)

Excess Waiting Time (minutes)

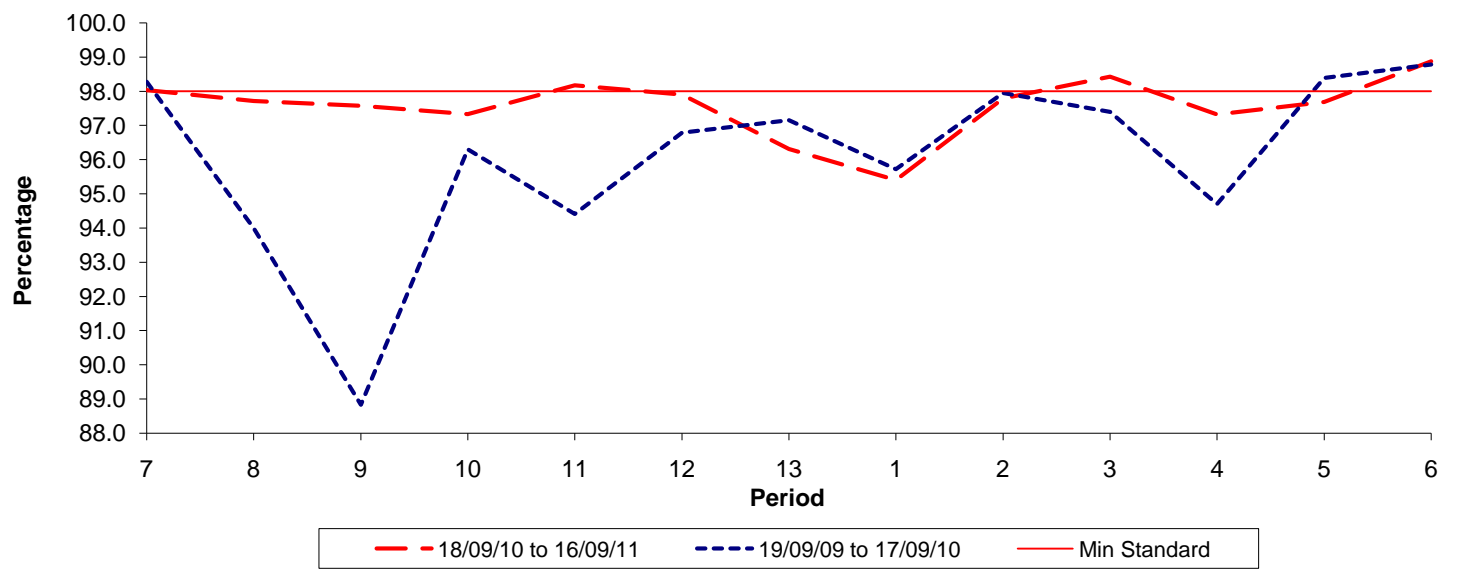


Date Range / Period	7	8	9	10	11	12	13	1	2	3	4	5	6
18/09/10 to 16/09/11	0.82	0.91	0.99	1.07	1.03	1.01	1.02	1.03	1.06	0.96	0.95	0.81	0.77
19/09/09 to 17/09/10	1.31	1.27	1.26	1.20	1.37	1.24	1.17	1.09	1.06	1.01	1.04	0.93	0.89
Min Standard	1.10	1.10	1.10	1.10	1.10	1.10	1.10	1.10	1.10	1.10	1.10	1.10	1.10

Excess Waiting Time figures are based on 12 weeks data

Kilometre Performance

% Kilometres Operated



Date Range / Period	7	8	9	10	11	12	13	1	2	3	4	5	6
18/09/10 to 16/09/11	98.04	97.72	97.58	97.33	98.18	97.90	96.31	95.40	97.79	98.43	97.32	97.69	98.88
19/09/09 to 17/09/10	98.27	94.00	88.83	96.30	94.41	96.79	97.15	95.72	97.95	97.39	94.70	98.39	98.78
Min Standard	98.00	98.00	98.00	98.00	98.00	98.00	98.00	98.00	98.00	98.00	98.00	98.00	98.00

Kilometre figures are based on 4 weeks data