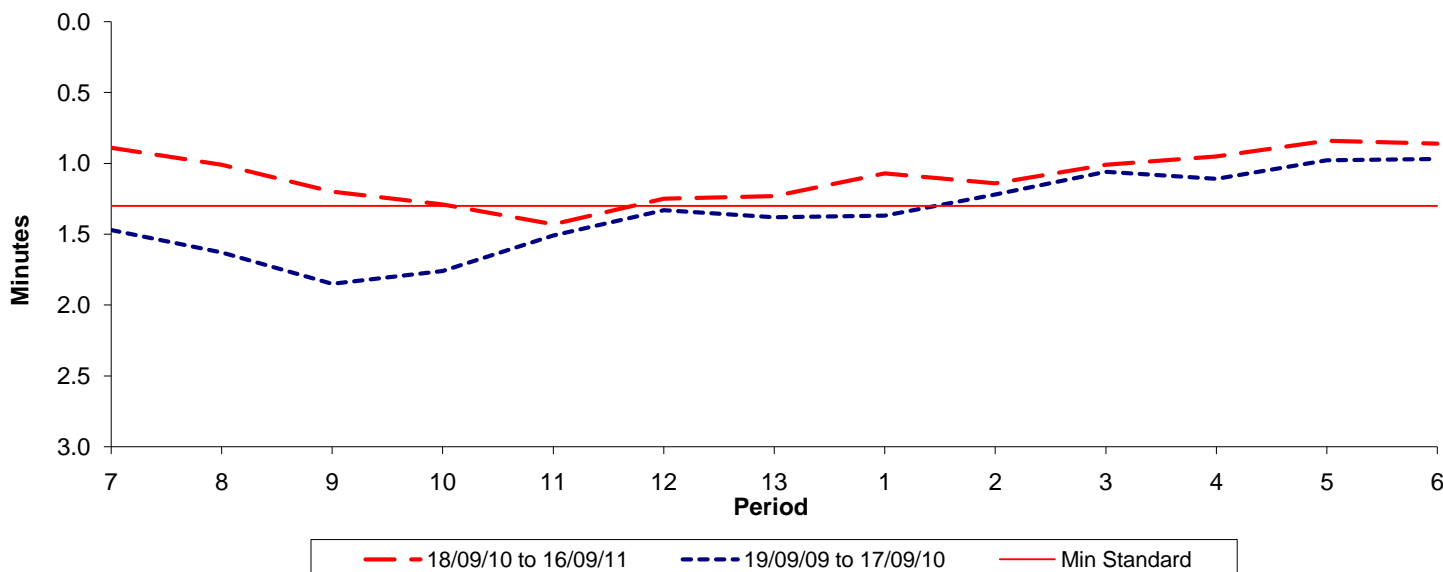




Reliability Performance (High Frequency)

Excess Waiting Time (minutes)

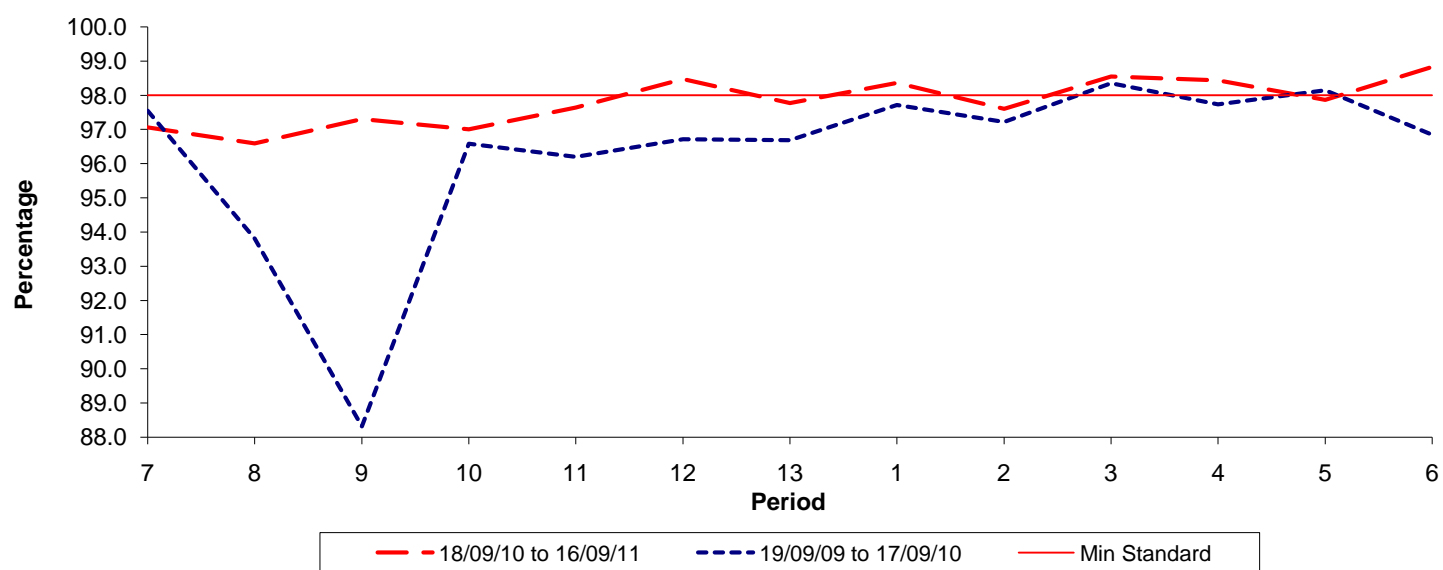


Date Range / Period	7	8	9	10	11	12	13	1	2	3	4	5	6
18/09/10 to 16/09/11	0.89	1.01	1.20	1.29	1.43	1.25	1.23	1.07	1.14	1.01	0.95	0.84	0.86
19/09/09 to 17/09/10	1.47	1.63	1.85	1.76	1.51	1.33	1.38	1.37	1.22	1.06	1.11	0.98	0.97
Min Standard	1.30	1.30	1.30	1.30	1.30	1.30	1.30	1.30	1.30	1.30	1.30	1.30	1.30

Excess Waiting Time figures are based on 12 weeks data

Kilometre Performance

% Kilometres Operated



Date Range / Period	7	8	9	10	11	12	13	1	2	3	4	5	6
18/09/10 to 16/09/11	97.06	96.59	97.30	97.00	97.64	98.47	97.77	98.36	97.60	98.55	98.44	97.86	98.83
19/09/09 to 17/09/10	97.54	93.81	88.31	96.58	96.20	96.71	96.68	97.71	97.22	98.35	97.73	98.14	96.84
Min Standard	98.00	98.00	98.00	98.00	98.00	98.00	98.00	98.00	98.00	98.00	98.00	98.00	98.00

Kilometre figures are based on 4 weeks data