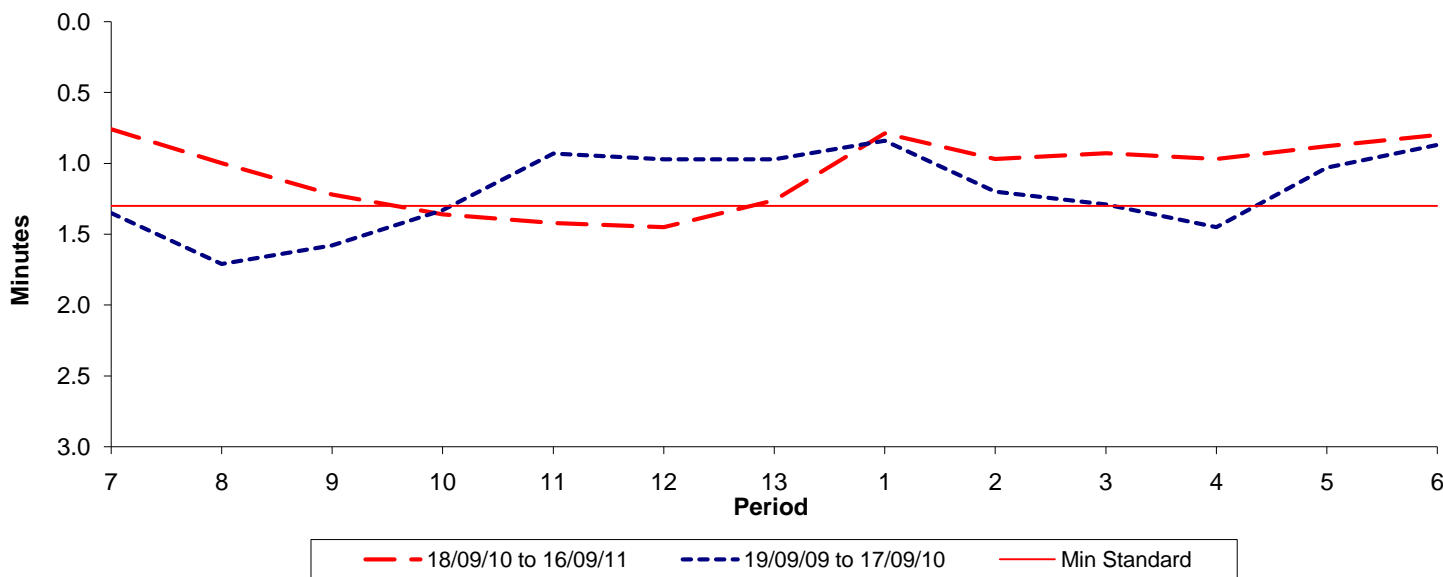




Reliability Performance (High Frequency)

Excess Waiting Time (minutes)

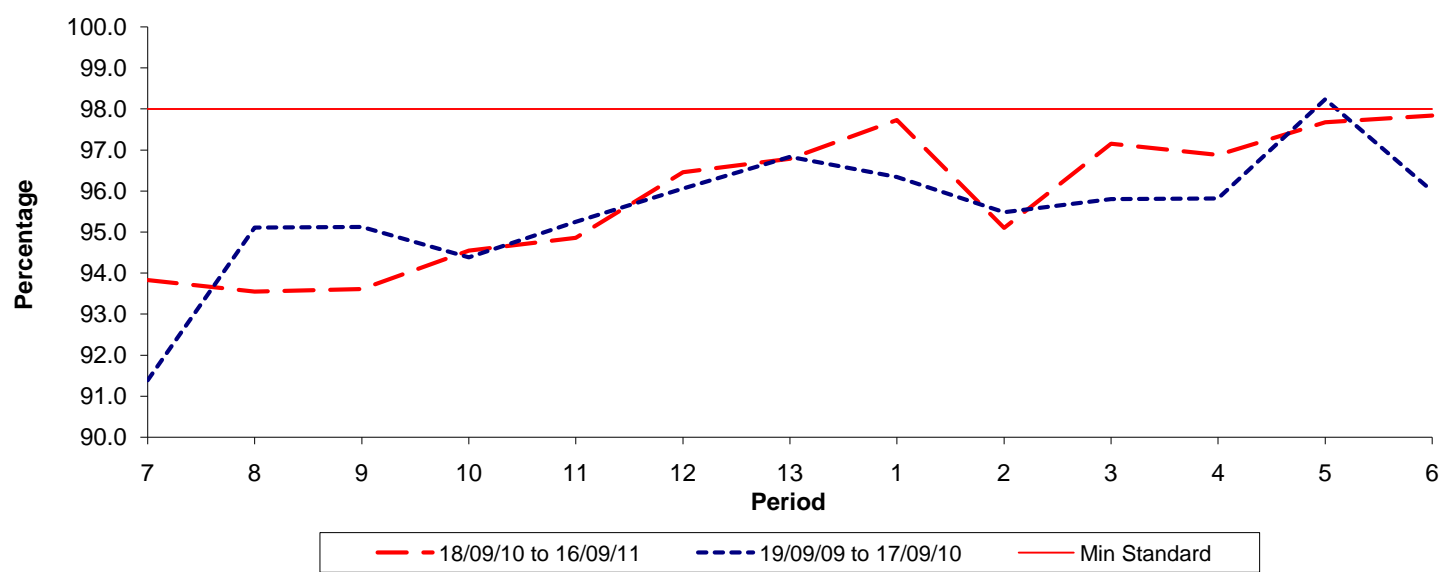


Date Range / Period	7	8	9	10	11	12	13	1	2	3	4	5	6
18/09/10 to 16/09/11	0.76	1.00	1.22	1.36	1.42	1.45	1.26	0.79	0.97	0.93	0.97	0.88	0.80
19/09/09 to 17/09/10	1.35	1.71	1.58	1.33	0.93	0.97	0.97	0.84	1.20	1.29	1.45	1.03	0.87
Min Standard	1.30	1.30	1.30	1.30	1.30	1.30	1.30	1.30	1.30	1.30	1.30	1.30	1.30

Excess Waiting Time figures are based on 12 weeks data

Kilometre Performance

% Kilometres Operated



Date Range / Period	7	8	9	10	11	12	13	1	2	3	4	5	6
18/09/10 to 16/09/11	93.83	93.55	93.61	94.55	94.86	96.46	96.79	97.73	95.10	97.15	96.88	97.68	97.84
19/09/09 to 17/09/10	91.39	95.11	95.12	94.38	95.25	96.06	96.84	96.34	95.48	95.80	95.82	98.24	96.00
Min Standard	98.00	98.00	98.00	98.00	98.00	98.00	98.00	98.00	98.00	98.00	98.00	98.00	98.00

Kilometre figures are based on 4 weeks data