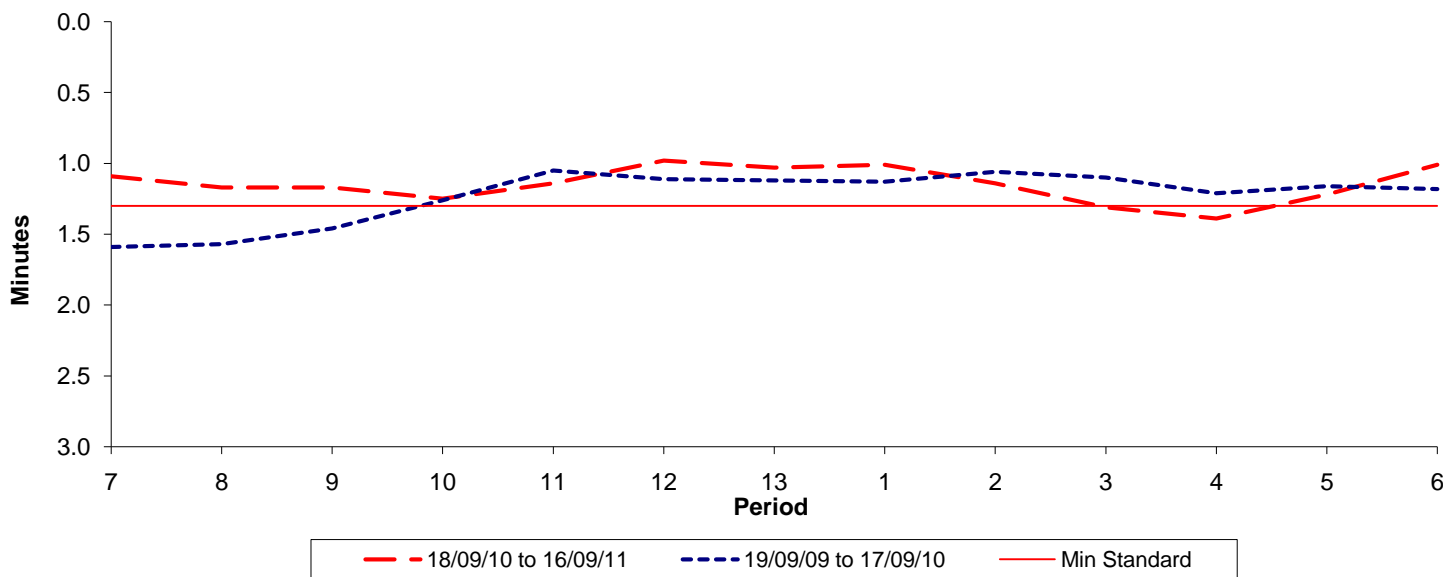




**Reliability Performance ( High Frequency )**

**Excess Waiting Time (minutes)**

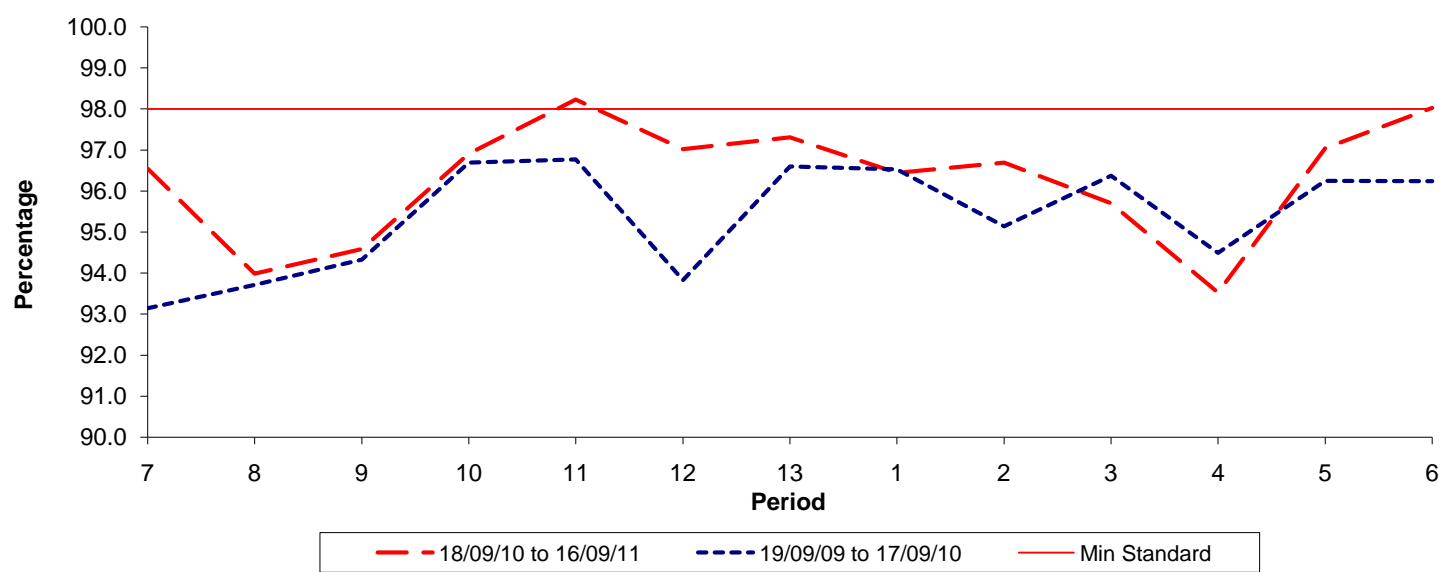


Date Range / Period	7	8	9	10	11	12	13	1	2	3	4	5	6
18/09/10 to 16/09/11	1.09	1.17	1.17	1.25	1.14	0.98	1.03	1.01	1.14	1.31	1.39	1.22	1.01
19/09/09 to 17/09/10	1.59	1.57	1.46	1.26	1.05	1.11	1.12	1.13	1.06	1.10	1.21	1.16	1.18
Min Standard	1.30	1.30	1.30	1.30	1.30	1.30	1.30	1.30	1.30	1.30	1.30	1.30	1.30

Excess Waiting Time figures are based on 12 weeks data

**Kilometre Performance**

**% Kilometres Operated**



Date Range / Period	7	8	9	10	11	12	13	1	2	3	4	5	6
18/09/10 to 16/09/11	96.54	93.98	94.58	96.91	98.23	97.02	97.31	96.44	96.69	95.70	93.52	97.04	98.03
19/09/09 to 17/09/10	93.14	93.71	94.33	96.69	96.77	93.83	96.60	96.53	95.14	96.37	94.49	96.25	96.24
Min Standard	98.00	98.00	98.00	98.00	98.00	98.00	98.00	98.00	98.00	98.00	98.00	98.00	98.00

Kilometre figures are based on 4 weeks data