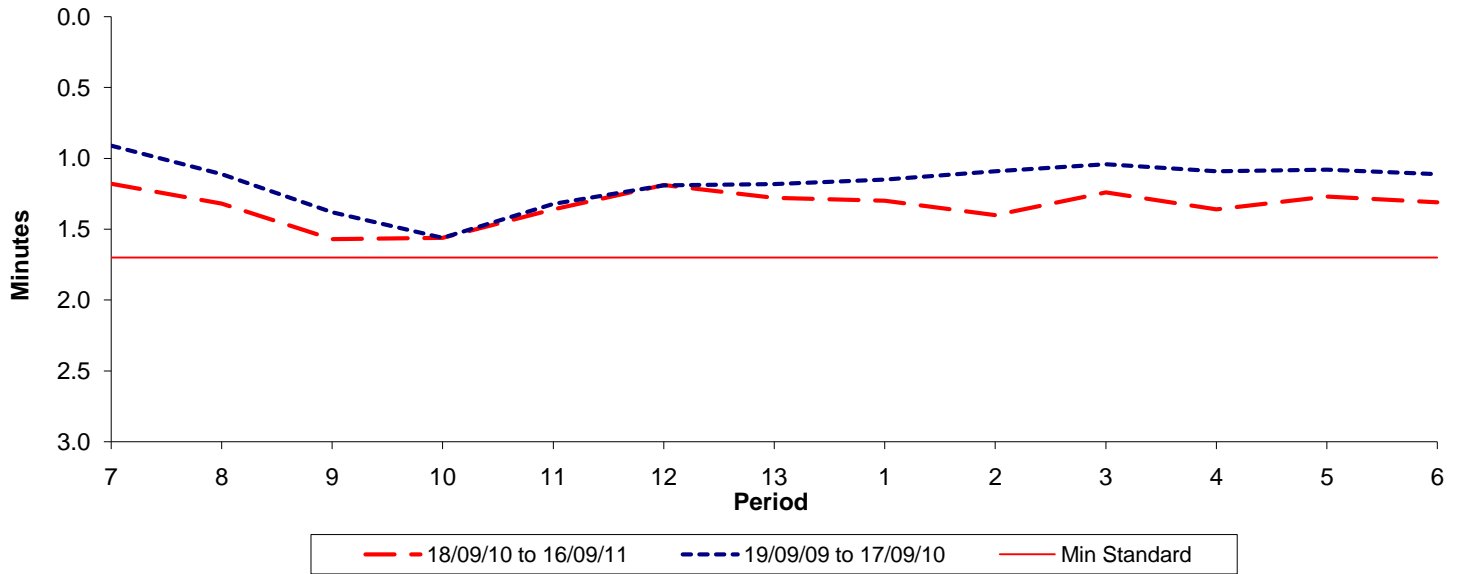




**Reliability Performance ( High Frequency )**

**Excess Waiting Time (minutes)**

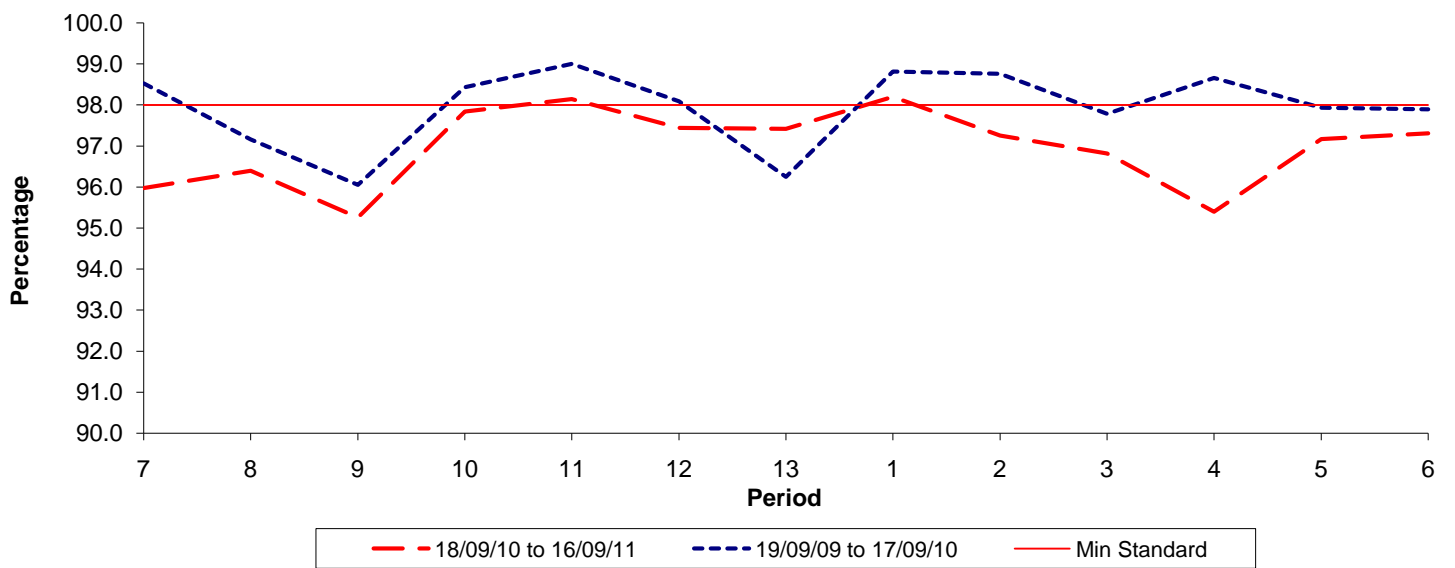


Date Range / Period	7	8	9	10	11	12	13	1	2	3	4	5	6
18/09/10 to 16/09/11	1.18	1.32	1.57	1.56	1.36	1.19	1.28	1.30	1.40	1.24	1.36	1.27	1.31
19/09/09 to 17/09/10	0.91	1.11	1.38	1.56	1.32	1.19	1.18	1.15	1.09	1.04	1.09	1.08	1.11
Min Standard	1.70	1.70	1.70	1.70	1.70	1.70	1.70	1.70	1.70	1.70	1.70	1.70	1.70

Excess Waiting Time figures are based on 12 weeks data

**Kilometre Performance**

**% Kilometres Operated**



Date Range / Period	7	8	9	10	11	12	13	1	2	3	4	5	6
18/09/10 to 16/09/11	95.97	96.40	95.26	97.84	98.15	97.45	97.42	98.20	97.26	96.82	95.40	97.17	97.31
19/09/09 to 17/09/10	98.53	97.16	96.05	98.44	99.01	98.09	96.25	98.82	98.76	97.78	98.66	97.94	97.90
Min Standard	98.00	98.00	98.00	98.00	98.00	98.00	98.00	98.00	98.00	98.00	98.00	98.00	98.00

Kilometre figures are based on 4 weeks data