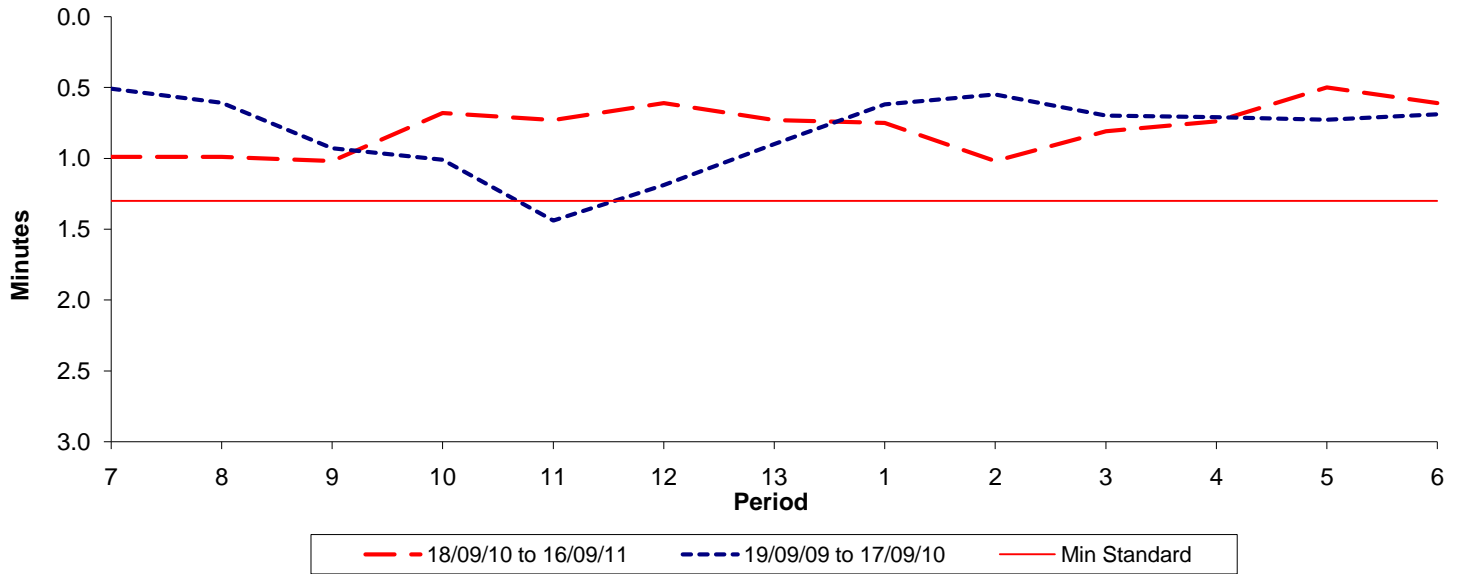




Reliability Performance (High Frequency)

Excess Waiting Time (minutes)

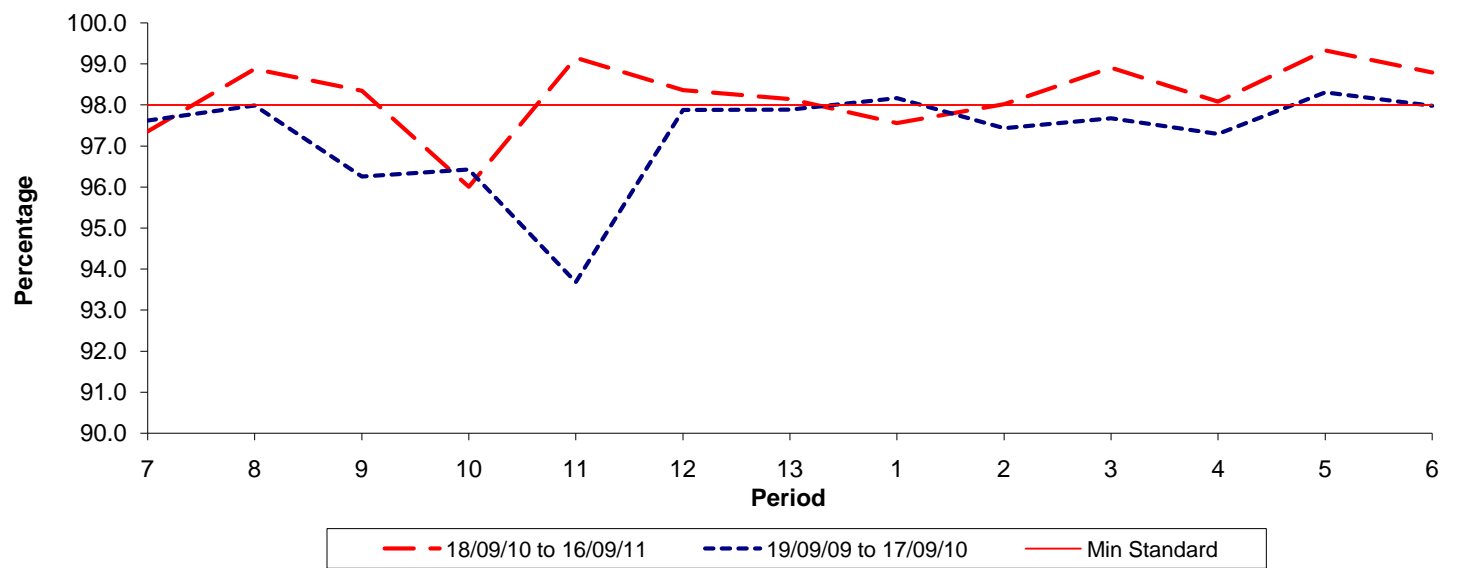


Date Range / Period	7	8	9	10	11	12	13	1	2	3	4	5	6
18/09/10 to 16/09/11	0.99	0.99	1.02	0.68	0.73	0.61	0.73	0.75	1.02	0.81	0.74	0.50	0.61
19/09/09 to 17/09/10	0.51	0.61	0.93	1.01	1.44	1.19	0.90	0.62	0.55	0.70	0.71	0.73	0.69
Min Standard	1.30	1.30	1.30	1.30	1.30	1.30	1.30	1.30	1.30	1.30	1.30	1.30	1.30

Excess Waiting Time figures are based on 12 weeks data

Kilometre Performance

% Kilometres Operated



Date Range / Period	7	8	9	10	11	12	13	1	2	3	4	5	6
18/09/10 to 16/09/11	97.36	98.88	98.35	96.00	99.15	98.36	98.14	97.56	98.02	98.91	98.08	99.33	98.79
19/09/09 to 17/09/10	97.62	97.99	96.25	96.43	93.68	97.88	97.88	98.17	97.43	97.67	97.29	98.31	97.97
Min Standard	98.00	98.00	98.00	98.00	98.00	98.00	98.00	98.00	98.00	98.00	98.00	98.00	98.00

Kilometre figures are based on 4 weeks data