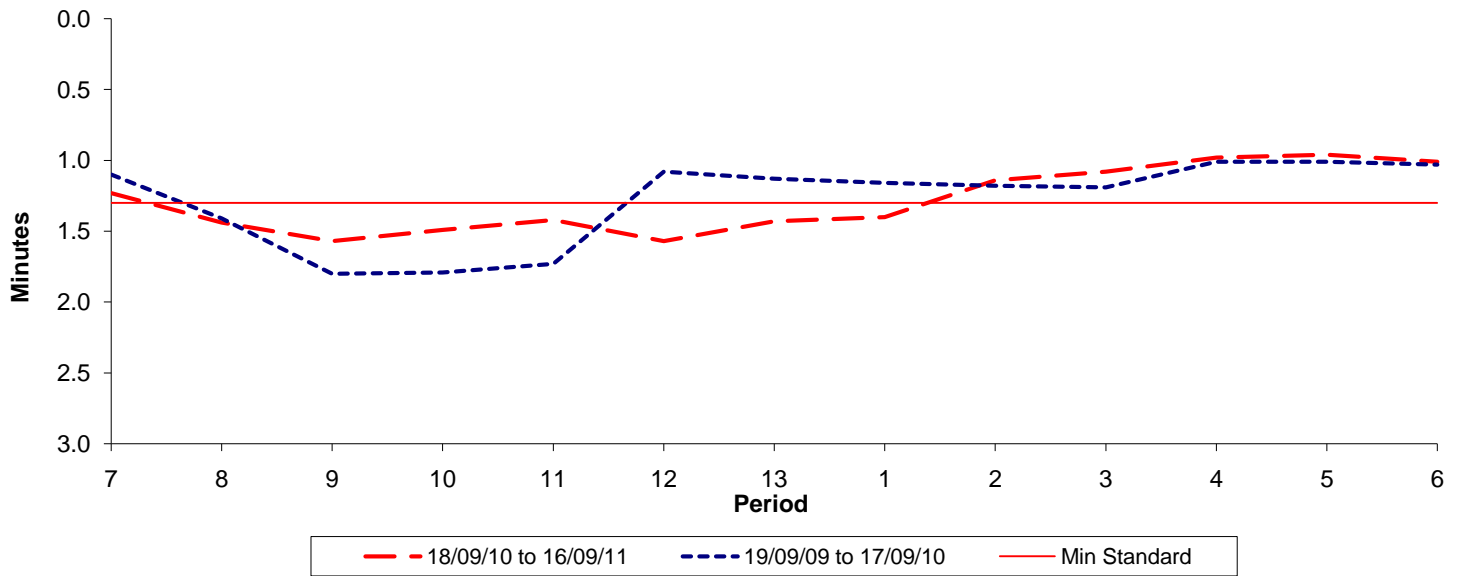




Reliability Performance (High Frequency)

Excess Waiting Time (minutes)

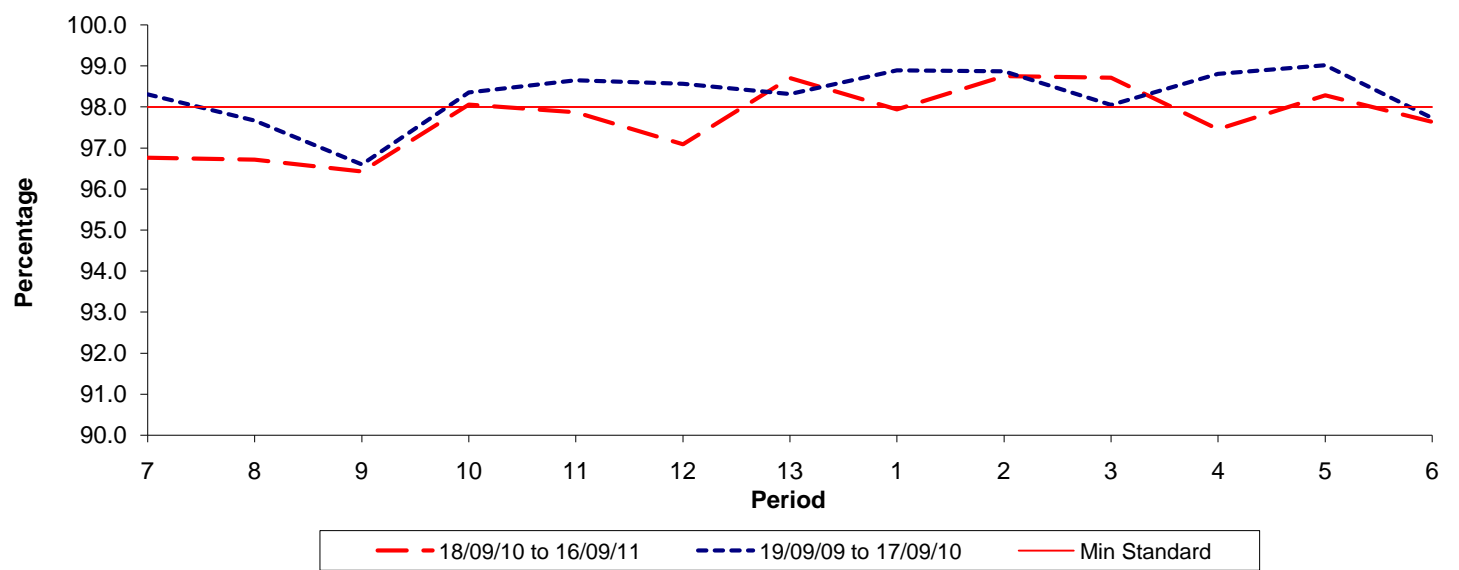


Date Range / Period	7	8	9	10	11	12	13	1	2	3	4	5	6
18/09/10 to 16/09/11	1.23	1.44	1.57	1.49	1.42	1.57	1.43	1.40	1.14	1.08	0.98	0.96	1.01
19/09/09 to 17/09/10	1.10	1.41	1.80	1.79	1.73	1.08	1.13	1.16	1.18	1.19	1.01	1.01	1.03
Min Standard	1.30	1.30	1.30	1.30	1.30	1.30	1.30	1.30	1.30	1.30	1.30	1.30	1.30

Excess Waiting Time figures are based on 12 weeks data

Kilometre Performance

% Kilometres Operated



Date Range / Period	7	8	9	10	11	12	13	1	2	3	4	5	6
18/09/10 to 16/09/11	96.76	96.72	96.43	98.06	97.87	97.09	98.70	97.94	98.75	98.71	97.46	98.28	97.64
19/09/09 to 17/09/10	98.31	97.67	96.60	98.35	98.65	98.56	98.31	98.89	98.87	98.05	98.80	99.02	97.73
Min Standard	98.00	98.00	98.00	98.00	98.00	98.00	98.00	98.00	98.00	98.00	98.00	98.00	98.00

Kilometre figures are based on 4 weeks data