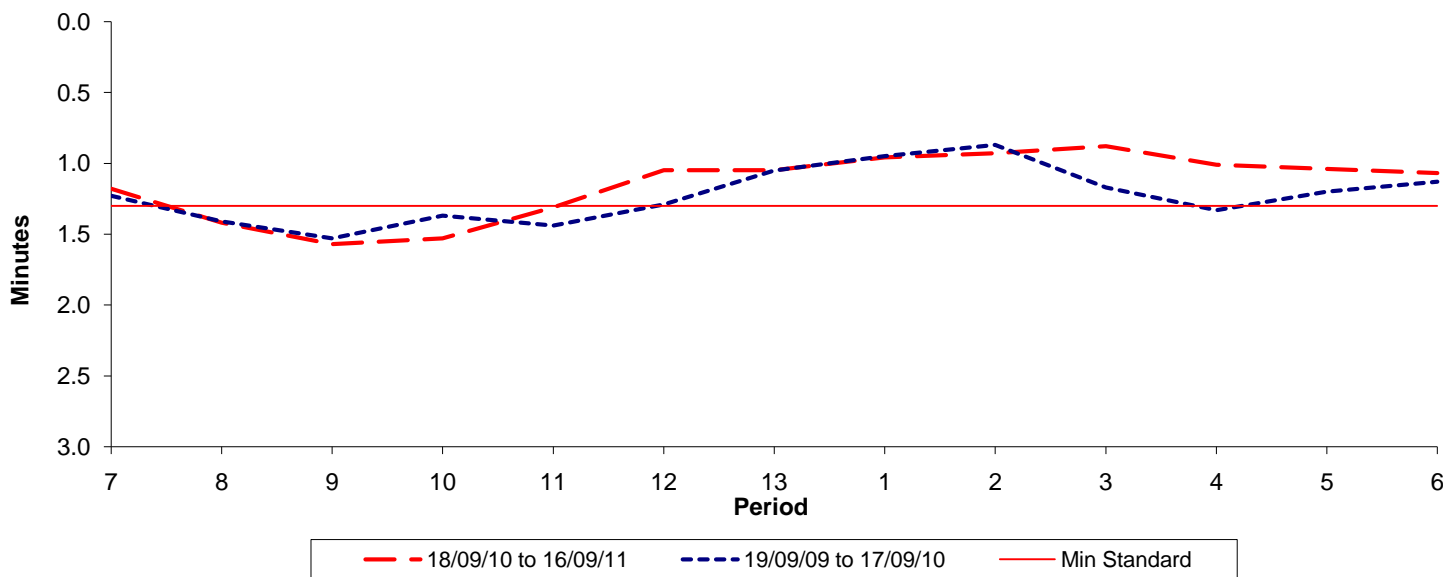




Reliability Performance (High Frequency)

Excess Waiting Time (minutes)

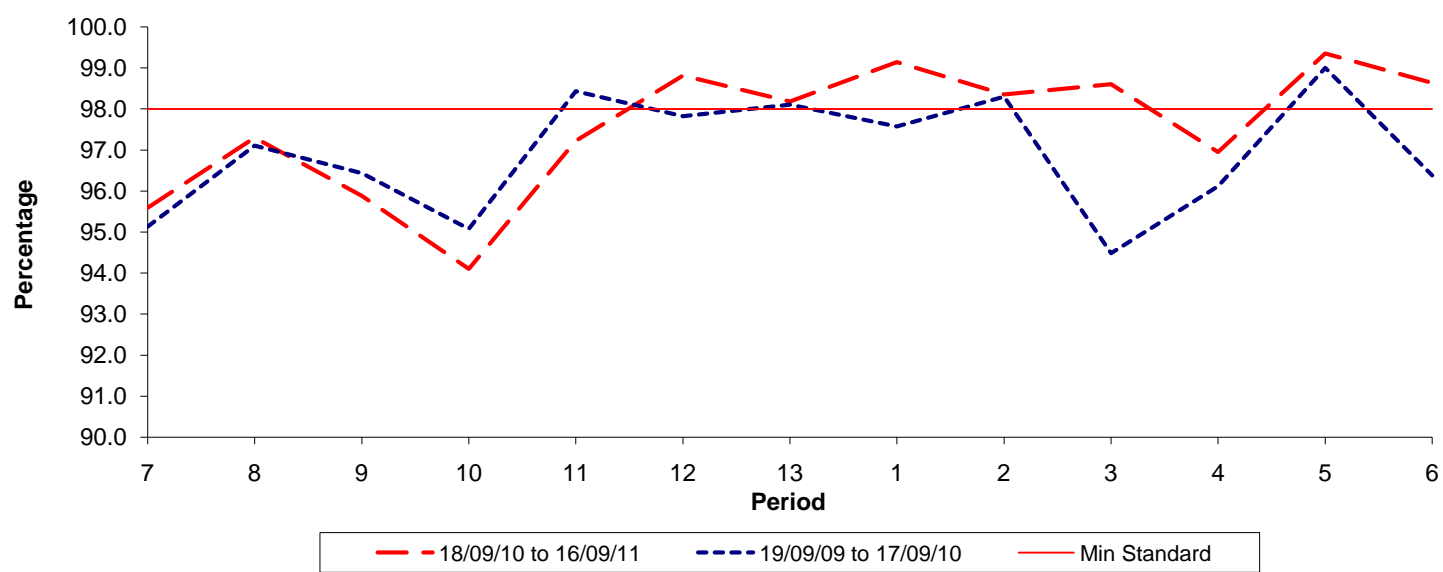


Date Range / Period	7	8	9	10	11	12	13	1	2	3	4	5	6
18/09/10 to 16/09/11	1.18	1.42	1.57	1.53	1.31	1.05	1.05	0.96	0.93	0.88	1.01	1.04	1.07
19/09/09 to 17/09/10	1.23	1.41	1.53	1.37	1.44	1.29	1.05	0.95	0.87	1.17	1.33	1.20	1.13
Min Standard	1.30	1.30	1.30	1.30	1.30	1.30	1.30	1.30	1.30	1.30	1.30	1.30	1.30

Excess Waiting Time figures are based on 12 weeks data

Kilometre Performance

% Kilometres Operated



Date Range / Period	7	8	9	10	11	12	13	1	2	3	4	5	6
18/09/10 to 16/09/11	95.59	97.30	95.88	94.10	97.22	98.81	98.18	99.14	98.35	98.60	96.95	99.35	98.63
19/09/09 to 17/09/10	95.13	97.10	96.43	95.07	98.43	97.82	98.10	97.57	98.30	94.48	96.11	99.00	96.38
Min Standard	98.00	98.00	98.00	98.00	98.00	98.00	98.00	98.00	98.00	98.00	98.00	98.00	98.00

Kilometre figures are based on 4 weeks data