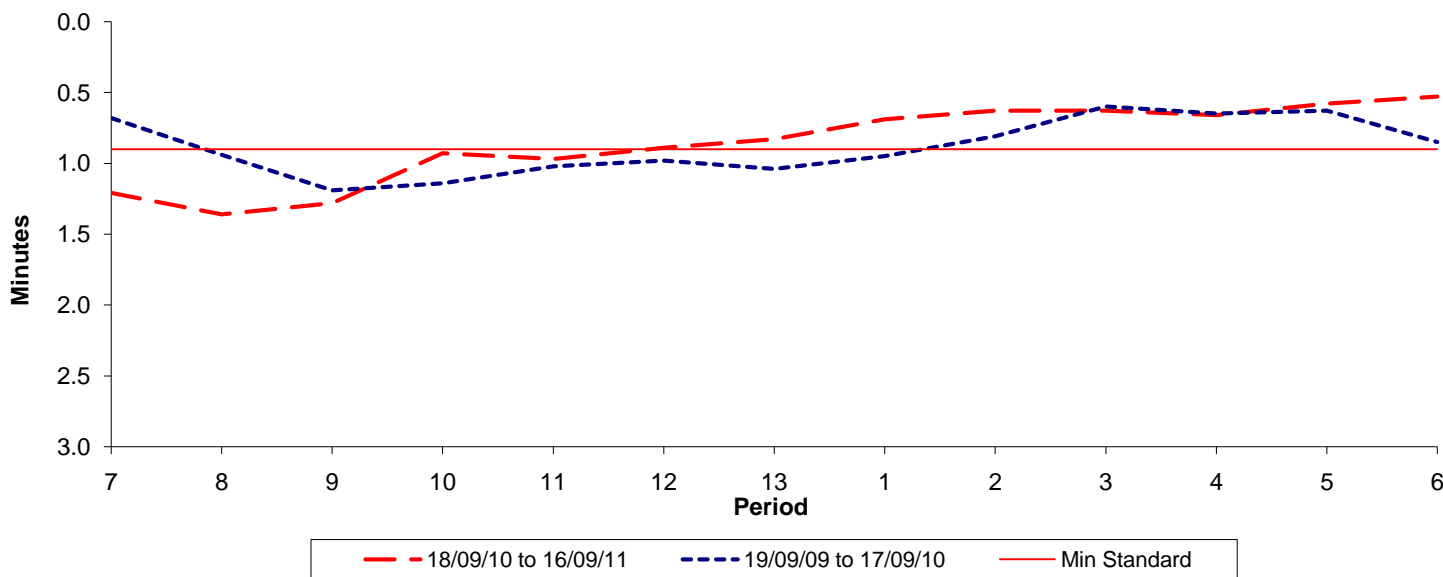




Reliability Performance (High Frequency)

Excess Waiting Time (minutes)

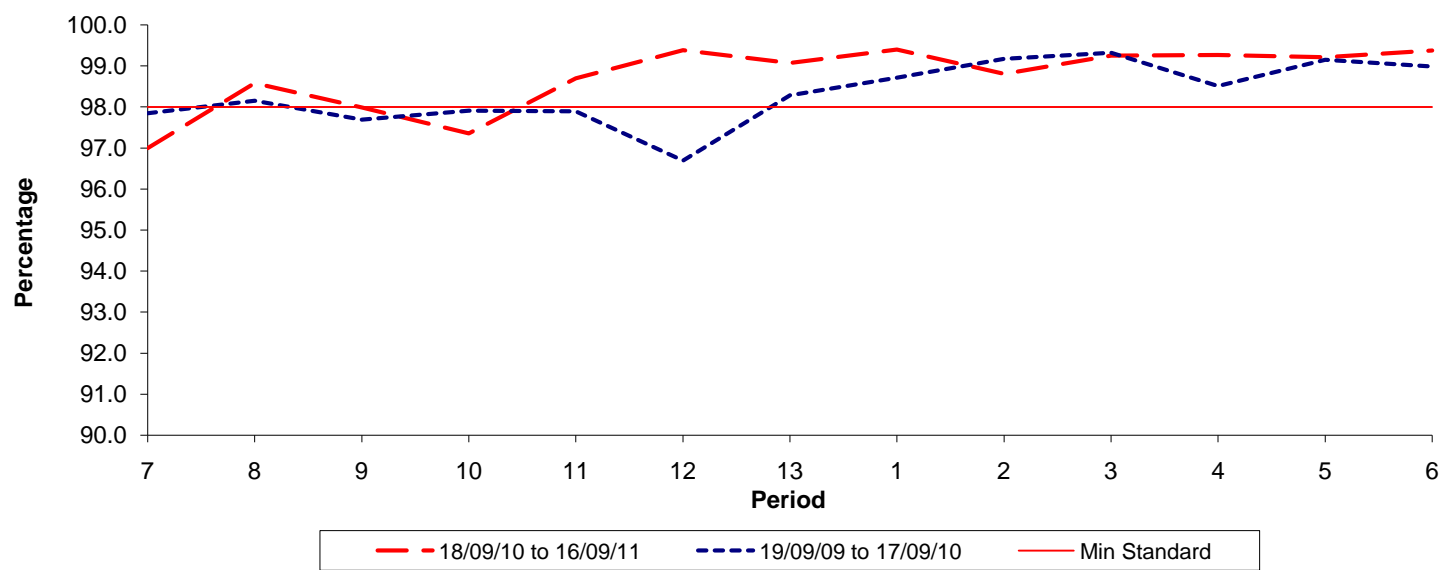


Date Range / Period	7	8	9	10	11	12	13	1	2	3	4	5	6
18/09/10 to 16/09/11	1.21	1.36	1.28	0.93	0.97	0.89	0.83	0.69	0.63	0.63	0.66	0.58	0.53
19/09/09 to 17/09/10	0.68	0.94	1.19	1.14	1.02	0.98	1.04	0.95	0.81	0.60	0.65	0.63	0.85
Min Standard	0.90	0.90	0.90	0.90	0.90	0.90	0.90	0.90	0.90	0.90	0.90	0.90	0.90

Excess Waiting Time figures are based on 12 weeks data

Kilometre Performance

% Kilometres Operated



Date Range / Period	7	8	9	10	11	12	13	1	2	3	4	5	6
18/09/10 to 16/09/11	96.99	98.58	97.99	97.36	98.70	99.39	99.07	99.40	98.81	99.25	99.27	99.21	99.38
19/09/09 to 17/09/10	97.85	98.15	97.69	97.91	97.89	96.69	98.29	98.71	99.17	99.32	98.51	99.15	98.98
Min Standard	98.00	98.00	98.00	98.00	98.00	98.00	98.00	98.00	98.00	98.00	98.00	98.00	98.00

Kilometre figures are based on 4 weeks data