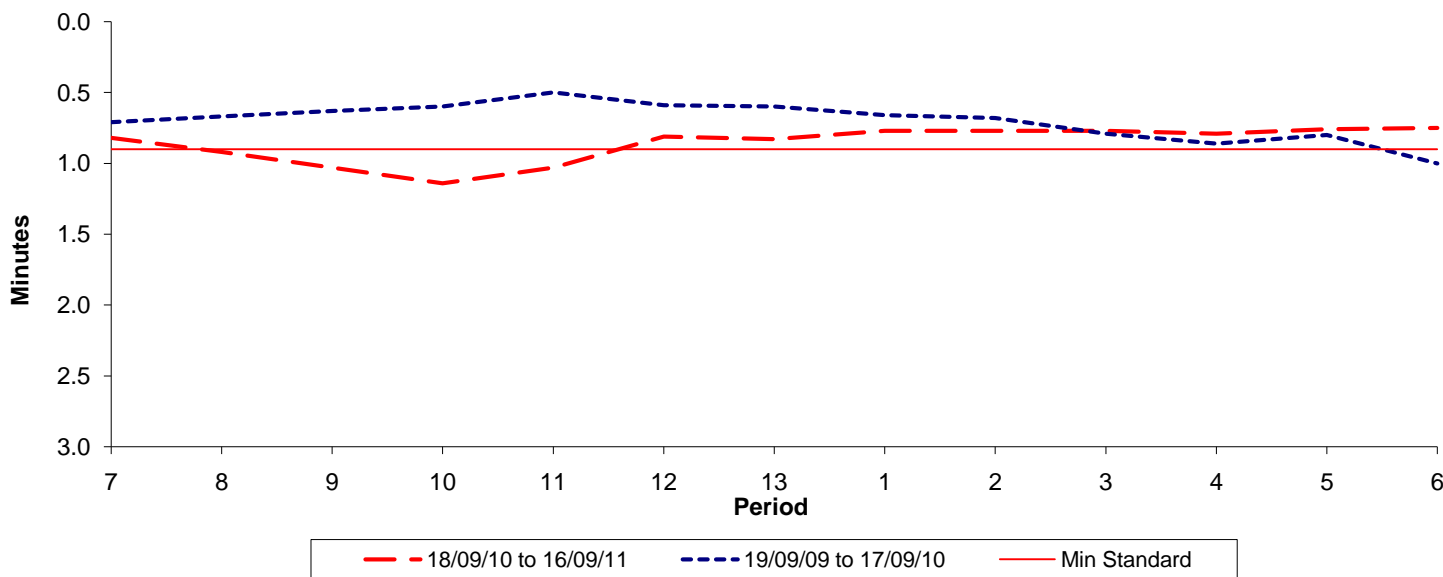




Reliability Performance (High Frequency)

Excess Waiting Time (minutes)

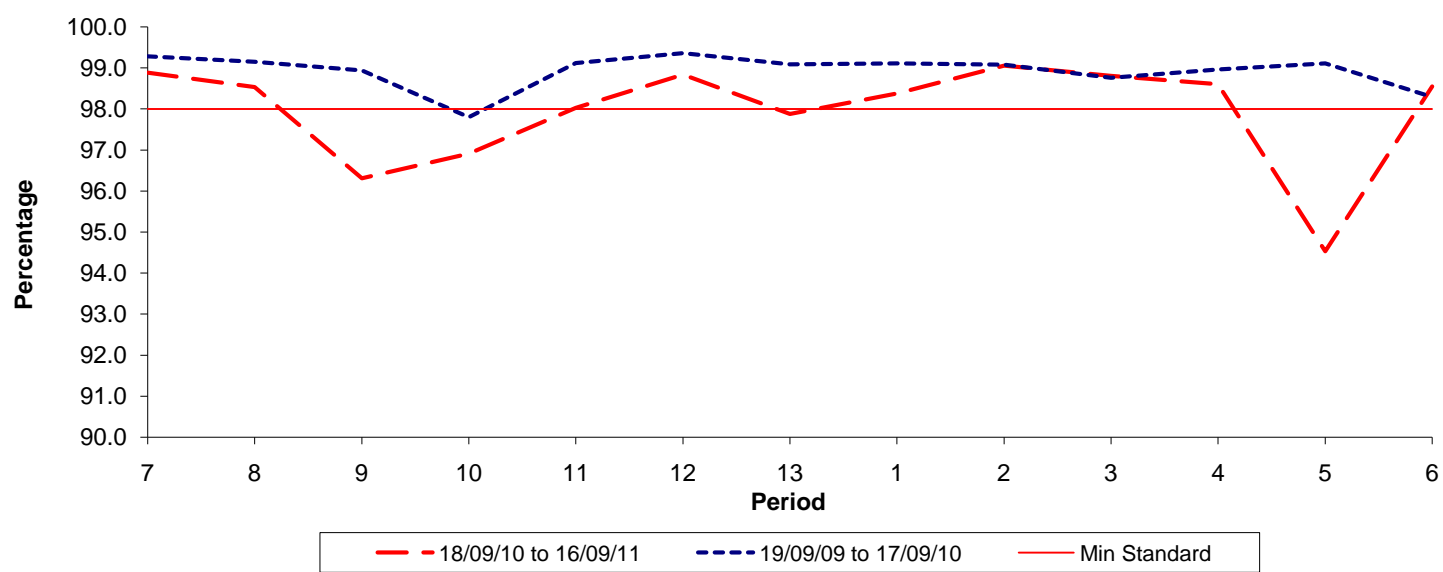


Date Range / Period	7	8	9	10	11	12	13	1	2	3	4	5	6
18/09/10 to 16/09/11	0.82	0.92	1.03	1.14	1.03	0.81	0.83	0.77	0.77	0.77	0.79	0.76	0.75
19/09/09 to 17/09/10	0.71	0.67	0.63	0.60	0.50	0.59	0.60	0.66	0.68	0.79	0.86	0.80	1.00
Min Standard	0.90	0.90	0.90	0.90	0.90	0.90	0.90	0.90	0.90	0.90	0.90	0.90	0.90

Excess Waiting Time figures are based on 12 weeks data

Kilometre Performance

% Kilometres Operated



Date Range / Period	7	8	9	10	11	12	13	1	2	3	4	5	6
18/09/10 to 16/09/11	98.89	98.54	96.31	96.91	98.03	98.84	97.88	98.38	99.06	98.81	98.61	94.53	98.55
19/09/09 to 17/09/10	99.28	99.15	98.94	97.80	99.12	99.36	99.09	99.11	99.08	98.76	98.96	99.11	98.29
Min Standard	98.00	98.00	98.00	98.00	98.00	98.00	98.00	98.00	98.00	98.00	98.00	98.00	98.00

Kilometre figures are based on 4 weeks data