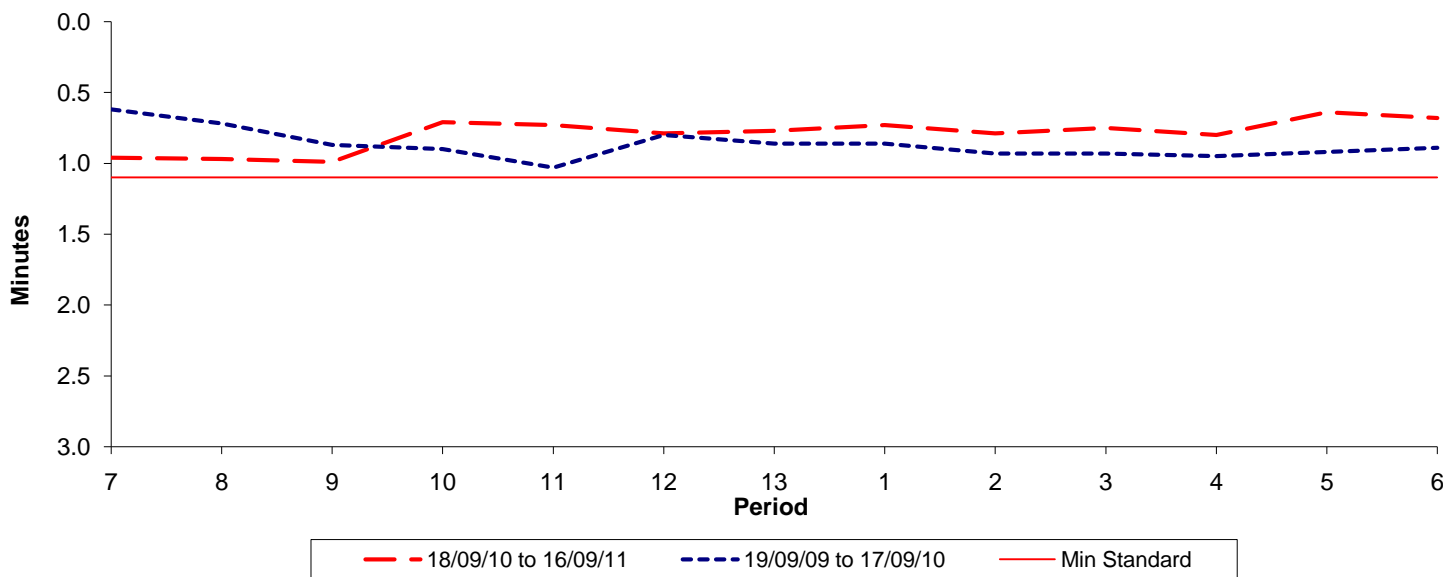




Reliability Performance (High Frequency)

Excess Waiting Time (minutes)

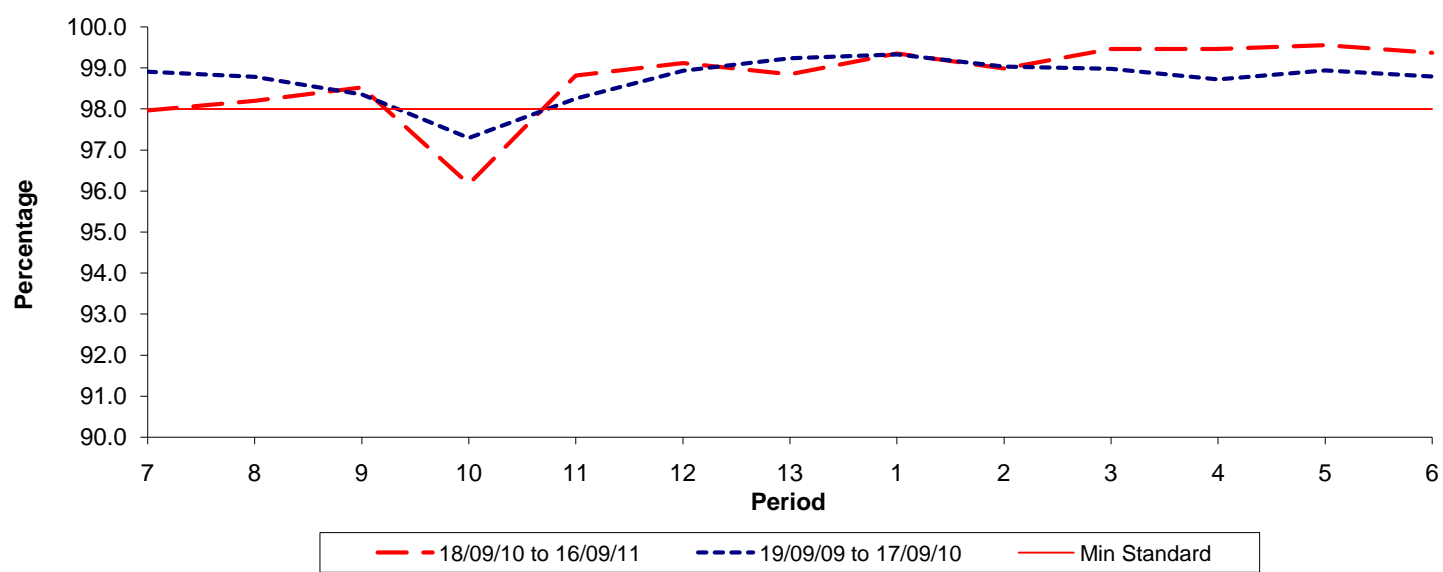


Date Range / Period	7	8	9	10	11	12	13	1	2	3	4	5	6
18/09/10 to 16/09/11	0.96	0.97	0.99	0.71	0.73	0.79	0.77	0.73	0.79	0.75	0.80	0.64	0.68
19/09/09 to 17/09/10	0.62	0.72	0.87	0.90	1.03	0.80	0.86	0.86	0.93	0.93	0.95	0.92	0.89
Min Standard	1.10	1.10	1.10	1.10	1.10	1.10	1.10	1.10	1.10	1.10	1.10	1.10	1.10

Excess Waiting Time figures are based on 12 weeks data

Kilometre Performance

% Kilometres Operated



Date Range / Period	7	8	9	10	11	12	13	1	2	3	4	5	6
18/09/10 to 16/09/11	97.97	98.20	98.53	96.17	98.82	99.12	98.85	99.36	98.99	99.47	99.47	99.56	99.37
19/09/09 to 17/09/10	98.91	98.78	98.35	97.29	98.25	98.93	99.24	99.33	99.03	98.98	98.72	98.94	98.79
Min Standard	98.00	98.00	98.00	98.00	98.00	98.00	98.00	98.00	98.00	98.00	98.00	98.00	98.00

Kilometre figures are based on 4 weeks data