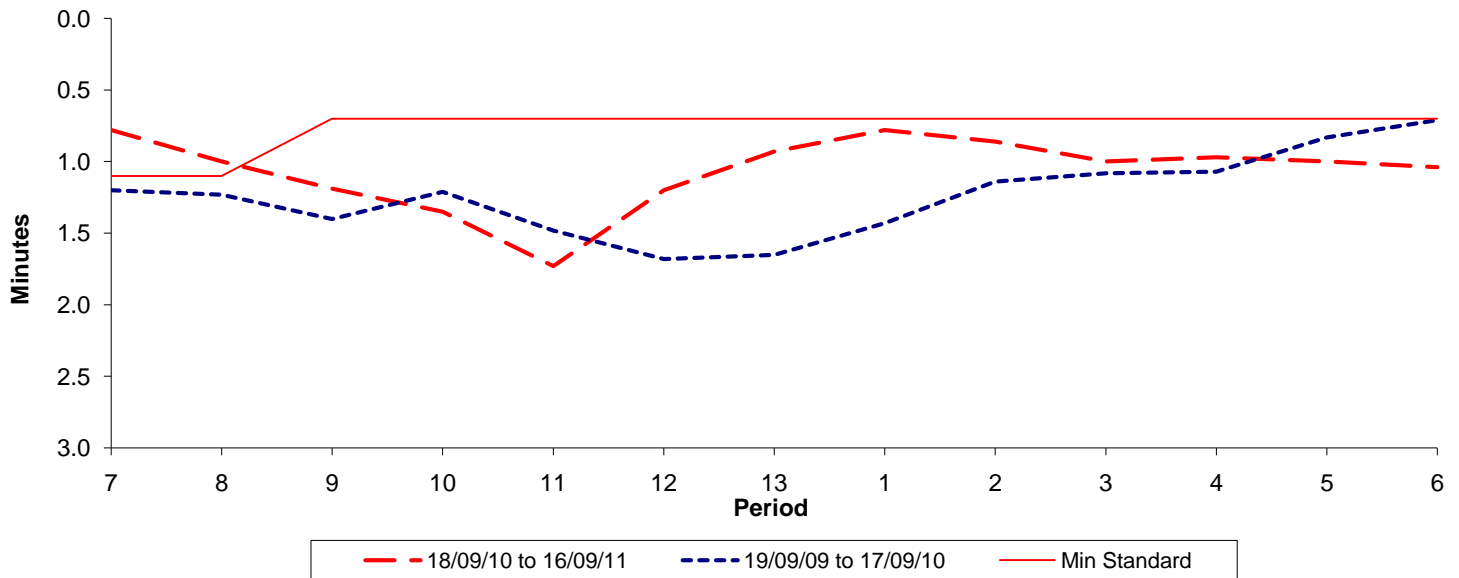




Reliability Performance (High Frequency)

Excess Waiting Time (minutes)

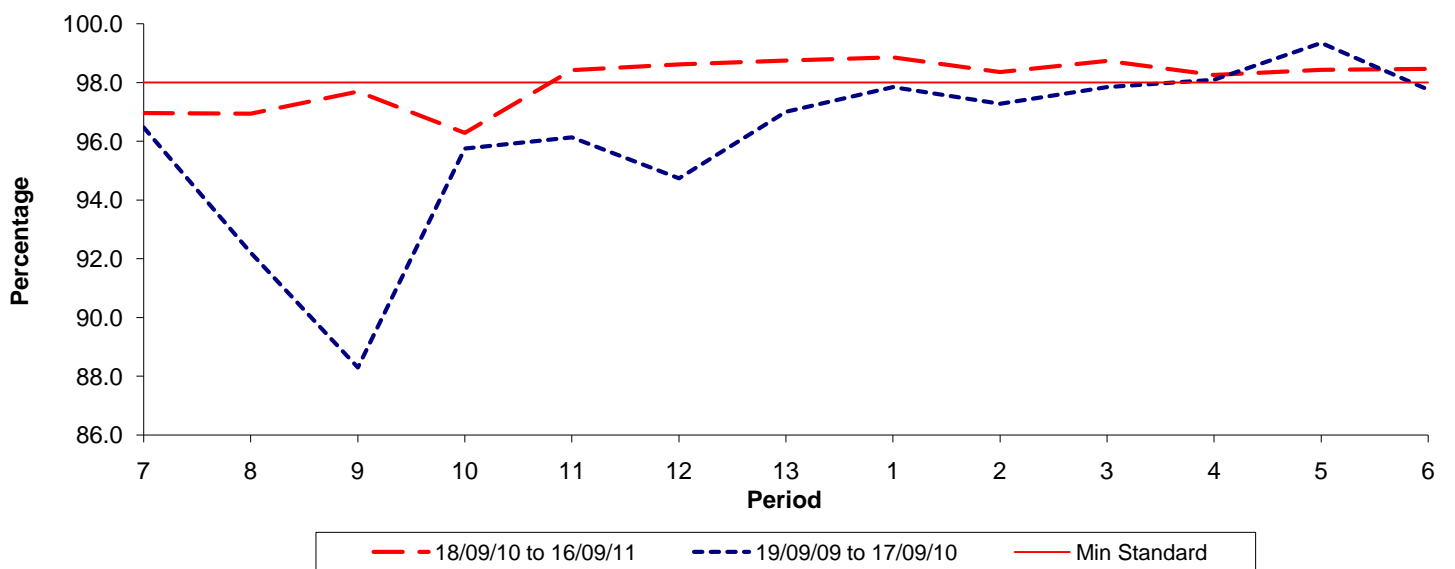


Date Range / Period	7	8	9	10	11	12	13	1	2	3	4	5	6
18/09/10 to 16/09/11	0.78	1.00	1.19	1.35	1.73	1.20	0.93	0.78	0.86	1.00	0.97	1.00	1.04
19/09/09 to 17/09/10	1.20	1.23	1.40	1.21	1.48	1.68	1.65	1.43	1.14	1.08	1.07	0.83	0.71
Min Standard	1.10	1.10	0.70	0.70	0.70	0.70	0.70	0.70	0.70	0.70	0.70	0.70	0.70

Excess Waiting Time figures are based on 12 weeks data

Kilometre Performance

% Kilometres Operated



Date Range / Period	7	8	9	10	11	12	13	1	2	3	4	5	6
18/09/10 to 16/09/11	96.96	96.94	97.70	96.29	98.42	98.62	98.75	98.86	98.36	98.74	98.26	98.44	98.47
19/09/09 to 17/09/10	96.47	92.21	88.30	95.75	96.14	94.74	97.01	97.85	97.28	97.85	98.10	99.35	97.76
Min Standard	98.00	98.00	98.00	98.00	98.00	98.00	98.00	98.00	98.00	98.00	98.00	98.00	98.00

Kilometre figures are based on 4 weeks data