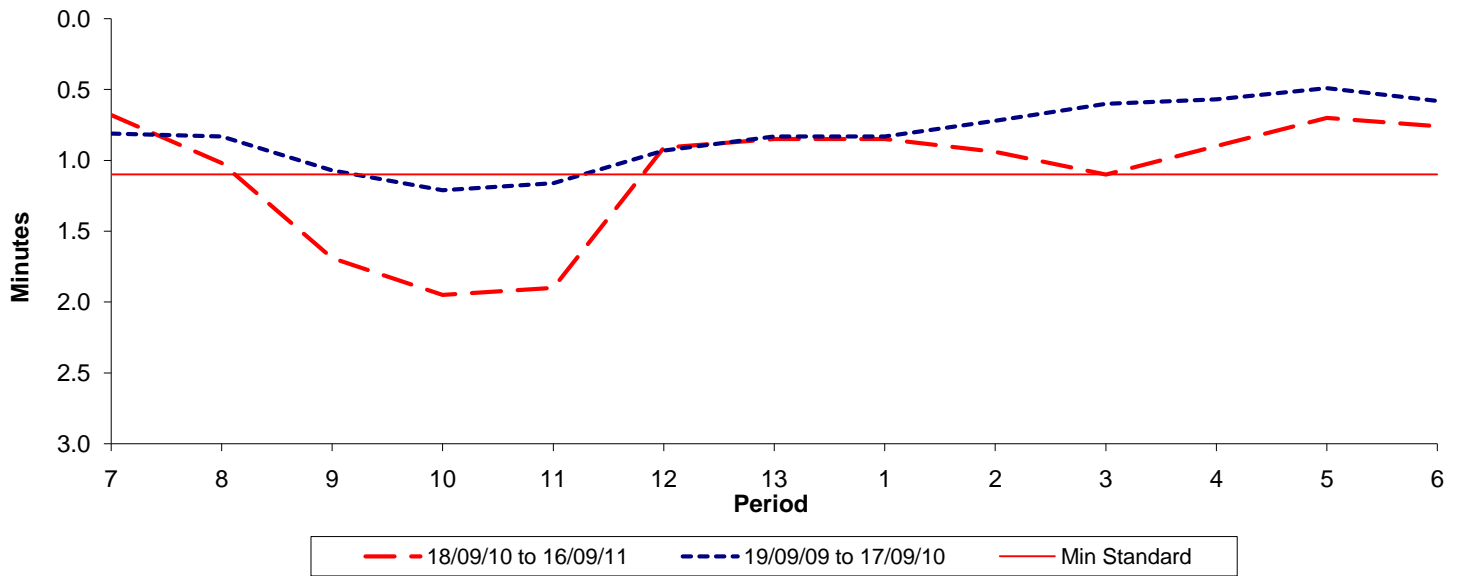




Reliability Performance (High Frequency)

Excess Waiting Time (minutes)

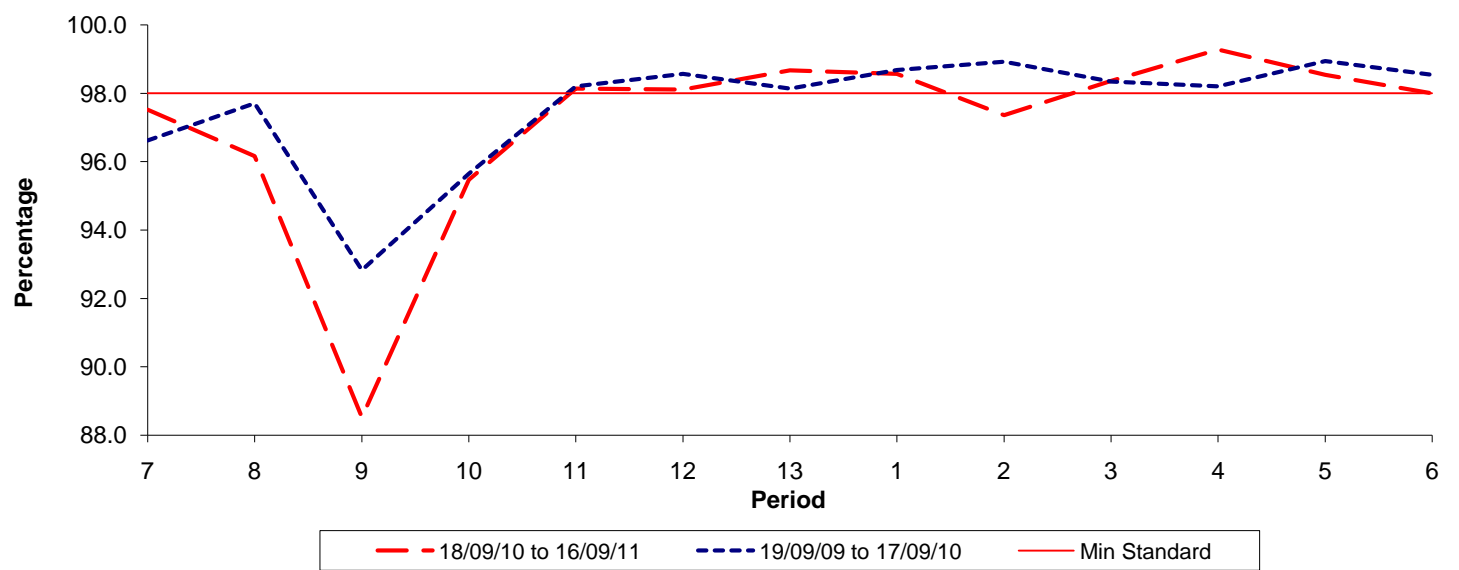


Date Range / Period	7	8	9	10	11	12	13	1	2	3	4	5	6
18/09/10 to 16/09/11	0.68	1.02	1.69	1.95	1.90	0.91	0.85	0.85	0.94	1.10	0.90	0.70	0.76
19/09/09 to 17/09/10	0.81	0.83	1.07	1.21	1.16	0.93	0.83	0.83	0.72	0.60	0.57	0.49	0.58
Min Standard	1.10	1.10	1.10	1.10	1.10	1.10	1.10	1.10	1.10	1.10	1.10	1.10	1.10

Excess Waiting Time figures are based on 12 weeks data

Kilometre Performance

% Kilometres Operated



Date Range / Period	7	8	9	10	11	12	13	1	2	3	4	5	6
18/09/10 to 16/09/11	97.52	96.16	88.52	95.47	98.13	98.11	98.67	98.57	97.36	98.36	99.28	98.54	98.00
19/09/09 to 17/09/10	96.62	97.71	92.83	95.65	98.21	98.57	98.14	98.68	98.93	98.35	98.20	98.95	98.54
Min Standard	98.00	98.00	98.00	98.00	98.00	98.00	98.00	98.00	98.00	98.00	98.00	98.00	98.00

Kilometre figures are based on 4 weeks data