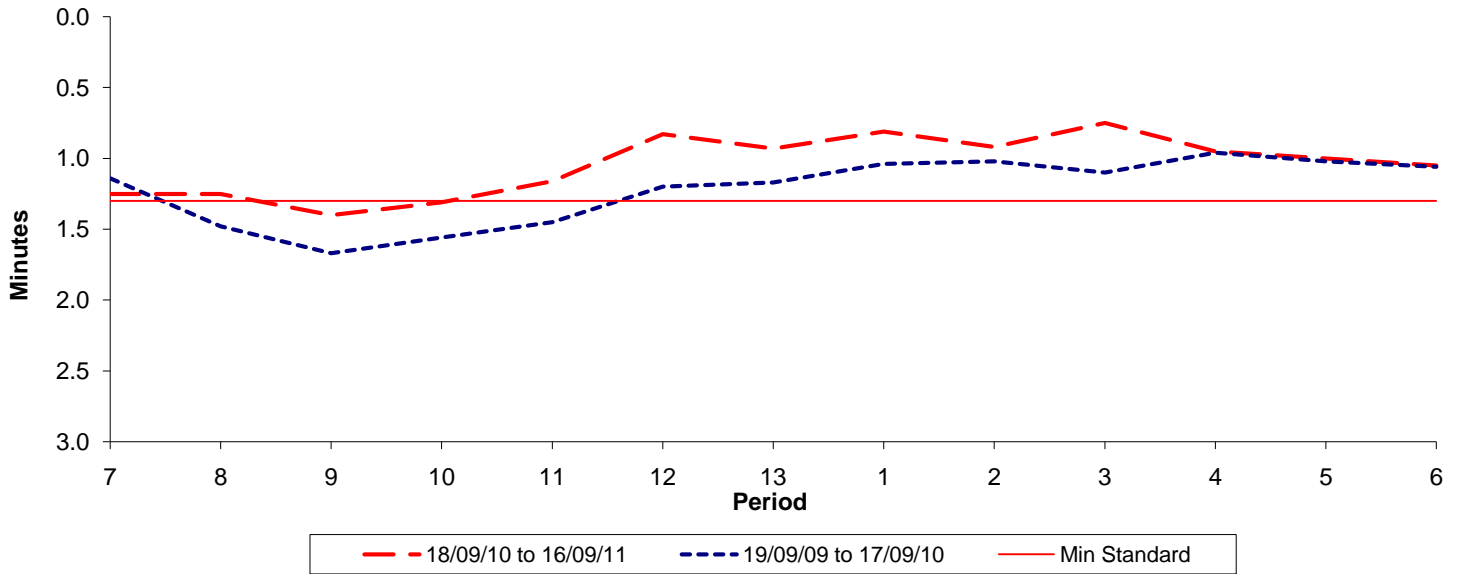




Reliability Performance (High Frequency)

Excess Waiting Time (minutes)

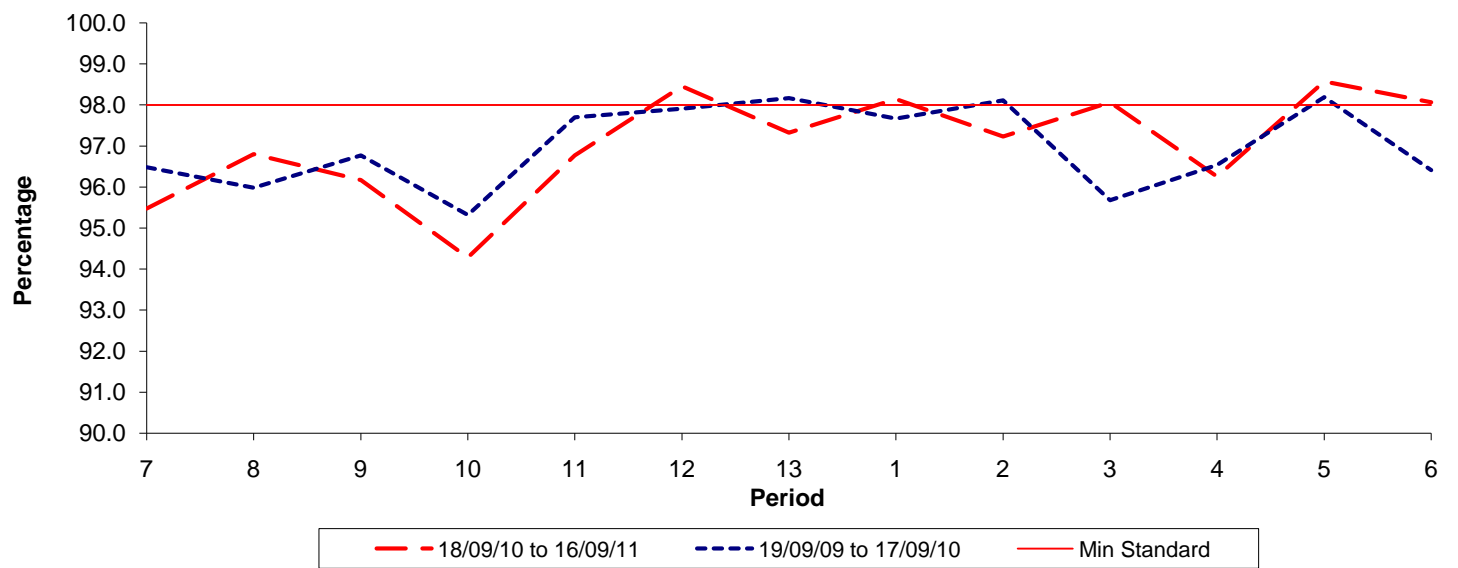


Date Range / Period	7	8	9	10	11	12	13	1	2	3	4	5	6
18/09/10 to 16/09/11	1.25	1.25	1.40	1.31	1.16	0.83	0.93	0.81	0.92	0.75	0.95	1.00	1.05
19/09/09 to 17/09/10	1.14	1.48	1.67	1.56	1.45	1.20	1.17	1.04	1.02	1.10	0.96	1.02	1.06
Min Standard	1.30	1.30	1.30	1.30	1.30	1.30	1.30	1.30	1.30	1.30	1.30	1.30	1.30

Excess Waiting Time figures are based on 12 weeks data

Kilometre Performance

% Kilometres Operated



Date Range / Period	7	8	9	10	11	12	13	1	2	3	4	5	6
18/09/10 to 16/09/11	95.47	96.80	96.17	94.28	96.77	98.45	97.32	98.14	97.23	98.06	96.25	98.57	98.06
19/09/09 to 17/09/10	96.48	95.98	96.77	95.32	97.70	97.91	98.17	97.67	98.11	95.68	96.54	98.19	96.41
Min Standard	98.00	98.00	98.00	98.00	98.00	98.00	98.00	98.00	98.00	98.00	98.00	98.00	98.00

Kilometre figures are based on 4 weeks data