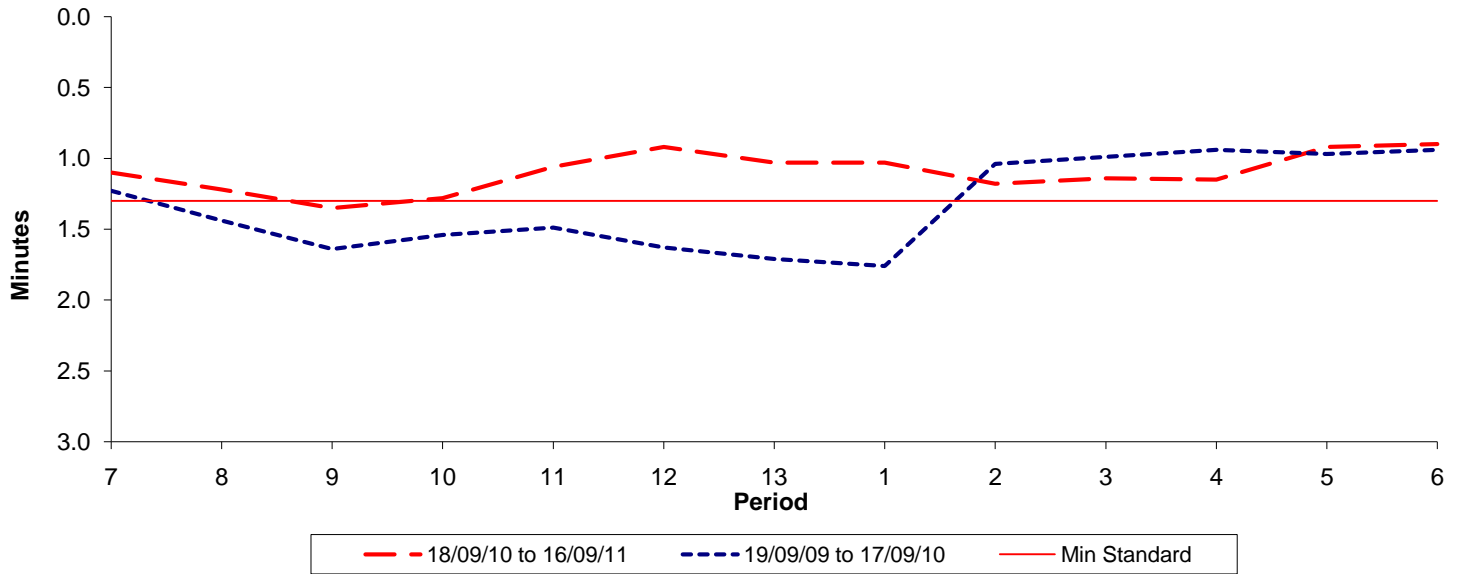




Reliability Performance (High Frequency)

Excess Waiting Time (minutes)

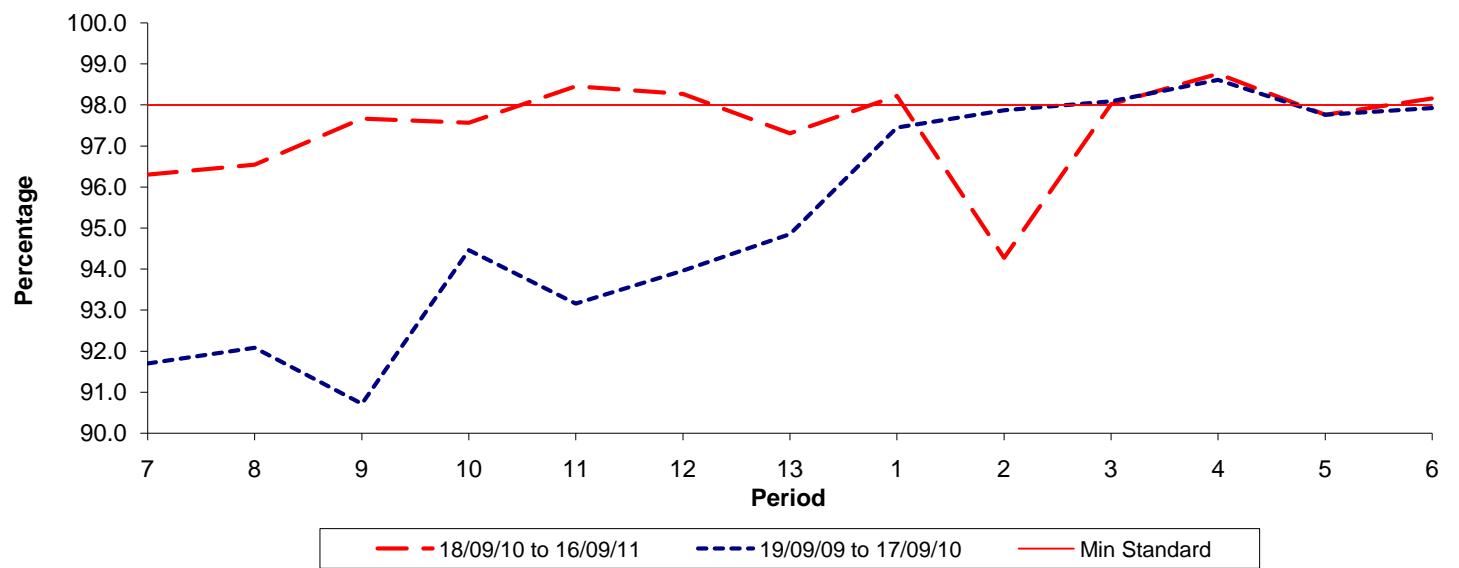


Date Range / Period	7	8	9	10	11	12	13	1	2	3	4	5	6
18/09/10 to 16/09/11	1.10	1.22	1.35	1.28	1.06	0.92	1.03	1.03	1.18	1.14	1.15	0.92	0.90
19/09/09 to 17/09/10	1.23	1.44	1.64	1.54	1.49	1.63	1.71	1.76	1.04	0.99	0.94	0.97	0.94
Min Standard	1.30	1.30	1.30	1.30	1.30	1.30	1.30	1.30	1.30	1.30	1.30	1.30	1.30

Excess Waiting Time figures are based on 12 weeks data

Kilometre Performance

% Kilometres Operated



Date Range / Period	7	8	9	10	11	12	13	1	2	3	4	5	6
18/09/10 to 16/09/11	96.30	96.54	97.67	97.57	98.46	98.27	97.31	98.22	94.27	98.02	98.76	97.76	98.16
19/09/09 to 17/09/10	91.70	92.08	90.72	94.46	93.16	93.96	94.85	97.45	97.87	98.09	98.61	97.76	97.93
Min Standard	98.00	98.00	98.00	98.00	98.00	98.00	98.00	98.00	98.00	98.00	98.00	98.00	98.00

Kilometre figures are based on 4 weeks data