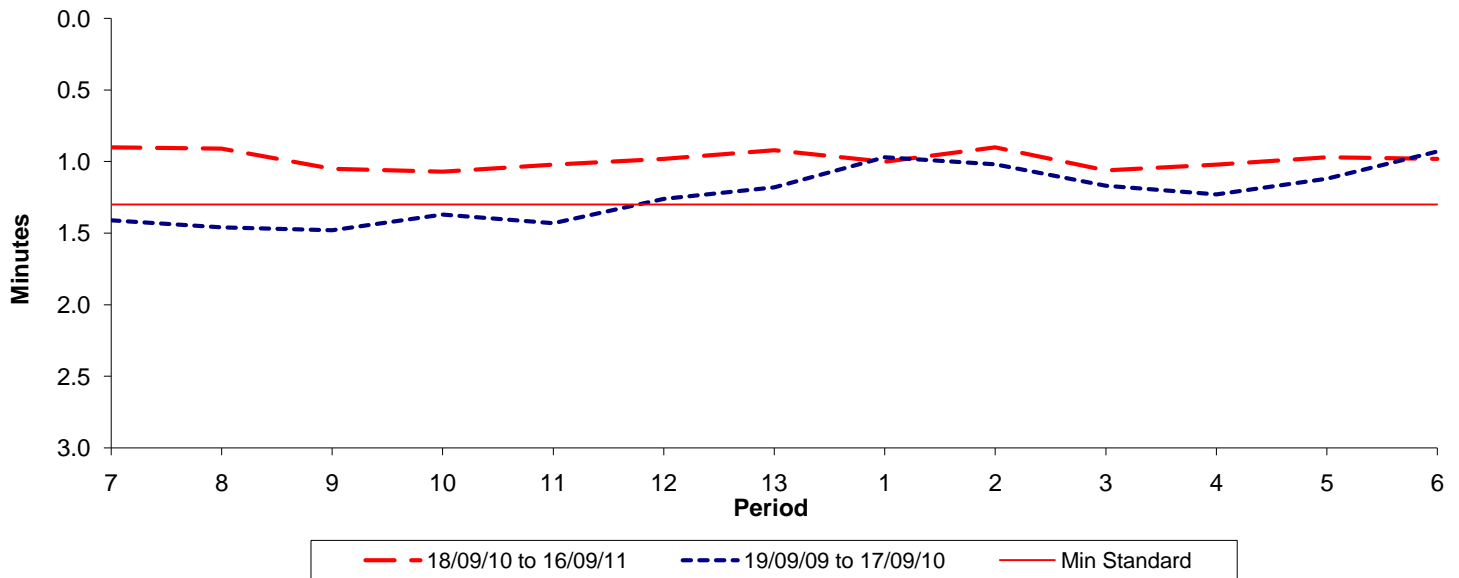




Reliability Performance (High Frequency)

Excess Waiting Time (minutes)

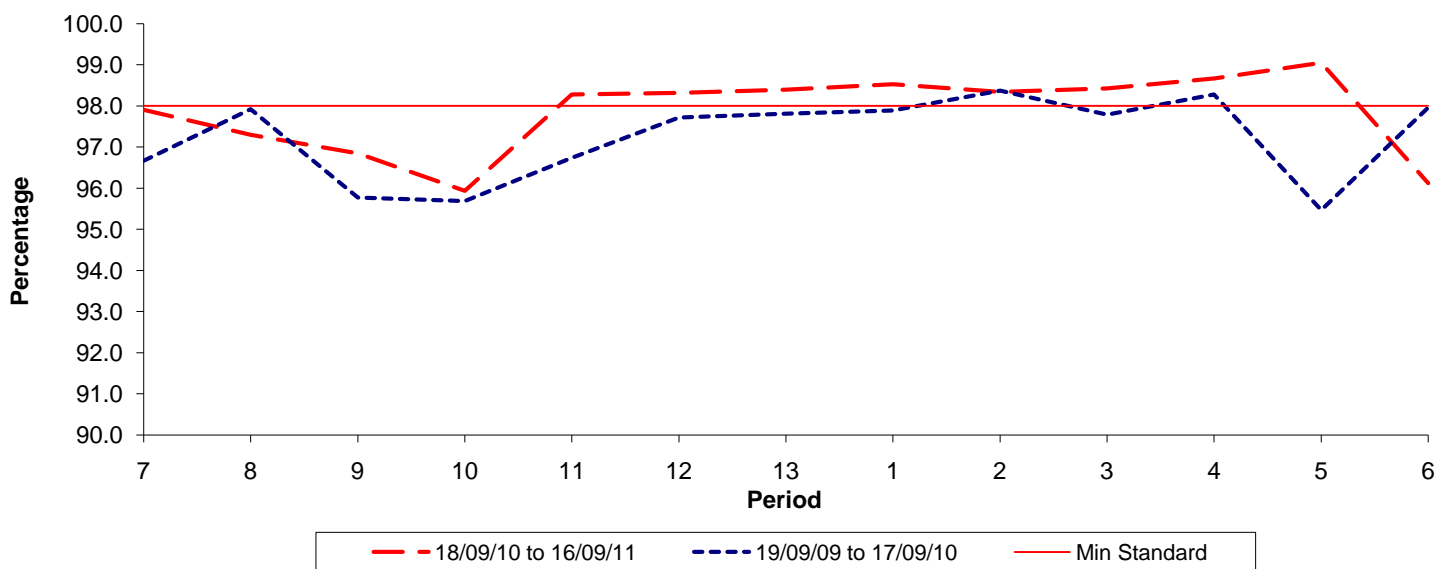


Date Range / Period	7	8	9	10	11	12	13	1	2	3	4	5	6
18/09/10 to 16/09/11	0.90	0.91	1.05	1.07	1.02	0.98	0.92	1.00	0.90	1.06	1.02	0.97	0.98
19/09/09 to 17/09/10	1.41	1.46	1.48	1.37	1.43	1.26	1.18	0.97	1.02	1.17	1.23	1.12	0.93
Min Standard	1.30	1.30	1.30	1.30	1.30	1.30	1.30	1.30	1.30	1.30	1.30	1.30	1.30

Excess Waiting Time figures are based on 12 weeks data

Kilometre Performance

% Kilometres Operated



Date Range / Period	7	8	9	10	11	12	13	1	2	3	4	5	6
18/09/10 to 16/09/11	97.91	97.30	96.85	95.94	98.28	98.32	98.40	98.53	98.34	98.43	98.67	99.05	96.13
19/09/09 to 17/09/10	96.67	97.92	95.77	95.69	96.74	97.72	97.81	97.89	98.37	97.79	98.28	95.47	97.96
Min Standard	98.00	98.00	98.00	98.00	98.00	98.00	98.00	98.00	98.00	98.00	98.00	98.00	98.00

Kilometre figures are based on 4 weeks data