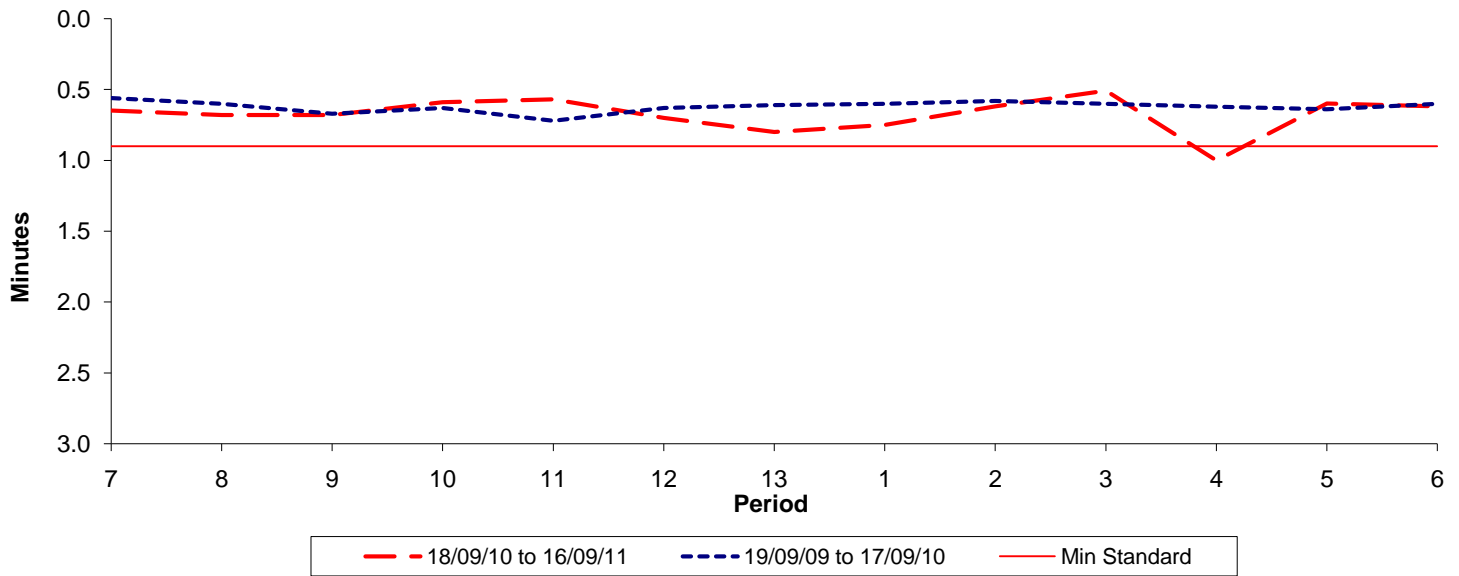




Reliability Performance (High Frequency)

Excess Waiting Time (minutes)

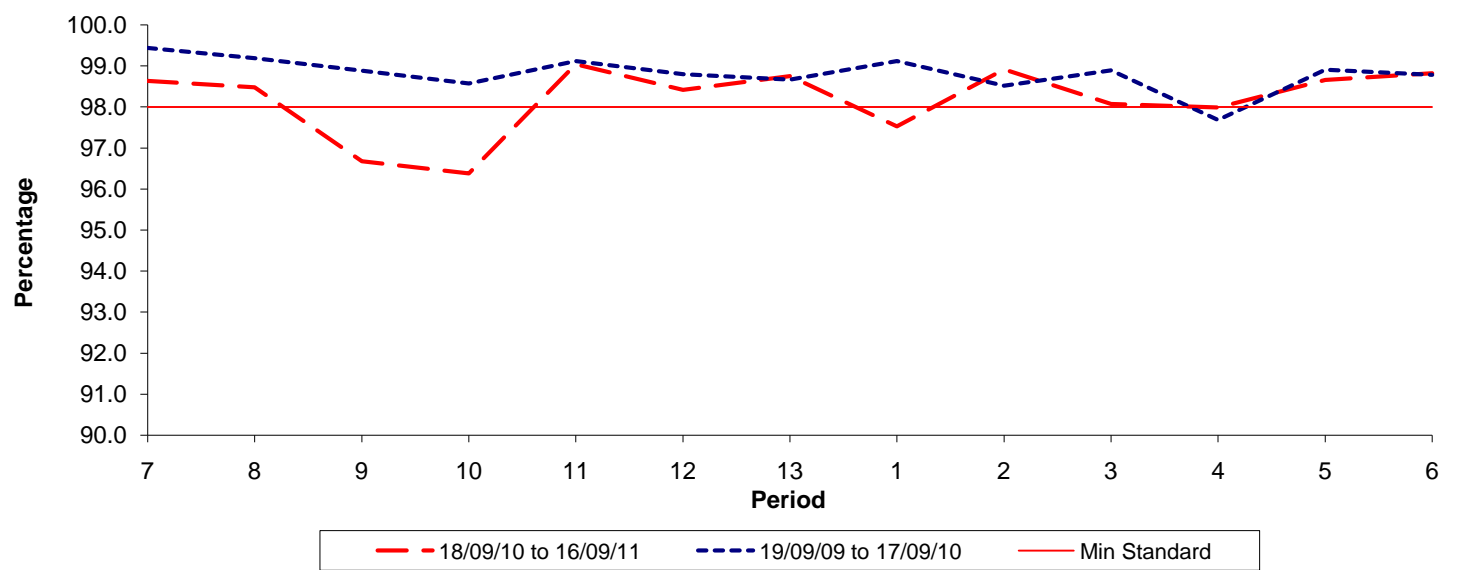


Date Range / Period	7	8	9	10	11	12	13	1	2	3	4	5	6
18/09/10 to 16/09/11	0.65	0.68	0.68	0.59	0.57	0.70	0.80	0.75	0.62	0.51	1.00	0.60	0.62
19/09/09 to 17/09/10	0.56	0.60	0.67	0.63	0.72	0.63	0.61	0.60	0.58	0.60	0.62	0.64	0.60
Min Standard	0.90	0.90	0.90	0.90	0.90	0.90	0.90	0.90	0.90	0.90	0.90	0.90	0.90

Excess Waiting Time figures are based on 12 weeks data

Kilometre Performance

% Kilometres Operated



Date Range / Period	7	8	9	10	11	12	13	1	2	3	4	5	6
18/09/10 to 16/09/11	98.64	98.48	96.68	96.38	99.04	98.42	98.75	97.53	98.92	98.07	97.99	98.66	98.82
19/09/09 to 17/09/10	99.44	99.19	98.88	98.58	99.12	98.80	98.67	99.12	98.52	98.89	97.69	98.91	98.78
Min Standard	98.00	98.00	98.00	98.00	98.00	98.00	98.00	98.00	98.00	98.00	98.00	98.00	98.00

Kilometre figures are based on 4 weeks data