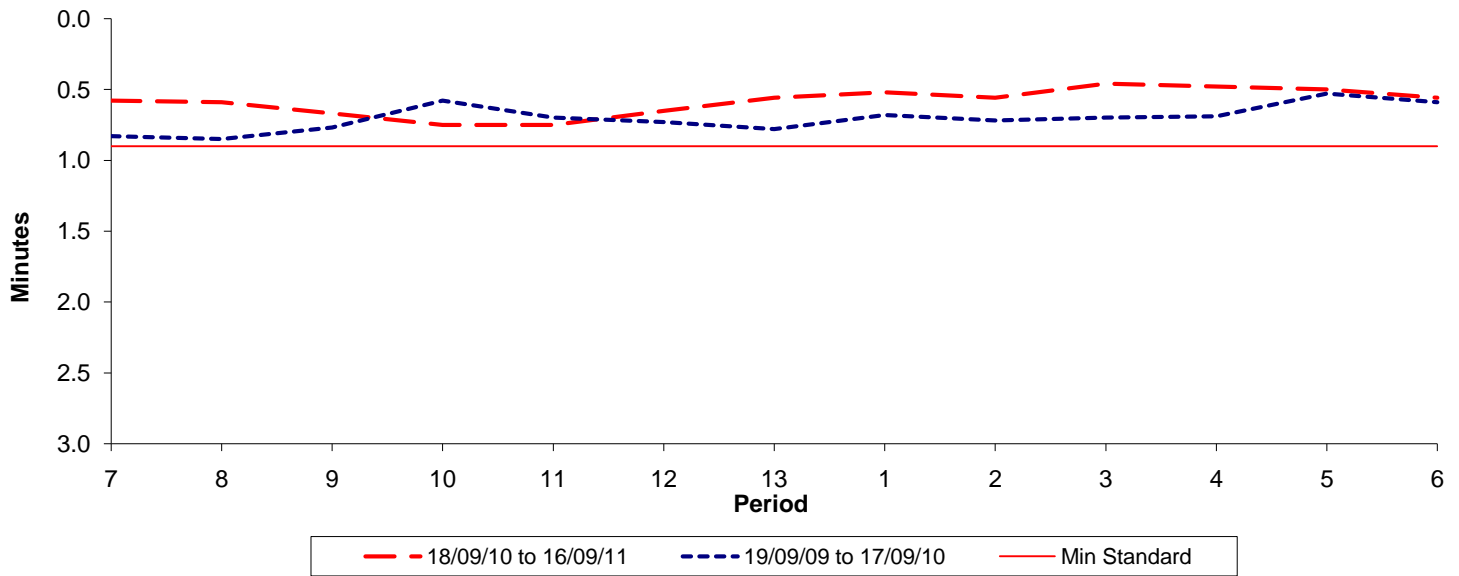




Reliability Performance (High Frequency)

Excess Waiting Time (minutes)

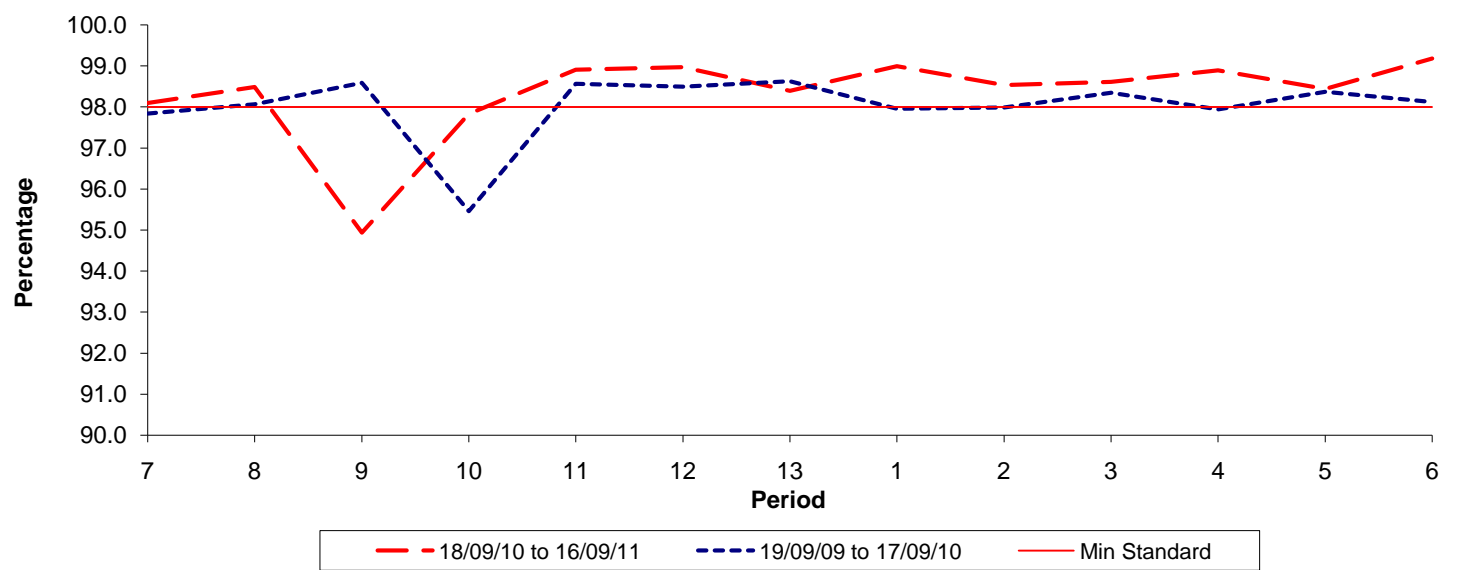


Date Range / Period	7	8	9	10	11	12	13	1	2	3	4	5	6
18/09/10 to 16/09/11	0.58	0.59	0.67	0.75	0.75	0.65	0.56	0.52	0.56	0.46	0.48	0.50	0.56
19/09/09 to 17/09/10	0.83	0.85	0.77	0.58	0.70	0.73	0.78	0.68	0.72	0.70	0.69	0.53	0.59
Min Standard	0.90	0.90	0.90	0.90	0.90	0.90	0.90	0.90	0.90	0.90	0.90	0.90	0.90

Excess Waiting Time figures are based on 12 weeks data

Kilometre Performance

% Kilometres Operated



Date Range / Period	7	8	9	10	11	12	13	1	2	3	4	5	6
18/09/10 to 16/09/11	98.10	98.49	94.94	97.83	98.91	98.97	98.39	98.99	98.53	98.61	98.89	98.44	99.18
19/09/09 to 17/09/10	97.84	98.07	98.59	95.46	98.57	98.50	98.63	97.96	97.99	98.35	97.94	98.37	98.12
Min Standard	98.00	98.00	98.00	98.00	98.00	98.00	98.00	98.00	98.00	98.00	98.00	98.00	98.00

Kilometre figures are based on 4 weeks data