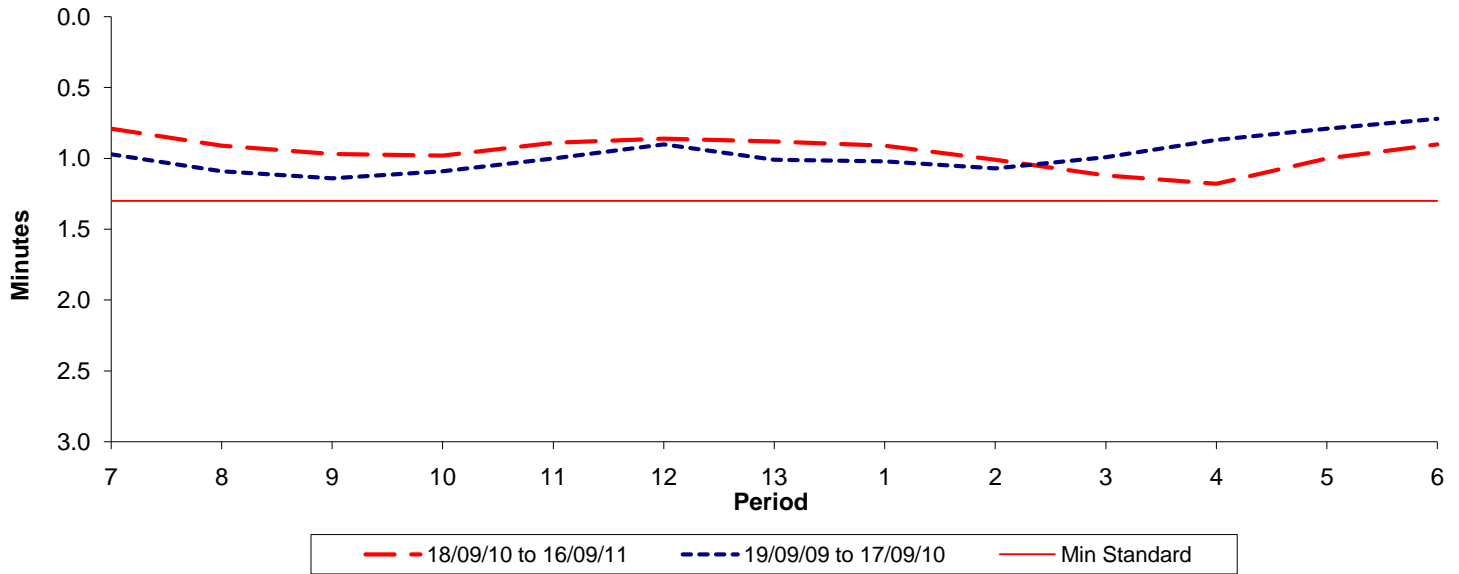




Reliability Performance (High Frequency)

Excess Waiting Time (minutes)

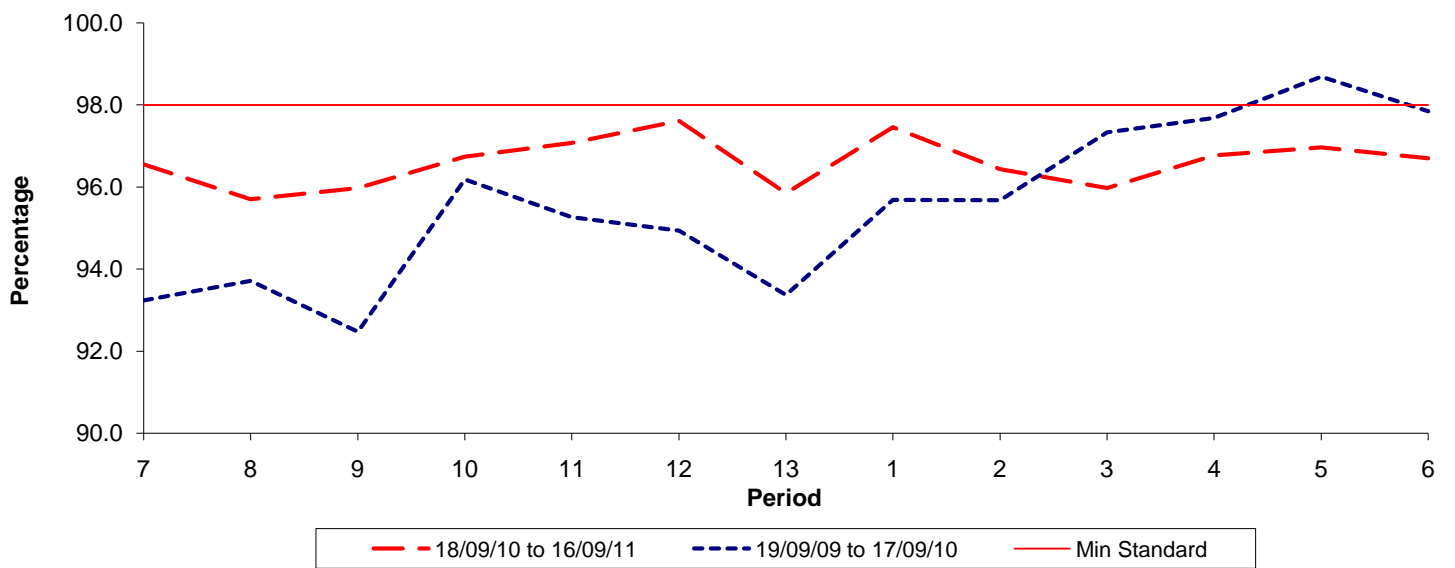


Date Range / Period	7	8	9	10	11	12	13	1	2	3	4	5	6
18/09/10 to 16/09/11	0.79	0.91	0.97	0.98	0.89	0.86	0.88	0.91	1.01	1.12	1.18	1.00	0.90
19/09/09 to 17/09/10	0.97	1.09	1.14	1.09	1.00	0.90	1.01	1.02	1.07	0.99	0.87	0.79	0.72
Min Standard	1.30	1.30	1.30	1.30	1.30	1.30	1.30	1.30	1.30	1.30	1.30	1.30	1.30

Excess Waiting Time figures are based on 12 weeks data

Kilometre Performance

% Kilometres Operated



Date Range / Period	7	8	9	10	11	12	13	1	2	3	4	5	6
18/09/10 to 16/09/11	96.55	95.70	95.98	96.74	97.08	97.61	95.85	97.46	96.44	95.98	96.77	96.97	96.70
19/09/09 to 17/09/10	93.24	93.71	92.47	96.19	95.26	94.94	93.37	95.69	95.68	97.34	97.69	98.69	97.85
Min Standard	98.00	98.00	98.00	98.00	98.00	98.00	98.00	98.00	98.00	98.00	98.00	98.00	98.00

Kilometre figures are based on 4 weeks data