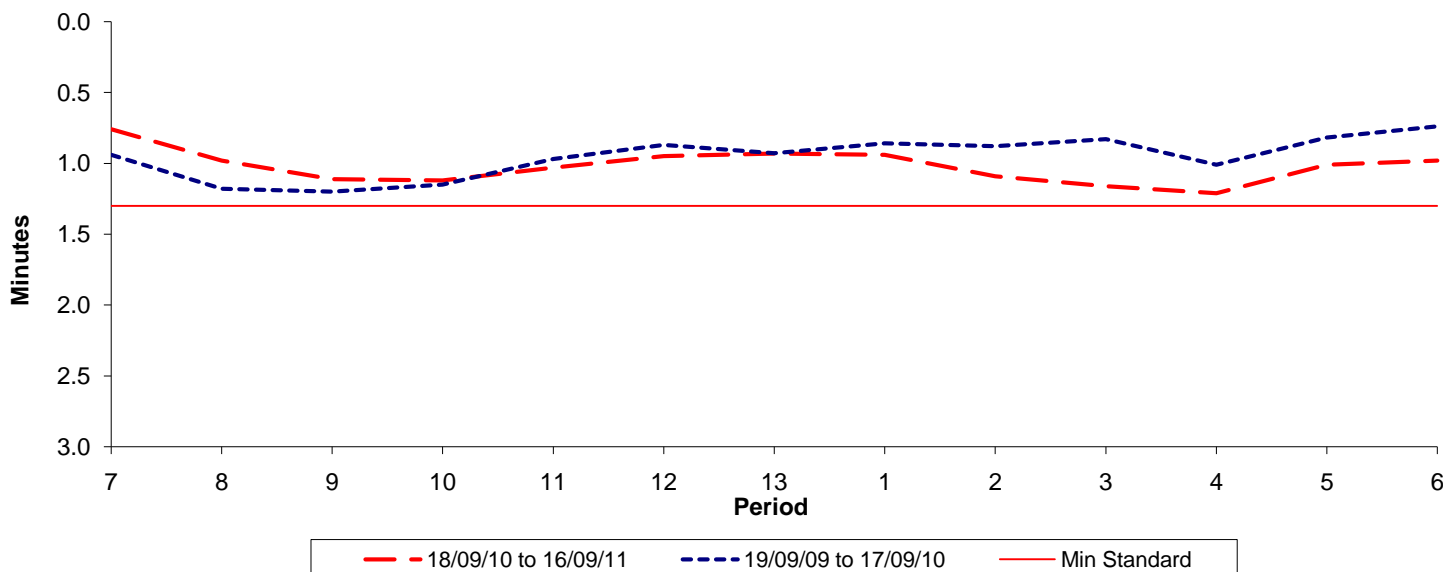




Reliability Performance (High Frequency)

Excess Waiting Time (minutes)

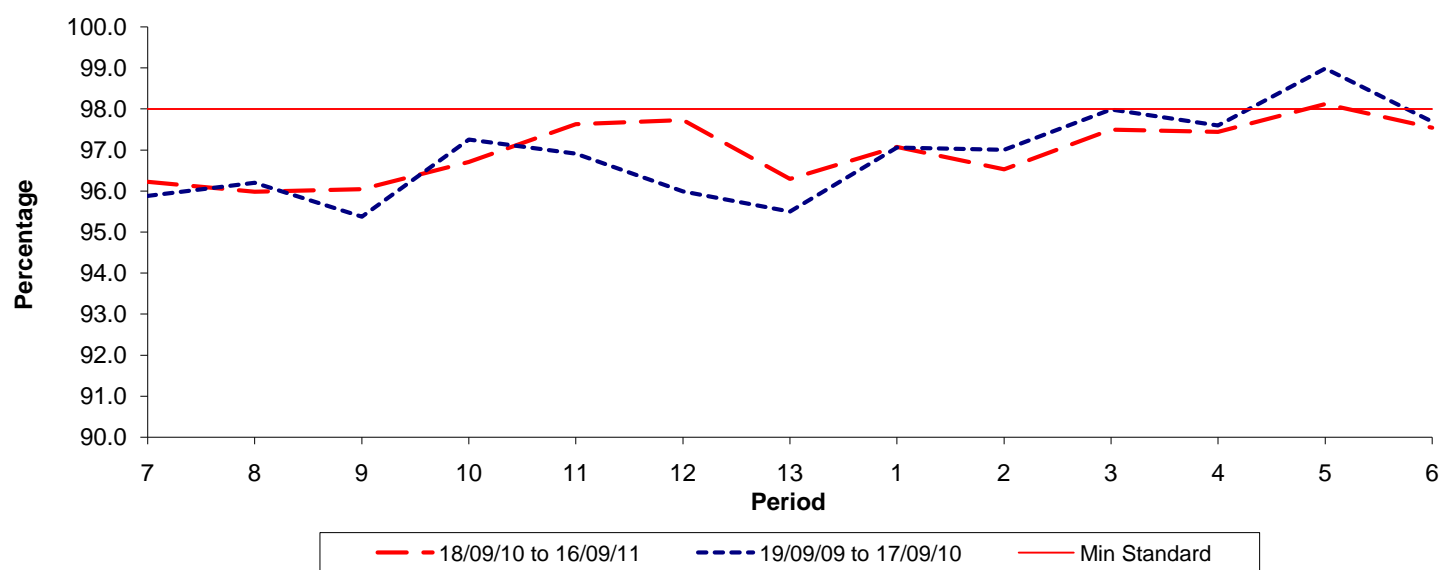


Date Range / Period	7	8	9	10	11	12	13	1	2	3	4	5	6
18/09/10 to 16/09/11	0.76	0.98	1.11	1.12	1.03	0.95	0.93	0.94	1.09	1.16	1.21	1.01	0.98
19/09/09 to 17/09/10	0.94	1.18	1.20	1.15	0.97	0.87	0.93	0.86	0.88	0.83	1.01	0.82	0.74
Min Standard	1.30	1.30	1.30	1.30	1.30	1.30	1.30	1.30	1.30	1.30	1.30	1.30	1.30

Excess Waiting Time figures are based on 12 weeks data

Kilometre Performance

% Kilometres Operated



Date Range / Period	7	8	9	10	11	12	13	1	2	3	4	5	6
18/09/10 to 16/09/11	96.23	95.99	96.05	96.71	97.63	97.73	96.30	97.08	96.53	97.50	97.44	98.12	97.54
19/09/09 to 17/09/10	95.88	96.20	95.37	97.26	96.91	95.99	95.49	97.06	97.00	97.98	97.60	98.99	97.69
Min Standard	98.00	98.00	98.00	98.00	98.00	98.00	98.00	98.00	98.00	98.00	98.00	98.00	98.00

Kilometre figures are based on 4 weeks data