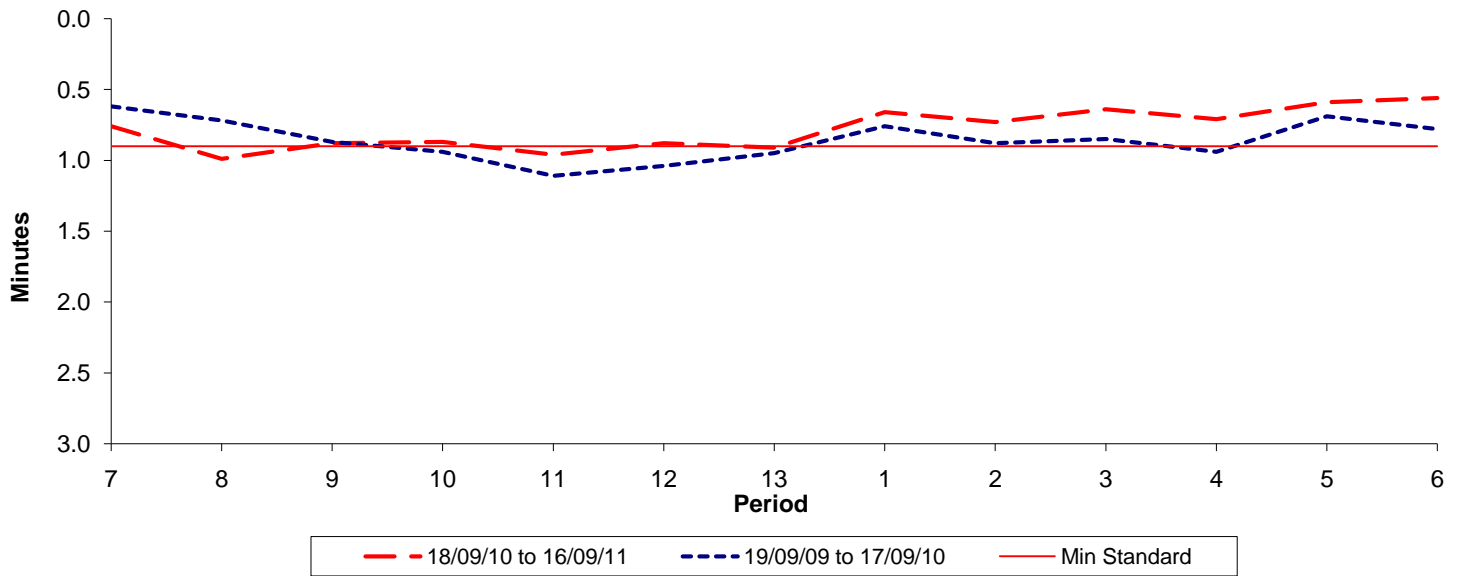




Reliability Performance (High Frequency)

Excess Waiting Time (minutes)

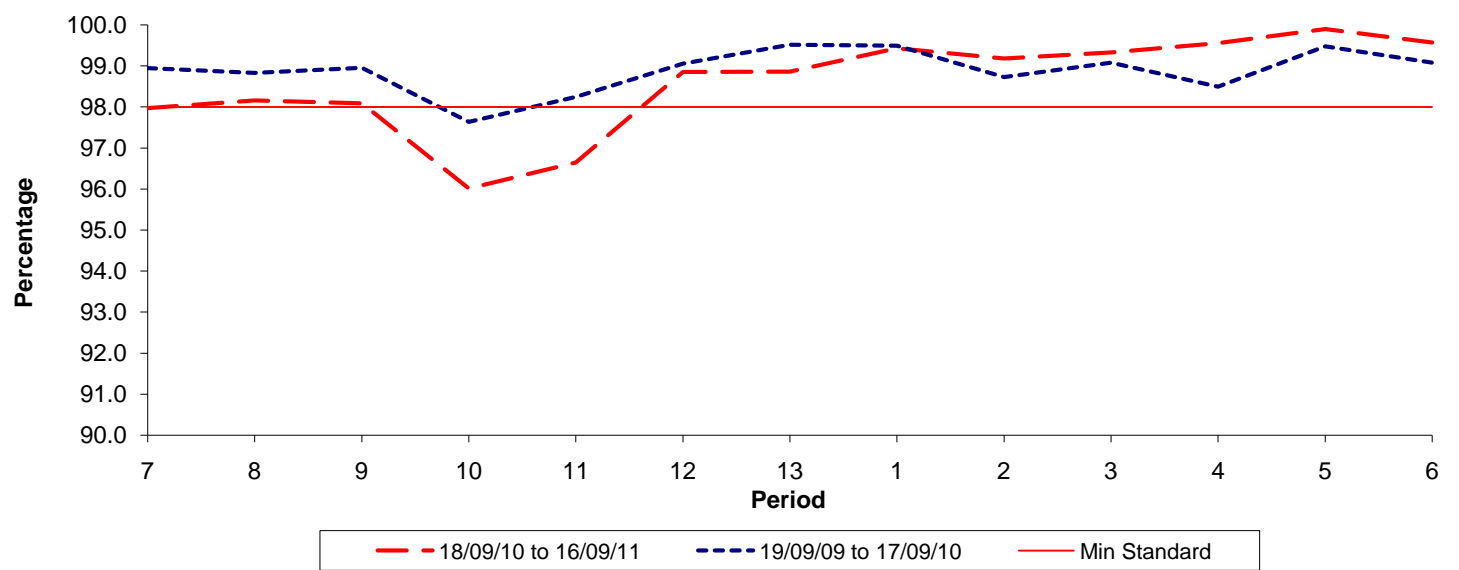


Date Range / Period	7	8	9	10	11	12	13	1	2	3	4	5	6
18/09/10 to 16/09/11	0.76	0.99	0.88	0.87	0.96	0.88	0.91	0.66	0.73	0.64	0.71	0.59	0.56
19/09/09 to 17/09/10	0.62	0.72	0.87	0.94	1.11	1.04	0.95	0.76	0.88	0.85	0.94	0.69	0.78
Min Standard	0.90	0.90	0.90	0.90	0.90	0.90	0.90	0.90	0.90	0.90	0.90	0.90	0.90

Excess Waiting Time figures are based on 12 weeks data

Kilometre Performance

% Kilometres Operated



Date Range / Period	7	8	9	10	11	12	13	1	2	3	4	5	6
18/09/10 to 16/09/11	97.97	98.16	98.09	96.01	96.64	98.85	98.86	99.43	99.18	99.33	99.56	99.90	99.57
19/09/09 to 17/09/10	98.95	98.83	98.96	97.64	98.25	99.06	99.52	99.50	98.73	99.08	98.50	99.48	99.08
Min Standard	98.00	98.00	98.00	98.00	98.00	98.00	98.00	98.00	98.00	98.00	98.00	98.00	98.00

Kilometre figures are based on 4 weeks data