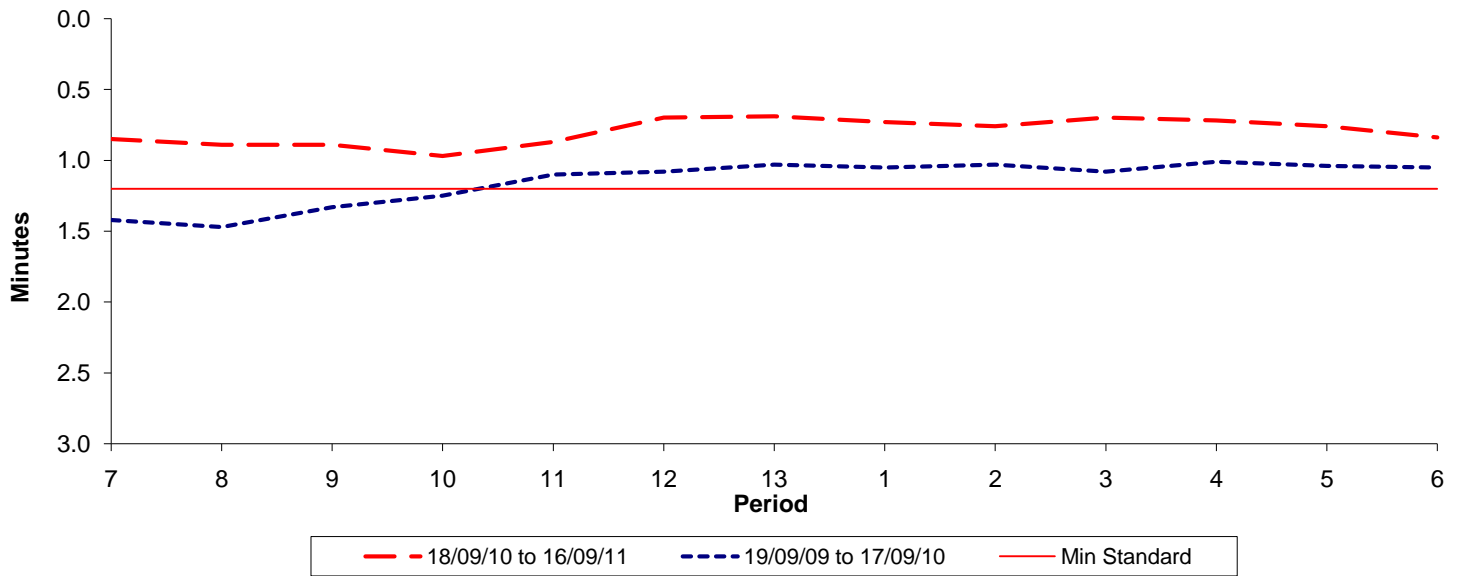




**Reliability Performance ( High Frequency )**

**Excess Waiting Time (minutes)**

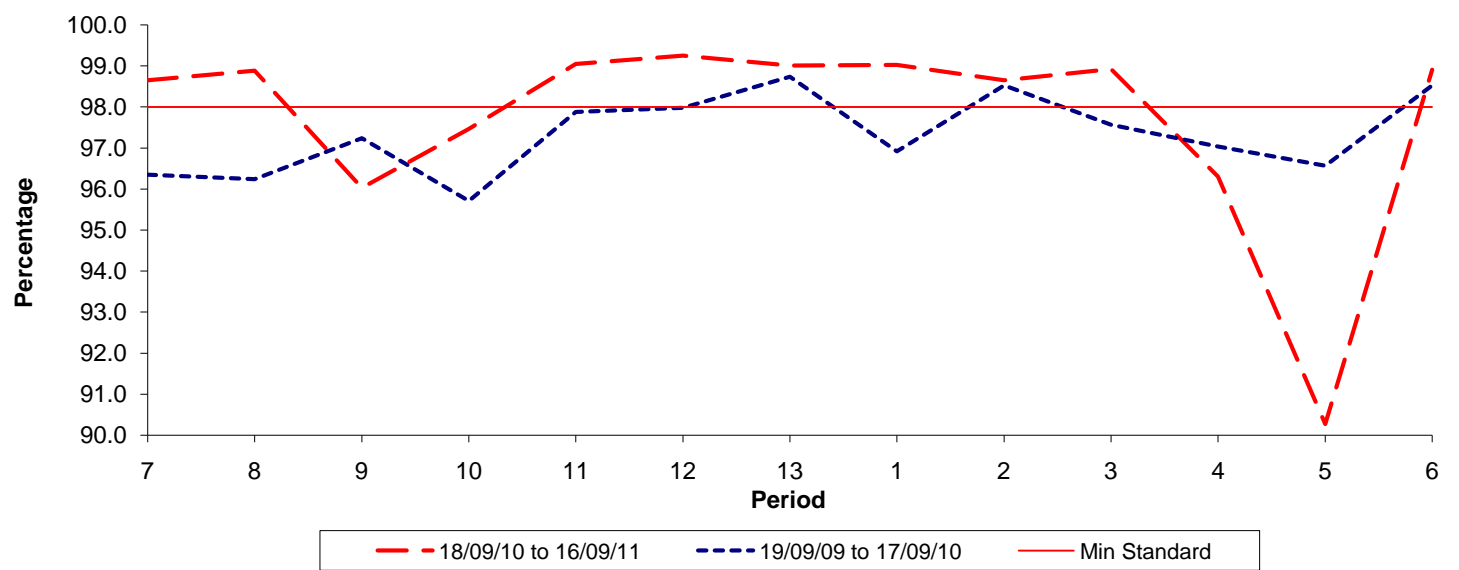


Date Range / Period	7	8	9	10	11	12	13	1	2	3	4	5	6
18/09/10 to 16/09/11	0.85	0.89	0.89	0.97	0.87	0.70	0.69	0.73	0.76	0.70	0.72	0.76	0.84
19/09/09 to 17/09/10	1.42	1.47	1.33	1.25	1.10	1.08	1.03	1.05	1.03	1.08	1.01	1.04	1.05
Min Standard	1.20	1.20	1.20	1.20	1.20	1.20	1.20	1.20	1.20	1.20	1.20	1.20	1.20

Excess Waiting Time figures are based on 12 weeks data

**Kilometre Performance**

**% Kilometres Operated**



Date Range / Period	7	8	9	10	11	12	13	1	2	3	4	5	6
18/09/10 to 16/09/11	98.65	98.88	96.03	97.46	99.05	99.25	99.01	99.02	98.65	98.92	96.30	90.27	98.91
19/09/09 to 17/09/10	96.35	96.24	97.24	95.71	97.88	97.98	98.74	96.92	98.53	97.57	97.04	96.57	98.53
Min Standard	98.00	98.00	98.00	98.00	98.00	98.00	98.00	98.00	98.00	98.00	98.00	98.00	98.00

Kilometre figures are based on 4 weeks data