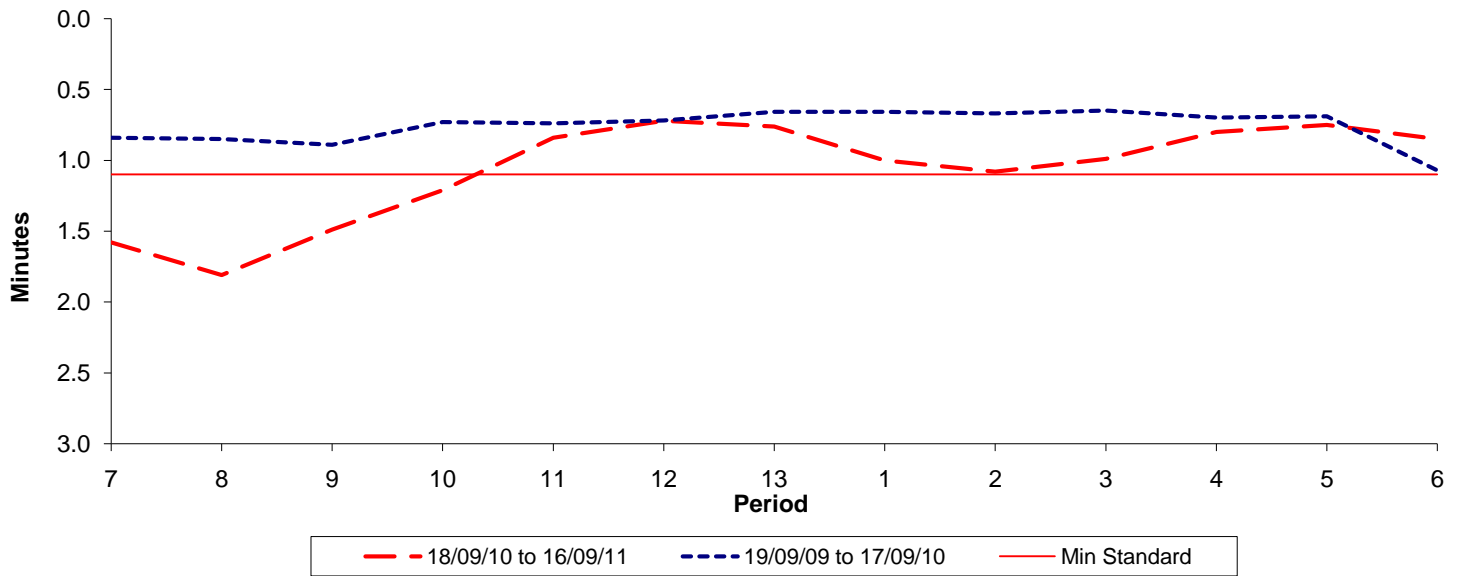




Reliability Performance (High Frequency)

Excess Waiting Time (minutes)

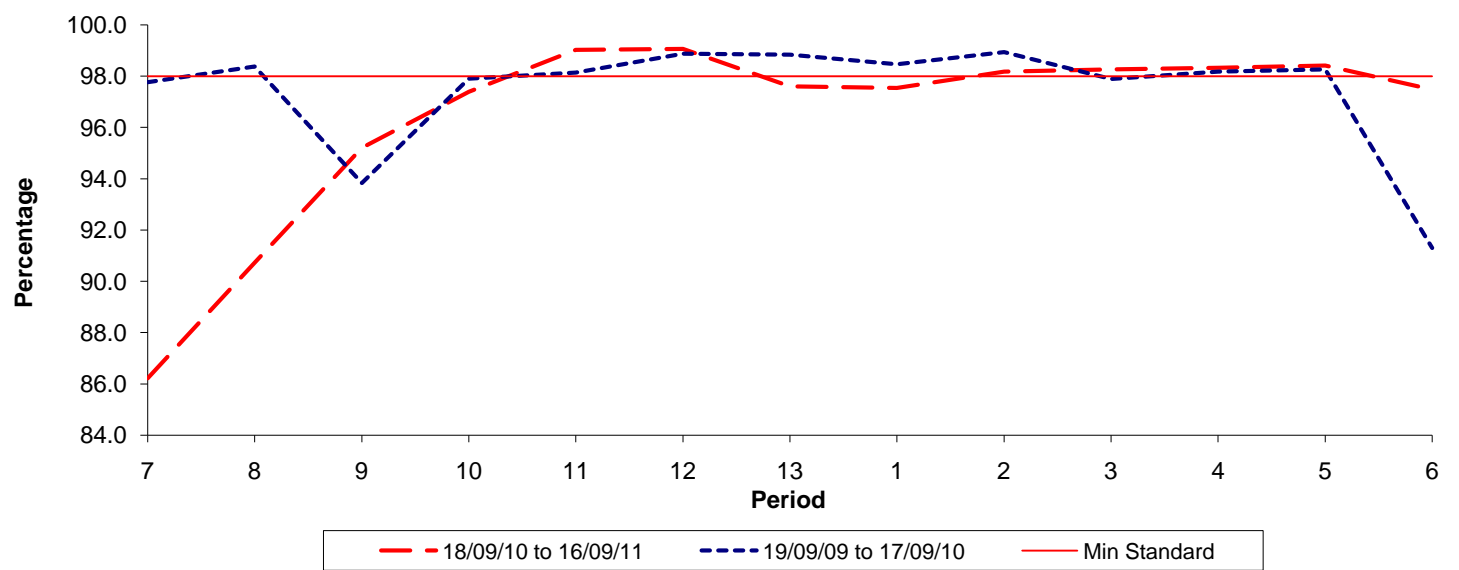


Date Range / Period	7	8	9	10	11	12	13	1	2	3	4	5	6
18/09/10 to 16/09/11	1.58	1.81	1.49	1.21	0.84	0.72	0.76	1.00	1.08	0.99	0.80	0.75	0.85
19/09/09 to 17/09/10	0.84	0.85	0.89	0.73	0.74	0.72	0.66	0.66	0.67	0.65	0.70	0.69	1.07
Min Standard	1.10	1.10	1.10	1.10	1.10	1.10	1.10	1.10	1.10	1.10	1.10	1.10	1.10

Excess Waiting Time figures are based on 12 weeks data

Kilometre Performance

% Kilometres Operated



Date Range / Period	7	8	9	10	11	12	13	1	2	3	4	5	6
18/09/10 to 16/09/11	86.22	90.73	95.20	97.39	99.02	99.06	97.60	97.54	98.17	98.26	98.33	98.41	97.48
19/09/09 to 17/09/10	97.77	98.38	93.84	97.90	98.14	98.88	98.84	98.47	98.94	97.89	98.18	98.26	91.30
Min Standard	98.00	98.00	98.00	98.00	98.00	98.00	98.00	98.00	98.00	98.00	98.00	98.00	98.00

Kilometre figures are based on 4 weeks data